

JOURNAL OF THE AUSTRALIAN  
**LOWLINE**  
CATTLE ASSOCIATION

ISSUE NO.23  
FEBRUARY 2011

**Why Lowlines are  
on the move**



LOWLINE



# Pocket rockets: Lowlines are ready for take-off

**C**HARLES Dickens begins his *Tale of Two Cities* with these words: "It was the best of times; it was the worst of times". I am sure farmers in Australia can identify with these words.

While those in the eastern states are revelling in the green grass from the best rains in many decades, others are now suffering widespread flooding. Western Australia is still in the grip of drought. This is the challenge of farming.

For the Lowline breed, 2010 has been a busy and successful year. The Feature Breed Show in Sydney in April was a resounding success on many levels.

Members were buoyant, the public was impressed and exhibitors from other breeds took particular notice. No longer is our breed to be dismissed as just 'little black cattle' but now they are seen as black pocket rockets taking off in the beef industry.

Recent carcass results confirm our breed really has something to offer the commercial beef industry. People are taking a second look at our breed's potential as a commercial animal.

When a Lowline-cross steer can take out the champion led steer title at Brisbane Show, in the state with the largest beef industry in Australia, how can our value be questioned?

Our breed has won champion carcass awards at the Ekka and at the Warwick Carcass Competition for the past three consecutive years, and now we have won on the hoof as well.

In Victoria, Lowlines have been punching above their weight in steer competitions, where some of our Lowline animals, raised entirely on grass, have taken out first prizes.

I would like to encourage members to prepare steers for competition. It may seem a bit daunting at first, trying to get the feeding



President Lee Labrie.

When a Lowline-cross steer can take out the champion led steer title at Brisbane Show, in the state with the largest beef industry in Australia, how can our value be questioned?

right and ensuring the fat cover is ideal and they meet specifications, but there is always advice available from our promotion groups and other breeders. As the famous advertisement for running shoes says: "Just do it!"

There have been some administrative changes this year. David McDonald has moved on after 12 years as our executive officer and we thank him for his guidance over that period.

Heading our secretariat is Becky Horwood, a young graduate eager to work with us

to meet our future challenges.

We have also farewelled a longstanding councillor from New Zealand, Sally Yearbury. We thank her for her work and the benefit of her wise advice.

A new councillor from New Zealand, Philip Worthington, has come on board and we look forward to his contribution.

One of the most exciting developments this year has been the creation of the Member Education and Youth Development Committee. This group is overseeing the provision of information and education services for all members.

In early 2011, the eagerly awaited elections for a Youth Council will take place, giving our younger members a forum to voice their ideas.

Finally, I would like to thank members who work to promote the breed, whether it is as part of promotion group activities or by showing our breed at agricultural field days, or local or royal shows. You are the face of our breed.

On a more serious note, I must remind members that when they exhibit Australian Lowline cattle, they are not only representing their own stud, but our breed as a whole. It is a great responsibility.

Therefore, it is of utmost importance that show society regulations are strictly adhered to.

Any serious infringement of the show society rules brings our whole breed into disrepute and jeopardises the hard work of our members over nearly 20 years.

ALCA will never condone any actions of this kind and will take action to maintain our breed's high reputation.



# Get to know ALCA Council

The ALCA Council exists to represent the interests of members. Your council is there to work for you and the advancement of the Lowline breed. Here are some of the councillors you will see more of in 2011:

## David's southern outpost

DAVID ALLEN  
M: 0417 354 405  
E: dp\_park@hotmail.com



WITH his wife Pamela and daughter Kasey, David Allen runs DP Park Lowline Stud, located in southwest Victoria at Newfield, about 15 minutes from the spectacular 12 Apostles on the Great Ocean Road. The Allens have been involved with Lowlines since 2003. They currently run 53 head but have plans to increase the herd size to 100. The Allens recently entered their first carcase competition (see story page 26) with resounding success.

"I would encourage all members to become involved with these types of competitions," David says. "Our success in this one competition has opened numerous doors for us to sell our Lowlines. I would like to encourage all members to become more actively involved with the ALCA council. Council needs to hear members' ideas and any issues or concerns they might have."

David is currently working on his sister-in-law's dairy farm. They run approximately 280 milkers with approximately another 100 calf replacements in the works.

## Sue South Australian

SUE FOUREUR  
M: 0407 251 041  
E: psfourer@internode.on.net



SUE Foureur is the only South Australian representative on council. With a background in administration, Sue runs the farm business with husband Peter on 32 hectares in the south east of South Australia, running 20 breeding females with calves at foot and seven maiden heifers. They also run a small Red Angus Stud and a commercial Black Angus herd, with about 70 head.

Sue is treasurer of the SA Promotion Group, which she has

been involved in since its inception in 2003. She is also president of the South East Cattle Handlers Association, secretary on the Beef Cattle Committee of the Mt Gambier A&H Society; and a fire fighter of 12 years with the Country Fire Service.

2011 will mark Sue's fifth year on council. This year she will chair the communications committee. If members have anything to communicate via the website or newsletters then Sue is on hand to help and advise, along with committee members Philip Worthington from New Zealand and Dave Allen from Victoria. Sue urges members to "log in".

## Philip's history of success

PHILIP WORTHINGTON  
E: woolstone@scorch.co.nz



PHILIP and his wife Kay farm a 100-hectare, partly irrigated property 40 kilometres northwest of Christchurch, in New Zealand's South Island. They run angora goats and cattle, as well as growing small seeds for export.

Their Woolstone Park Lowline Stud was established 12 years ago and has won the RAS gold medal for supreme champion lowline at New Zealand's Royal Show on five occasions – 2002, 2006, 2007,

2008, and 2009 – each with a different animal. Since 2000, Woolstone has won 40 broad ribbons for champion or reserve champion Lowline at various shows. Today Woolstone is the second biggest Lowline stud in New Zealand.

Woolstone has an equally impressive record with goats, having won RAS gold medals for angora animals and mohair fleece.

Philip has been on the Northern Agricultural and Pastoral Association committee for 15 years and is also on the cattle committee for Canterbury A&P Association.

## Cow and heifer gave Paul a humble beginning

PAUL PHILLIPS  
M: 0400 701 125  
E: paulphillips@iprimus.com.au

THE decision to buy a cow and a heifer from Tammy Breuer at Allambie Stud, Dubbo, in 2007 started Paul Phillips' association with Lowline breed. Not long after, Paul bought Salisbury Park, a 12 hectare property at the top of

the Great Dividing Range about an hour west of Goulburn. "Since then I have gotten very involved in the breed. I have been showing my cattle in NSW, ACT, Queensland and Victoria," Paul says. "This I found was a great way to learn a lot in a short period from some of the best in the breed. Taking cattle all the way to Rockhampton for Beef Australia

2009 was especially a great experience."

In 2009 Paul was voted the NSW Promotion Group president, coinciding with his elevation onto the ALCA council. "Although I've not been in the cattle industry for long, I'm not a stranger to committees and councils. I spent 15 years in Surf Life Saving

in NSW, 12 of those on committees and eight of those on executive holding all positions from club captain to vice president," Paul says. "Also in 2009 I joined the 2010 feature breed organising committee for the Sydney Royal Show. I ran the promotional side of our display with the full runnings on the trade site as well as all show merchandise.

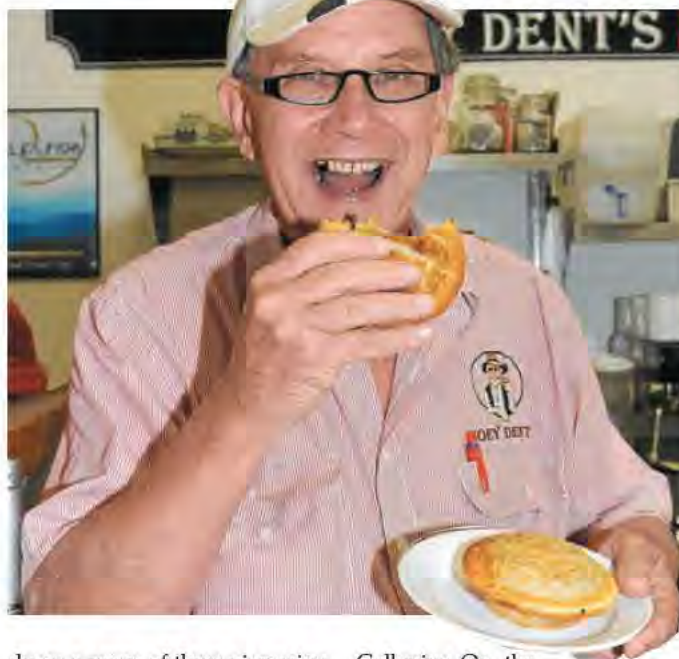


# The perfect taste

**C**LIVE Cornish looks for one main characteristic in beef – tenderness. And he believes he has found it in Lowline beef.

The owner of Joey Dent's Pi Bar at Toowoomba, in southern Queensland, Clive has been using Lowline beef in his pies for the past six months. "It's nice tender beef," Clive said. "It is perfect for the purpose that we want in making our pies." The former Angus breeder has always had an interest in Lowline cattle, Australia's own breed of cattle.

"I've always been a fan of black cattle and really like the Lowlines because they are small," Clive said. "And I have always wanted to support somebody and make pies using their beef in an endeavour to promote them at the same time." Clive came across Kobbylevale Lowlines, of Jandowae, 259km west of Brisbane, at the Toowoomba Farmers Market, and saw an opportunity to do what he had wanted for some time. He pro-



duces a range of three pies using Lowline beef – a beef Wellington, mince and beef and burgundy – and hopes to expand the line. The pies are sold through his shop and also at the fortnightly markets.

Clive said the response from customers had been good. Clive is no stranger to beef, having bred cattle for 20 years and owned the

Galloping Ox, the second restaurant to be licensed in Mooloolaba in the 1970s.

He cut all the meat that went through the restaurant to ensure his customers "got the best deal", and believes Lowline beef gives his pies what consumers want – a tender, nice flavoured beef. –

Story: LEA COGHILAN. Picture: SARAH COULTON.

## Promotional group reports:

### Lowline Plus

IT has been nice to see an increased growth in our breed with so many new Queensland members. We encourage all new members to come along to one of our days and meet some fellow breeders.

**Sydney Show:** Lowline Plus was able to support its members financially by subsidising transport costs to those who exhibited in Sydney.

**Brisbane Show:** What a fantastic showing this year with three Queensland studs successful in the hoof and hook section.

Winning grand champion led steer as exhibited by the Riehls and Pittsworth State School was an incredible achievement and something all Lowline breeders will benefit from. Without the schools' involvement this win would never have occurred, so it reiterates the benefit of school membership.

**Youth:** Now in its fourth year, as part of the Toowoomba Ag show, we provide funding for a Queensland Lowline youth member to

■ To next page



## URILA LOWLINES

### WINNING GENETICS

*Breeding Quality Recognised at Royal Shows,  
by Sales to Breeders & to other Markets*

*Bulls, Cows, Heifers, Semen for Sale*



**Urila Claudius**  
Supreme Champion Sydney



**Urila Delight**  
Junior & Interbreed Champion Melbourne

15/04/27/5

Bill & Hilery Belton  
3 Yal Yal Rd  
Merricks Vic 3916

0411 127 686  
lowlines@beltons.com.au  
www.urila-lowlines.com.au



Lowline Plus

From previous page travel to New Zealand as an associate judge for the Canterbury Show in Christchurch. The winner is billeted with New Zealand Lowline members. This year's prize recipient was Justin Yarrow from the Pittsworth State High School. It is a wonderful opportunity for Justin to travel overseas, be an ambassador for the Australian Lowline Association and experience judging at an international show. Tammy Riehl was a previous winner and her continued involvement with the Lowline breed led to the Royal Brisbane grand champion led steer this year.

Small Breeds Triple Crown: A unique event with points accumulated over three shows (Brookfield, Woodford and Samford) to promote the small

breeds and increase the numbers. The was \$500 prizemoney for supreme champions awarded.

Big Plans For 2011: June 10-11: Toogoolawah Show - Lowline Feature Breed. June-August: Small Breeds Triple Crown. July: Regional Flavours - more than 80 producers promoting produce for SE Queensland. Lowline Plus plans to be there promoting Lowline Angus Beef. November: Small Breeds Field Day at Eumundi - a new location for 2011 with plenty of beef promotion happening, plus even a small breeds show.

Chairwoman: Margo Hayes; Secretary: Susan Rodger; Treasurer: Marg Witherspoon.

New South Wales

2010 was a busy and productive year for our members. We started off with a great event at Canberra

Royal Show in February - a lot of old faces but many new ones as well. Many of us used this as a practice run for the then upcoming Sydney Royal Feature in April. With many of our members involved one way or another in the organisational side of Sydney Royal 2010, and as the host promotion group, we knew we were going to be a very busy bunch of people. Before we knew it, April had descended upon us and Sydney Royal was looming. It really was a fantastic experience to be part of and catch up with old friends and make many new ones. A big thank you to all those involved - from promotion to sponsorship, from dinner organisers to exhibitors - it really would not have been the same without you. We also had a great number of members represent the group at various shows right across NSW and at field days as well. We had a promotion site at Mudgee Field Day for the first

time since the Southern Promotion Group and Hunter Valley Promotion Group amalgamated. We also had promotion sites at both the Murrumbateman Field Day and Farming Small Areas Expo at Clarendon, which received great attention and inquiries. NSW Promotion Group has had a very busy and successful 2010. We look forward to a highly anticipated and productive 2011. - LANA KUIPERS, secretary.

North Island, NZ

THE highlight for many North Island members in 2010 was the Sydney Show. The ability to see a large number of Lowline animals in one place has enthused those members and strengthened their belief in the breed. Now to transplanting that positivity and breed recognition to New Zealand.

To next page

**KOBBLEVALE**  
**Most Successful**  
**Exhibitor**  
**EKKA 2010**

**“Looking Forward, Looking Back”**

Our new Herd sire, combined with our great females will produce continued success in the show ring and in our commercial beef operation.

Using Foundation Trangie genetics to steer us into the future.

**Yippee weighed 815 kg mature weight, 124cm at the hip.**

**KOBBLEVALE LOWLINES**  
[www.kobblevalelowlines.com](http://www.kobblevalelowlines.com)  
 Phil LaBrie  
 Ph (07) 4668 5852  
[kobblevale@wideband.net.au](mailto:kobblevale@wideband.net.au)  
 'Fairymount'  
 Jandowae, Queensland

**Kobblevale Skye Senior, Grand & Interbreed Champion and Kobblevale Trenah, Junior Champion**

**Loc-Hi Yippee AI-AY**

LangYard Designs



## North Island, NZ

■ From previous page

We are a small group spread over a large area with diverse needs and aspirations for our animals. We have met twice this year to share experience and information about the breed. In 2011 we will be holding a 'field day' in March to provide a more hands-on opportunity. The Kumeu Show in March continued to be the main venue for breeders to show Lowlines. Most shows are reporting a general decline in the numbers of all animals entered. The Hawkes Bay Show did not have sheep entries for the first time in its history and cattle numbers are a mere shadow of what they were just 10 years ago. Members have expressed interest in the FutureBeef Competition held in Fielding in May each year.

Beef and Lamb New Zealand run the Steak of Origin competition which has attracted a great deal of media attention. It won't be long before we see Lowline genetics winning this event I'll wager. Robert Baird from Tartan Farms has built a loyal following for his 'Lowline infused' meat products that he sells at farmers markets from his purpose-built 'meat mobile'. Well done, Robert.

This year, our North Island promotion officer Sally Yearbury did not seek re-election to the ALCA Council. Sally has given generously of time and energy to further the breed's governance and we are very appreciative. The North Island group looks forward to an even more successful 2011. – CLINT DECKARD, *chairman*.

## South Island, NZ

It has been a sad and testing time for the South Island in recent months. Only yesterday we paid tribute to the 29 miners of the Pike River Coal Mine in Greymouth who sadly lost their lives. And on September 4

another day to affect us all was the massive 7.1 earthquake that struck near Christchurch.

Our promotion group has again been actively showing animals around various A & P Shows with great success. Some of these include Ellesmere, Rangiora, Oxford and of course Canterbury. This year at Canterbury it was the first time a "Beef Youth Show" was held. An "Inter-School Junior Beef Herdsperson & Paraders Competition" was run in conjunction with the existing "Herdsperson Competition". This competition was set up for exhibitors to adopt a school to help handle their cattle at the Canterbury A & P Show and in return the school members learnt showmanship and also had the opportunity to enter the Beef Herdsperson Competition and the Inter-School Competition.

Kay and Phil Worthington of Woolstone Park Lowlines adopted eight students to make up two teams from Rangiora High School, and against two other schools took out first and second place. Well done.

This year Justin Yarrow from Pittsworth State High School, Queensland, was our associate judge at the Canterbury Show. Justin was sponsored by the Queensland Lowline Plus Group and he was kindly billeted by Kay and Phil Worthington.

We congratulate Philip Worthington on his appointment as ALCA councillor. Phil will bring his wealth of knowledge both on and off the farm and no doubt will be a great asset to the decision making of ALCA in the future. – DEBBIE GUTHRIE, *secretary*.

RIGHT: South Australia's promotional trailer means the Lowline message can be taken on the road.

## South Australia

IN South Australia things have been steady for the Promotion Group this year and we look forward to a busy 2011. We have all appreciated the widespread rains across the State, but it has been difficult with the late rain to finish off hay and crops. Even with these disappointments we dare not complain about the rain living in the driest State on the driest continent.

For me, this is the second time sitting in the president's chair. I was the inaugural president in 2001 and since then our Promotion Group has grown and we have provided numerous opportunities for our members to promote Australian Lowline Cattle throughout South Australia. Our current approach is more strategic as our group incorporates members from the Mid North, Adelaide Hills, Fleurieu and South East regions, a distance of about 1000km as the crow flies.

Due to the distance we now meet the first Sunday every three months and have concentrated on events that provide us with maximum exposure. As a Promotion Group we decided to provide financial support to any members who wished to attend the 2010 Australian Lowline Cattle Muster at the Royal Easter Show in Sydney. We recognised this as an important national event. My daughter Sarah and I flew to Sydney for the day and were delighted to see Sue Foureur, Karlee Park Stud win her class.

It was great to see one of our



members mixing it up on a big stage and letting the other states know that we can match them in the show ring in Sydney. The main events next year will commence with SA Beef Week in February at Pat Weinert's, Hazelmere Stud at Meadows.

We have decided to value-add and with Pat's permission the Promotion Group will be providing four feature sessions:

- Lowlines in the Market (Stock Agent's thoughts).
- Understanding Butchering (Master Butcher).
- Cooking the 'Perfect Steak' (Guest Chef).
- Cattle Handling/Show Preparation/Ring Craft (Promotion Group Members).

Also in February the Limestone Coast Combined Field Day will be held at the Mount Gambier Showgrounds involving 20 studs (14 breeds) including three Lowline Studs, Karlee Park, Wahroonga West and Yenolom.

In May our South East members will assist with the SE Cattle Handlers School. Most of the cattle used are Lowlines provided by Karlee Park, Wahroonga West and Yenolom Studs. Last year, 70 students attended and it was reported they were excited about working with Lowlines due to their size and temperament.

In September we have the Royal Adelaide Show and I encourage all members from South Australia and interstate to attend and compete. In previous years our colleagues from Victoria and NSW have been successful so it may be well worth the trip and we would love to see your animals in the ring.

We will then finish the year in November with a trip to Paskerville in the north of the State to attend the three-day Agricultural Field Day. – DARREN WATKINS, *chairman*.



# NZ Lowlines punch above their weight

By MALCOLM McCOSKER

**W**HEN Lowlines compete in inter-breed classes against larger cattle of several other breeds, any ribbons they score are worthy achievements indeed.

That's the challenge faced by leading New Zealand breeder Sally Yearbury of Ploughbright Stud at Cambridge, in the lush green pasture paddocks of the North Island's Waikato region.

Unlike Australia, where all Royal and most large provincial livestock shows have specific Lowline classes, Mrs Yearbury's cattle have to tread the turf in competition against larger breeds which include the European Gelbvieh.

Competition for Lowline also includes tilts at steak-of-origin events, in which the animal is slaughtered locally and its rib eye taken away for assessment in a series of edibility tests including pH, tenderness and taste. Small wonder that Sally was delighted last year to get into the final 16 in the British-cross class of 60 entries and from more than 400 hundred competition entries.

Sally and husband Noel have retired from hands-on dairying in the huge milk production region

of Cambridge, better known to Australian racing fans as the heartland of top NZ Thoroughbred breeding.

Because of the 'chocolate box' vista of lush green rye and clover pastures in region, Sally regards her main challenge with Lowlines is keeping excess condition off older cows, thus assuring their breeding efficiency.

Attracted to the idea of compact size, naturally polled, easy-to-handle beef cattle, Sally started with Lowlines 10 years ago after she saw a heifer at June McConnel's Cherry Vale Stud near Hamilton and asked if she could have first option if the heifer became available. Upon returning from an overseas trip, Sally was told that the McConnel property was sold and the heifer was available. She thus acquired Cherry Vale Ebony, which became the foundation female for her stud.

After expanding numbers Sally is now partially retired from farming, pursuing other interests, and has reduced her stud cattle numbers only keeping basically her show team, about 10 head.

These animals are based on bloodlines from Colombo Park, Elandra Park and Monte Allegro Lowline Studs acquired through semen imports.



Sally Yearbury says Lowlines are holding their own against larger breeds in New Zealand.

There is great potential here for crossbreeding over cattle that are getting too big for commercial efficiency.

"All my breeding is done with AI. I don't run a bull with my top cows and I strive to use the best genetics," Sally said.

About three years ago Sally started showing with help from her sister and fellow Lowline enthusiast Jude Flashman. "It's brilliant sister time together, two ol' girls getting out there having a ball and nowadays giving other breeds a run for their money!" Sally said. She recently paraded a young bull at Waikato Show that took second to a Hereford in a large, all-breeds bull calf class.

"We actually got loud applause from spectators, taking champion bull calf and calf of show over Gelbviehs," she said.

Thanks to her efforts and other equally determined breeders, Sally is delighted to report much better acceptance for Lowlines among other beef breeders and especially by judges, which is brilliant.

"We're being taken more seriously now. There is great potential here for crossbreeding over cattle that are getting too big for commercial efficiency," Sally said.

Sally's highlight for the year though, was with sister Jude, enjoying helping show cattle for Lynda Senger-Whitehead of Colombo Park Lowlines, Victoria, at the 2010 huge Lowline feature at Sydney Royal. It was "brilliant", Sally said.



# Lowline body in new hands

**Y**OUTHFUL enthusiasm and a blend of practical and academic skills equip Becky Horwood well for her new position as CEO of the Australian Lowline Cattle Association based at the University of New England, Armidale, NSW.

Before taking up this new post on September 30, 2010, Becky, aged 24, worked as an Inverell based research agronomist for the private fertiliser company Advance Nutrients, mainly concentrating on cotton and horticultural crops.

She held that position for a year after graduating from New England University but always wanted to go into the cattle side of rural business.

The opportunity came when former Lowline CEO David McDonald accepted another breed society post and Becky filled the job vacancy. Being from her family's mixed farming property near Inverell, she has a strong grasp of practical rural matters and with her husband Ben Horwood, she continues to run the property since her parents moved to Kalgoorlie in Western Australia.

In her new role Becky handles customer inquiries and is involved with live animal registrations as well as transfer of embryo registrations.

She is also looking forward to visiting Lowline cattle events such as the breed showing at the 2011 Sydney Royal and other major shows.

The satisfaction of seeing Lowline breed numbers grow and the association consolidate as a virile and professional body are fond memories for David McDonald,



New Lowline executive officer Becky Horwood is eager to make an impression, following in the wake of her long-serving predecessor David McDonald.

who stepped down as CEO of the Australian Lowline Cattle Association after 12 years in that post.

Mr McDonald, who has a background of commercial Shorthorn cattle production at Orange, NSW, helped to advance Lowlines through the 2000 decade and also through the worst of the drought to continue breed growth and confidence.

He said the Lowline had strengthened its role as being very much for small farms and for many people who did not have a cattle background. The breed being smaller was therefore easier and safer to handle.

Being an offshoot of the Angus breed, Lowlines also gained the

advantages of natural poll heads and high-quality meat.

Mr McDonald said his change to CEO of Shorthorn Beef was a re-allocation of duties within Australian Beef Research Institute

The Lowline has strengthened its role as being very much for small farms.

(ABRI) at the University of New England from which he would continue to operate. "It has been the role of ABRI to develop breed secretariat divisions to accommodate societies with different membership numbers, some in their hundreds and others down to about 10 members," Mr McDonald said.

"Many of these societies cannot afford to run their own offices on the scale of Angus, Brahman, Droughtmaster or Santa Gertrudis societies."

He said he wished the Lowline association every success for the future and cherished the friendships he has retained with its members, a well as wishing new CEO Becky Horwood a long and fulfilling career at the helm.

Mr McDonald and his wife Julie have four children, two recently married and two just settled into their first jobs.







Principals of Yarra Ranges Lowline Stud, John and Natarsha Canny, travelled from their Victorian base at Yea to Canada in November to attend Farmfair International at Edmonton, Alberta. Natarsha reports:

**F**ARMFAIR is Canada's premier agricultural showcase, where people from all over the world come to celebrate agriculture.

Livestock are showcased throughout the event, including more than 1000 head of cattle, hundreds of horses and many small and speciality livestock. As you can imagine western entertainment was in abundance with a western trade and gift show, the

# Lowlines' big North



Lowlines take centre stage at Farmfair in Canada.

Heritage Ranch Rodeo and the famous Canadian Finals Rodeo.

John and I were approached at the 2010 Sydney Royal Lowline

Feature Show, after our bull Yarra Ranges Jackaroo won grand champion. We were then invited to Farmfair International run by the Canadian Beef Breeds

Council. There were breeders from Mexico, USA, South America, Europe and Australia.

We landed in Edmonton on

● to p13

## Lik Lik Lowlines



**Easily Handled Small Block Beef Cattle**

"Blocker" The Grand Champion Led Steer at the 2010 Royal Queensland Show.

Grand Champion Bull @ Beef 2009,  
Lik Lik Commander-in-Chief

Grand Champion Bull @ Brisbane Royal 2008  
Lik Lik Blinky

Beast of the Show @ Laidley Show 2009  
Kobbevale Pateena and Lik Lik Excite-a-bull (calf),  
beating all Breeds.

Reserve Champion Junior Heifer @ Brisbane Royal 2009  
Lik Lik Destiny

**Contact: Jacqui & Colin Schiller**  
"Long-Arp", Cambooya, Queensland  
Ph: (07) 4634 3047 Mob: 0419 686 254  
Email: colin.schiller@bigpond.com

1543251

## Wanamara Farm

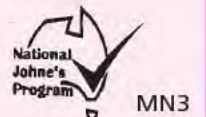
**Home of  
Wanamara Lowlines &  
Champagne Speckle Parks**



**Quality bulls, females & semen for sale**  
*Visitors always welcome*

**Julie & Greg Knight**  
Major Plains near Dookie, Vic.  
Ph. (03) 5828 6490  
Mobile: 0427 539 795

Email: wanamara@westnet.com.au  
[www.wanamaralowline.com.au](http://www.wanamaralowline.com.au)



1539125



# American future

● From p12

November 9 to a cold -3 degrees, and after a couple of hours rest at the beautiful Sutton Hotel we went straight to Farmfair to see the Australian Lowlines and meet the breeders.

There were five breeders showing cattle – Pine Ridge, Big Island, High Point, Wild Rose and Silverhills, with more than 40 head. It was quite impressive that such a small number of breeders could get such a great number of animals to the show. Everyone made us feel very welcome and we really enjoyed our time talking about our great Lowline cattle and the future of the breed.

The National Lowline Show was held on Thursday, November 11.



It really was a great spectacle with 14 classes and the animals looked fantastic out in the ring. Congratulations to Big Island

Lowlines who won grand champion female award with Alta Daisy and to High Point Lowlines who won grand champion bull

We really enjoyed our time talking about our great Lowline cattle and the future of the breed.

LEFT: Jan and Neil Effertz (left) of Loala stud, North Dakota, US with Natarsha Canny. Jan and Neil have bred with the Cannys' prized Yarra Ranges Jackaroo since he first won supreme exhibit as an 11-month-old in 2008.

with TL Lil Junior. I had a chance to catch up with the judge Elaine Hiller, a Hereford and Simmental breeder who was very impressed with the quality of the Lowline cattle. Her general comments of the breed were that they are "exceptional animals, with amazing fast growth and great feed conversion".

● To p16

# yarraranges lowline cattle stud

*The nation's benchmark*



Jackaroo will give you exceptional growth rate, length & muscle



Epiphany - Jackaroo's first calf

## Yarra Ranges Jackaroo

### Royal Sydney Show 2010

Senior & Grand Champion Bull

### American Royal Show 2010

Royal Champion Get of Sire (Sire's Progeny)

### Royal Melbourne Show 2008

Junior & Grand Champion Bull

Supreme Lowline Exhibit

Junior Interbreed Champion Bull

## Yarra Ranges Epiphany

### Royal Melbourne Show 2010

Reserve Junior Champion Female

### Jackaroo's USA progeny success

EZ Captain Jack

Grand Champion Bull IOWA State Fair & Grand Champion Bull American Royal Show

EZ Pepper Jack

Winner American Royal Show

## Bulls, Females, Semen and Embryos available for local & overseas markets

Natarsha & John Canny, Yea, Victoria, Australia

Ph: +61 3 5797 6343, or 0407 327 603. Email: natarsha@yarrarangeslowline.com.au

[www.yarrarangeslowline.com.au](http://www.yarrarangeslowline.com.au)





# Australian Lowlines mo

The Lockyer Valley's Vitulus Lowline Stud finds a niche in the Italian dairy market. Lea Coghlan reports...

**L**EADING Lowline breeder Margo Hayes has notched up another win in her bid to develop the lucrative European Union market for Australia's very own breed of cattle, Lowlines.

Earlier this year, Margo, who owns and runs Vitulus Lowline Stud in the Lockyer Valley, an hour southwest of Brisbane, dispatched embryos from her stud to Italy.

She received a personal visit from Gigi Paternieri and his son Alex, who own Italy's largest independent semen distributor, Interstate Breeders, based in Cremona.

The company markets semen from their own Holstein bulls and imports semen from the USA and Canada.

Alex stayed on for three months to learn about Lowlines at the Vitulus Stud.

Following the visit, 12 embryos and 200 hundred straws of Lowline semen were dispatched to northern Italy.

Margo said entry into the Italian market, one of the EU's largest veal producers, was a real achievement.

She said Italian beef producers were looking for genetics that would help produce quality veal and smaller beef cattle.

"There is a huge opportunity for Lowline semen to be used in the dairy industry in Italy," Margo said.

"In Italy, there are literally thousands of small dairy farms facing the same problems that Australian dairy farmers are experiencing, that being low milk prices and increasing production costs.

"Dairy farmers are looking for an efficient new option."

Margo believes the Lowline dairy cross animal could produce a wonderful product for Italy's popular veal market.

"Meat production in Italy currently accounts for around 25 percent of GDP," Margo said.

"The Italian supply of veal and meat does not cover the national demand for both products.

"The demand for veal meat in Italy is only partially covered by the country's domestic production, 67.6pc, with the remaining imported from Holland and France."

Margo said the hard work was finally paying off, with runs on the board for Vitulus Lowlines.

"It's taken a lot of time, hard work and a significant financial outlay over the past seven years but I am excited to say it's finally coming to fruition and there are exciting times ahead for the Lowline breed and the development of the EU market," Margo said.

"Vitulus is Latin for 'little calf' and so it would seem appropriate that we are finally able to export



to one of the biggest producers of little calves in the EU."

past 14 years.

Margo, a former events organiser, has been associated with Australian Lowlines for the

She moved with her husband to a 20-hectare block at Byron Bay where she started with two Lowlines.



# ake Italian impression

Coming from the land – she grew up on her family’s 2832-hectare property – Margo knew about cattle, but Lowlines were something new.

What started as a hobby has evolved into Queensland’s largest female Lowline herd, numbering 150 head.

“I love what I am doing and I love genetics,” Margo said.

Margo began developing the EU market in 2006 when she sent the first shipment of Lowline embryos to England.

A second shipment of 27 embryos were sent this year to three studs

I believe the Lowlines have a role to play in the commercial beef industry and this is evidenced by their performance in carcass competitions.

in England and one in Italy.

She has also sent two live cattle shipments to Thailand, with a third in the planning, and is discussions with the Chilean Government for a project.

Margo said the EU was a lucrative market for Australian Lowlines.

“I targeted the EU because I always thought there would be a market there. Farms are getting smaller and smaller, and the Lowys come from Angus genetics and Angus is originally from Scotland, so it’s like taking coal back to Newcastle.”

Margo, whose book *Small Cattle for Small Farmers – A Tool For Beginner Breeders and Producers* is in its second print run, said her main focus was developing the breed commercially.

“I believe the Lowlines have a

role to play in the commercial beef industry and this is evidenced by their performance in carcass competitions,” Margo said.

“They do really well as a cross-breed and have great yields. I’m currently in discussions with a wholesaler about a branded beef product.

“By developing a beef product and commercial market you have greater acceptance of the breed and use by producers.

“There is also enormous potential for new export markets for Australian Lowlines.”

## Keimoi Lowlines

### Outstanding Success for 2010

Keimoi takes out the Double at the Canberra Royal 2010



**SUPREME CHAMPION LOWLINE – Grand Champion Bull – Grand Champion Female – Reserve Junior Female Sydney Royal 2010 – Lowline Feature Breed (175 Lowline entries) – Keimoi entered 10 classes and won 9 ribbons. Including the Reserve Junior Champion Bull.**

*This demonstrates the broad and consistent quality of our genetics.*

**KeiMai**  
Established 1992  
Foundation Lowline Stud

**Moira & Keith Smith – Ph: (02) 4829 2121**  
Goulburn, NSW  
email: keimoi@wirefree.net.au • website: www.keimoilowline.com

1536625



# Mums step up for orphan



It's very difficult to tell the difference between this dam's own calf and its adopted counterpart.

**V**ICTORIAN breeder Julie Knight is thankful for the mothering ability of Lowline females. The co-principal of Wanamara Stud at Major Plains is astounded by the milking ability of a prized breeder, which has been feeding her first calf plus an adopted orphan for seven months.

The dam of the orphan, nine-year-old Bonnie Doon, died from milk fever, forcing Julie to bottle-

feed the orphaned calf. After a week she put him into a paddock with calving heifers.

"After a week or so he didn't want his feed from the bottle any more as he was feeding from at least three cows and they were all mothering him," Julie said. "When I had to split up the mob, I put the calf with Wanamara Hoodoo, who I knew had been feeding him." The orphan is now hard to pick from the calves.

## IN MEMORIAM:



**ROTHERWOOD BOXER**  
26/12/2002 – 22/3/2010

Beautiful Boxer ... the day you broke your hip you also broke our hearts. You were the heart and soul of our stud and such an enormous part of our success.

You will always live on through your beautiful progeny and our wonderful memories of you. Your favourite girl "Wish" will also

miss you as you were such great companions and had such beautiful babies together.

Boxer you were special, you are special and you will always be special. Thanks for everything Boxer boy.

– Vicki, Phil, Paul, 'Nana' and John,  
Rotherwood Lowline Stud,  
Cann River, Victoria.

# Aussie breeders made welcome by Canadian hosts

● From p 13

"In our country with such long winters it is important to have animals that can convert the feed efficiently and Lowlines can certainly do this," she said.

"I'm amazed at the ability of the females to wean a 900 pound calf," she told me. I asked Elaine what she saw as the future for Lowlines in Canada and she responded: "The smaller cuts of beef is the way of the future and with Lowlines you can finish them on grass, unlike the bigger breeds that have to be lot fed."

On Friday, Barbara and Paul Gotaas from Big Island Lowlines took us on a farm tour. We had such a wonderful day checking out some of the local scenery and of course Lowline cattle.

John and I would like to thank everyone we met while at Farmfair. It was such a great show and an incredible experience.

Big Island Lowline stud is very excited about the future of Lowlines in Canada and are doing an incredible job marketing Lowlines. They are the first to export live Lowline cattle to the UK. They shipped 10 heifers in February 2010 and are organising another shipment to leave in 2011.

We left Edmonton on the final day of Farmfair for Edam, Saskatchewan, where we visited another Lowline breeder, Cathy and Lee Monteith and their chil-

dren Melissa and James of Honeybrook Lowlines.

Cathy and Lee have just started breeding Lowlines and have bought some great females as their foundation herd. They will be the first Canadian breeders to have progeny of Yarra Ranges Jackaroo, due August 2011. We had such a great couple of days with Cathy and Lee, who opened their house to us and made us very welcome. They have promised to visit so we look forward to repaying their hospitality.

From Saskatchewan we took a quick trip to North Dakota in the US to visit Jan and Neil Effertz of Loala stud. Jan and Neil have been breeding with Yarra Ranges Jackaroo since he first won supreme exhibit as an 11-month-old in 2008. Jan and Neil

were such great hosts and it was very exciting to see some of their US progeny in the flesh. In the words of one breeder: "You can pick a Jackaroo calf out in the paddock. You don't even have to read its ear tag. He is really producing beefy animals."

John and I would like to thank everyone we met while at Farmfair. It was such a great show and an incredible experience. Many thanks to Fleur Keast, the Farmfair Australian ambassador who organised all of our activities, accommodation and travel – such a great host. Thanks also to Cathy and Lee Monteith (Honeybrook Lowlines) and Neil and Jan Effertz (Loala Lowlines) for having us at their homes. It was such a great experience and a trip we will always remember.



**"big wins in the show ring – it's all in the breeding"**

Registered sires, females, licensed semen and embryos available for local and overseas markets.

Check our website for the latest sale offerings.  
Quality beef available from our paddock to your plate.  
Expert and practical advice. Visitors always welcome.

Enquiries to : Gary & Shelley Turnham  
42 Dixon Road, Gisborne VIC 3437  
Ph: +61 3 5428 1458 or +61 418 521 791  
Email: [info@barregowalowline.com.au](mailto:info@barregowalowline.com.au)  
[www.barregowalowline.com.au](http://www.barregowalowline.com.au)



***Barregowa Dusk and her calf Barregowa Firefly***

**Dusk had a great year in the show ring (and she produced an awesome calf)**

2010 Sydney Royal Easter Show (Feature Breed) 2nd Place in a class of 11.  
2010 Royal Melbourne Show - Reserve Senior Champion Female  
2010 Ballarat Feature Show - Supreme Lowline Exhibit  
2010 Kyneton Show - Grand Champion Small Breeds Female & Reserve Interbreed Female



# Taking Lowlines to the v

By LEA COGLAN

**V**ICTORIAN Lowline breeders Peter and Jeanette Stebbins were gobsmacked when embryos from their stud sold for nearly triple the price at a national auction in North America.

The moment in 2008 that the four embryos sold for \$3100 a piece – a sale record to this day – solidified the couple’s international reputation.

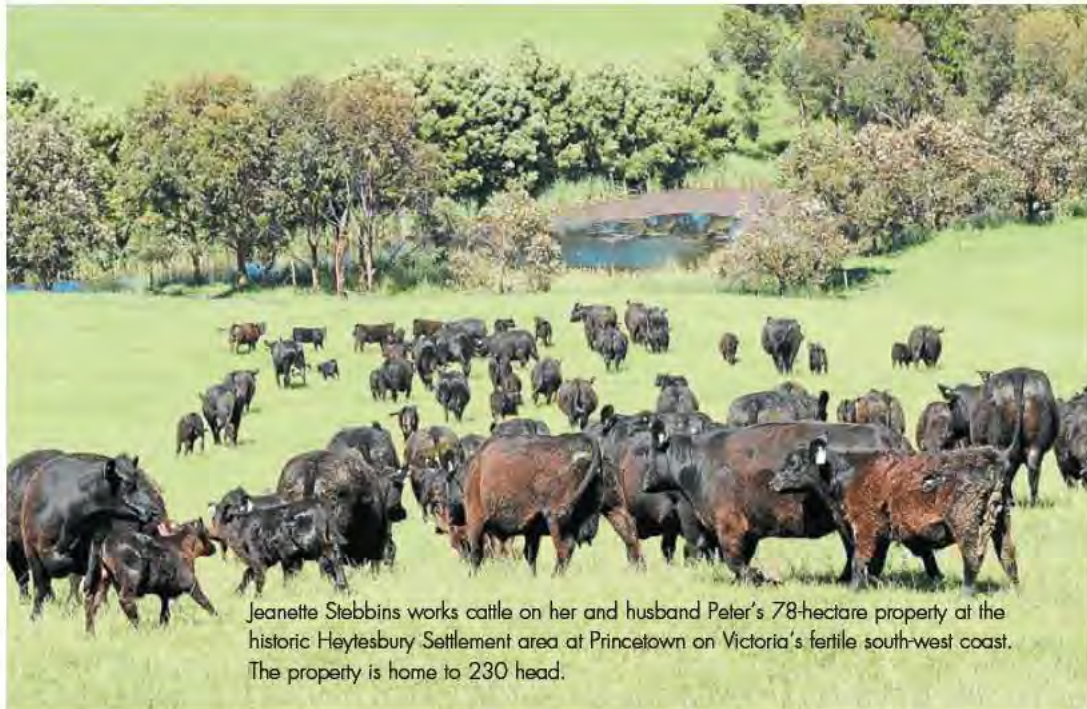
“We normally sell our embryos for \$1000 each but these were something out of the box,” Jeanette recalled.

“I advised the auctioneer that the reserve was \$1200 each and he laughed and said embryos normally fetch between \$400 and \$450 each.

“So, the auction started and bidding went frantic.

“Before we knew it the price had reached \$1300 – our hearts were in our mouths.

“We ended up with \$3100 per embryo.”



Jeanette Stebbins works cattle on her and husband Peter’s 78-hectare property at the historic Heytesbury Settlement area at Princetown on Victoria’s fertile south-west coast. The property is home to 230 head.

The sale typified the standing of the Stebbins’ Ardrossan Lowlines, Victoria’s foundation stud and a foundation member of the Australian Lowline Cattle Association, on the international stage, particularly in the US and Canada.

Ardrossan Lowlines first came to the attention of America’s beef industry after an article on the stud appeared in an American

magazine, *Farm and Ranch Living*, in early 2005.

The article generated huge interest in the US stud stock sector – 85 inquiries for cattle and about 300 general inquiries.

The overwhelming response prompted Peter and Jeanette to undertake a whirlwind trip to the US where they visited 13 states in 18 days, meeting many of the people who had contacted them.

It started a lucrative export business for the couple, which has seen them dispatch embryos, semen and live animals from their stud stock all over the world.

Recently, the couple sent 32 embryos to two different clients in Northern America, and had a shipment of live cattle destined for Thailand last December.

Two years before that momentous

sale day, Peter and Jeanette forged a relationship with Minnesota Angus Breeders, Gary and Terry Gilbert, and formed The Ausmerica Alliance Lowline Stud.

The Stebbins have sent live cattle and embryos to the Gilberts’ property and have part ownership in recipients there.

“They were looking for something different and liked the idea of Lowline cattle,” Jeanette said.

“It’s been wonderful and really successful.

“We’ve sent over cows and bulls and young stock.

“We’ve also sent embryos and semen, a really diverse range of genetics.

“We’ve had wonderful success with the semen which has produced a grand champion at the



Ardrossan Jamberoo, now standing in the US, where his progeny are breeding on for Ardrossan’s delighted clients.



# world



Producers need to not think about getting stud prices for commercial animals; they need to look at the big picture.



Jeanette Stebbins with her internationally acclaimed Lowlines at Princetown. "It's a great animal to cross for the beef market," she says.

National Stock Show in Denver."

Jeanette believes genetic diversity is the key to the family's successful export of Lowlines.

"When Peter and I first started this we decided we were going to have diverse genetics, something different but proven and something others didn't have," Jeanette said.

"I remember being asked by one of the biggest Lowline breeders in

America to identify the best Lowline stock at the Denver show and I truly couldn't tell the difference between any of them.

"He agreed and said that's why we need new genetics."

Jeanette said it was satisfying to find that most of the major Lowline breeders in America have used Ardrossan Lowline genetics.

Jeanette is passionate about the Lowline breed.

"They are a quiet animal and the temperament is reflected in the eating ability of the meat," Jeanette said.

"I love the fact they are suited to small acreages, and the freezer size of the carcass."

The couple started Ardrossan Lowlines in 1992. Today, the couple's 78-hectare property at the historic Heytesbury Settlement area at Princetown on Victoria's fertile southwest coast is home to 230 head, down from its normal size thanks to good sales, the most recent 30 head.

Jeanette believes commercialising the Lowline breed is critical to the industry's future success.

"We ourselves have gone commercial and sell bulls to dairy farmers," she said.

"It's a great animal to cross for the beef market.

"We need to get our beef out there, in a branded product, but we need a lot of producers on board.

"Producers need to not think about getting stud prices for commercial animals; they need to look at the big picture."

Jeanette said recent carcass competition wins by Lowline beef were helping to push the commercial side of the breed.

However, she believes those wins haven't been promoted as widely as they could be.

Jeanette thinks her age – she is 61 – may be a limiting factor in her bid to continue Ardrossan Lowlines and improve the Australian Lowline industry.

But she has no intention to stop, for now. "I get so much pleasure out of seeing other people enjoy our cattle," Jeanette said. "It's a big thrill."

## Woolstone Park Lowlines

Supreme Champion  
NZ Royal A & P Show  
2002, 2006, 2007, 2008 & 2009

Philip & Kay Worthington,  
Woolstone, McIntosh's Road, RD1 RANGIORA 7471, NZ  
Phone: +64 3 313 6730  
Email: woolstone@scorch.co.nz

15-42985

## kin kin

Lowline Stud



TOP QUALITY REGISTERED  
LOWLINE CATTLE FOR SALE

BREEDER OF SHOW CHAMPIONS

FAYE SCHILTE - NOOSA SHIRE, QLD

Ph: (07) 5485 4278

email: hafakinkin6@bigpond.com

1538174





**T**HE Lowline breed was certainly the winner at Sydney Royal last year. As feature breed, they displayed all the aspects of their breed to perfection.

With more than 200 entries, judging day was spectacular. Large classes reinforced the strong presence of the breed in the show ring and in the shed.

Breeders were kept busy fielding questions from small area farmers looking for animals. "Foodies" were attracted by the high quality of Lowline beef. The commercial breeders promoted their product with a forum at the Lowline site and with daily taste testings of juicy, tender Lowline beef in the Woolworths Dome precinct.

The stud breeders earned respect for their magnificent bulls and cows. The youth were present in large numbers with 67 entries in the Lowline paraders competitions. The farewell parade with over 150 animals in the main arena was an impressive sight.

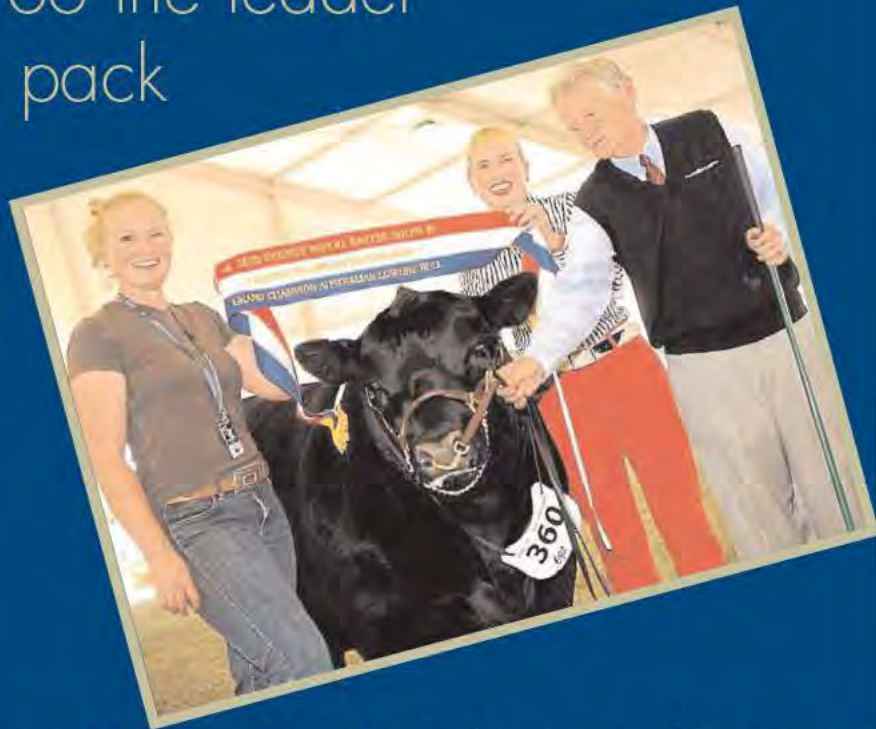
The gold shirts of the parade handlers reflected a golden week for Lowlines.

BELOW: Tammy Breuer, Allambie Lowlines, Dubbo, with Lucy Newham, Cowra, Heather Rooney, Allambie, and Steve Bevan, Gilgandra, with the Allambie winning breeders group.



# Our golden

## Jackaroo the leader of the pack



A BEEFY, proven sire with all the desirable traits sought from the modern Lowline breed was senior and grand champion bull at last year's Sydney Royal Show where Australian Lowlines strutted their stuff as the event's feature breed.

Yarra Ranges Jackaroo, from Natarsha and John Canny's Yarra Ranges stud, Yea, Victoria captured the attention of Bill Dunlop, Dunlop Charolais, Emerald Beach, NSW. Natarsha said the 30 month old bull, weighing 692 kilograms, had already been used in the herd, siring his first calf at 14 months.

Jackaroo had only been shown three times – the first as a calf at foot when its dam, Monte Allegro Zelma, won champion female at the 2008 Bendigo

show and then at 11 months, when it won supreme breed exhibit at Melbourne Royal Show. Natarsha said Jackaroo, whose semen has been exported to the US, had an eye muscle area (EMA) of 106 square centimetres and 20 and 16 millimetres of fat on the rump and rib.

Jackaroo was the only animal Yarra Ranges brought to Sydney from the stud run alongside its Wild Grass Angus herd. In reserve to Jackaroo, was Serena Downs Captain Arthur from Chris and Michael Noel's Serena Downs stud, Windsor Downs. By Trungley Tiger's Eye and from Monte Allegro Roberta, the two-year-old bull weighed 544kg with a 96cm<sup>2</sup> EMA.

Serena Downs also exhibited the reserve junior female, Serena Downs Lady Abigail, by Elandra Park Sam from Casa Donaldo Anika. Both their reserves were

champions of their divisions at Canberra Royal. Finishing one place better as junior female was Allambie Eva, exhibited by Tammy Breuer and Robert and

Peter Miller, Allambie Lowlines, Dubbo. Eva was by Aristocrat, a former Canberra junior and grand champion and junior and grand at the 2008 NSW Beef Spectacular and from Allambie Evelyn.

Also by Aristocrat, was their juvenile champion bull, Allambie E Der Jazzman, which at 15 months weighed 318kg with 65cm<sup>2</sup> EMA and fat scans of six and five millimetres on the rump and rib.

Allambie's ribbons also extended to reserve senior female, with Allambie Moonbeam - last year's senior and grand female - by former Sydney and Brisbane grand champion, The Glee Woodstock. Allambie also



# week

## SYDNEY ROYAL FEATURE BREED

Jackaroo had only been shown three times – the first as a calf at foot when its dam, Monte Allegro Zelma, won champion female at the 2008 Bendigo show and then at 11 months, when it won supreme breed exhibit at Melbourne Royal Show. Natarsha said Jackaroo, whose semen has been exported to the US, had an eye muscle area (EMA) of 106 square centimetres and 20 and 16 millimetres of fat on the rump and rib.

LEFT: Natarsha Canny, Yarra Ranges, Yea, Victoria, and Kathryn Humphries, Pfizer Animal Products, sash the grand champion Australian Lowline bull, Yarra Ranges Jackaroo, held by Gavin Kalliday, Merrick, Vic.

exhibited the winning breeders group and pair of females and was second in the pair of bulls. First in the pair went to International Animal Health Products, Schofields,

Reserve junior bull went to Elandra Park Elvis, exhibited by Jane Ristrom, Lang Lang, Vic. The almost yearling bull was by Elandra Park Yodgee from Elandra Park Bombshell.

Junior champion bull was Rotherwood Diablo, from Vicki Gilbert's Rotherwood stud, Cann River near Orbost, Vic. At 19 months it weighed 476kg with an 86cm<sup>2</sup> EMA and 12 and eight millimetres of fat on the rump and rib. They also won reserve juvenile female champion with a Rotherwood Boxer daughter, Rotherwood Elegant

Girl, from Elandra Park Wish.

Keimoi Lowlines also made an appearance by taking out the reserve junior bull award with Keimoi Dynasty, also this year's grand champion bull at Canberra.

Shown by Keith and Moira Smith, Keimoi, Goulburn, it weighed 448kg at 18 months.

Also toasting their success were Julie and Greg Knight, Wanamara stud, Major Plains, near Dookey, Vic, when their Wanamara Guinness daughter, Wanamara Goanna Opal, won champion juvenile female.

Its sire was the 2008 junior champion while its dam, Goan Opal Star, was bought two years ago at a stud dispersal with a bull calf at foot which also finished second in its class.

More Sydney Show results, p37.



Sally and Judy Yearbury (left and far right) with Herdsman award winners, Daniel Scicluna, Schofields; Sophie Martin, Seven Hills; Christina Schiller, Toowoomba; Caitlin Chandler, Tennyson, and Georgia Davies, NZ.


RIGHT: A young show goer takes a seat on one of the exhibits with this year's feature breed, the Australian Lowline.



ABOVE: The Australian Lowline final farewell parade.



LEFT: Christine and Michael Noel, Serena Downs, Windsor Downs.



**ASTRALGUS®**  
 Lowline stud & Vineyard  
 (Macedon Ranges, Victoria)  
 Lovely registered and commercial Lowline cattle for sale at very reasonable prices.  
 Rod McNeil 0400 660 200  
 www.astralgus.com

1537885



# Brisbane teen lives the Lowline dream

**F**OURTEEN-year-old city girl Sharnie Rudd (pictured) dreams of owning her own Lowline stud, and thanks to Kobblevale Lowlines she is well on her way.

Sharnie, who lives in the outer Brisbane suburb of Brighton, was part of a group of students from Queensland and NSW who attended a three-day youth camp at Kobblevale Lowlines in Jandowae, 259km west of Brisbane, in October.

The event was part of the ACLA's annual Member Muster, to offer a way for members to network and to learn new aspects of cattle production.

Participants toured a nearby feedlot and took sessions on nutrition, cross-breeding and fertility.

Organiser Lee Labrie says the program is tailored to educating current members, attracting new members and developing their young.

The student group that Sharnie was a part of learnt about the

different aspects of breeding, managing and showing cattle.

After the three days, stud owners, the LaBrie family, selected a student to receive their very own Lowline heifer, as a reward for their participation.

Kobblevale Geranium, otherwise known as Gerry, is currently being broken in at Kobblevale before she moves to her new home at a Bridgeman Downs property.

Sharnie is also buying a second heifer to go with Gerry.

Sharnie said she was surprised but excited to win the heifer.

"There were other students at the camp that came from properties so I was surprised to have done so well," Sharnie said.

Sharnie's fascination with cattle started when she began Year 8 at Dakabin High School, at Dakabin in the Moreton Bay Region Shire about 26km north of Brisbane, two years ago.

The school shows a team of Lowline, Square Meater and



Sharnie said. "It's something you don't do every day.

*I've always loved animals and when I started high school I got involved in showing cattle... It's something you don't do every day.*

"I like Lowlines because they are well suited to small acreage and they are a very placid animal."

Since joining the school's show team, Sharnie has helped prepare and show animals at numerous shows including the Brisbane Exhibition, Kilcoy Show and Toogoolawah Show.

Sahiwal cattle on the show circuit.

"I've always loved animals and when I started high school I got involved in showing cattle,"

She hopes to one day be showing her own cattle from her own stud.



## Winning smiles at the Queensland Member Muster, Kobblevale, Jandowae, October 1-3, 2010.



Reece Cole, Cole Glen Stud, Rockhampton, Kate Baxter, Condobolin, NSW, and Sarah Falkenhagen, Tanview Lowlines, Boonah, Qld.



Heather Earney, Condobolin, NSW.



Nathan Falkenhagen, Tanview Lowlines, Boonah, Qld.



Angela Maranik, Mara Park, Jiliby, NSW.



LEFT: Emmy Hutt, Dakabin, Qld.



Lucy Kuipers, Elle Kay Stud, Londonderry, NSW.



RIGHT: Robyn Kuipers, Elle Kay Stud, Londonderry, NSW.



# CARCASE WINS A 'REAL BEEF' EDGE

By MALCOLM McCOSKER

A SUCCESSION of carcass wins by Lowlines and their crosses affirms the breed's rightful place as a serious producer of quality table beef rather than small acreage farm 'pets' as some detractors may yet wish to describe them.

While dynamic breed promoter Margo Hayes, Vitulus Stud, Thornton, near Brisbane, has been at the forefront of demonstrating a 'real beef' commercial edge with numerous carcass wins, these are not in isolation, with breed crosses also chalking up major successes southern states and in New Zealand.

Vitulus Lowline cross carcass triumphs reached a climax with grand champion carcass in the 2007 Royal Queensland Show led steer carcass competition, with the same grand championship repeated from the led steer carcass competition at Brisbane in 2009, as well as champion lightweight carcass and MSA eating award, and grand heavyweight carcass at the same show. More success came in 2010 with champion heavyweight carcass in the Warwick Show and

Rodeo society hoof and hook competition. In the same competition in 2008 a Vitulus entry was third-placed medium weight carcass.

Also in 2008 Vitulus Lowline entries came third in the led steer carcass competition medium weight competition and third lightweight in the Sydney Royal purebred steer carcass competition.

In the 2007 Warwick Show and rodeo hoof and hook competition a Vitulus Lowline entry came second in the medium weight class.

Earlier successes included winner of MSA eating quality in both lightweight classes in the 2006 Brisbane Royal led steer carcass competition.

Margo Hayes' march of carcass successes goes back to Warwick hoof and hook competition in 2005 where she had first place lightweight carcass.

Also starring with Lowline cross carcasses at Brisbane were Tanya and Kenneth Falkenhagen of Tanview Lowline Stud, Boonah. The Falkenhagens took champion middleweight carcass award at

## Third standout title

LOWLINE-influenced steers continued to confound the breed's critics when they claimed their third significant led steer hook championship in Brisbane in four years on Saturday.

After grand championship wins in 2007 and 2009, a steer carrying 50pc Lowline genetics also clinched this year's medium-weight championship for exhibitors Ken and Tanya Falkenhagen, Tanview, Boonah. The calf was promoted to the front line in hoof judging, but did not figure in

the major ring placings. He was fed ad lib for about 100 days, but had no previous show outing prior to Brisbane.

The hook champion was a natural calf by purebred Lowline bull, Krugerai Ziggy, used over first-calf Limousin breeders with great success by the Falkenhagens.

He scored 93 points in the chillers, producing perfect fat depth recordings and losing only two points for fat distribution. - *Queensland Country Life*, August 12, 2010.

Vitulus Lowline-cross carcass triumphs reached a climax with grand champion carcass in the 2007 Royal Queensland Show led steer carcass competition.

medium weight carcass, taking these awards in a field of 286 entries. Linda also has scored major championships with her stud cattle at Adelaide and Melbourne Royal shows.

At Adelaide in 2009 her magnificent young heifer Colombo Park Electra became junior champion, then grand champion female before being judged supreme Lowline exhibit. Also at Adelaide she showed junior champion bull Colombo Park Encore.

A major win at Melbourne Royal was with senior champion bull Colombo Park Debussy.

Lynda's latest success was third on the hoof in the large Pakenham steer competition with her Lowline/Hereford-cross entry which weighed 455kg and dressed 57pc on the carcass rail.

Also demonstrating the suitability of Lowlines as an elite beef breed is leading New Zealand breeder Sally Yearbury of Ploughbright Stud at Cambridge in the lush green pasture paddocks of Waikato, in the North Island.

Brisbane with a steer by a Kougarie Lowline bull over a pure Limousin cow, the same carcass going on to become middleweight jackpot winner. These wins with the Tanview carcasses as well as stud cattle gave the Falkenhagens the Rabobank high achiever award for combined stud and commercial points scored.

Carcass successes with Lowline cross cattle also have been enjoyed by leading Victorian breeder Lynda Senger-Whitehead, Colombo Park Stud, Shoreham.

Lynda took the grand champion carcass award at the 2005 Melbourne Royal with a Lowline cross that earlier was champion



# PLEASANT ADDICTION

By MALCOLM McCOSKER

**O**NCE caught it's a hard bug to shake off, says renowned stud cattle breeder and show fitter Tanya Falkenhagen about her "addiction" to preparing and showing livestock.

Operating Tanview Fitting Service on a 220-hectare (550-acre) property at Boonah in partnership with her husband Kenneth, Tanya has been equally successful in showing champions for other people as well as shouldering her own cloaks of ribbons won by Tanview's stud cattle.

A major recent success was at the 2010 Royal Queensland Show with grand champion Lowline bull Tanview DJ which graduated to supreme Lowline exhibit and then supreme champion of all the small breeds judged in the second week of the Ekka. DJ also was champion on the West Moreton show circuit.

By Kobblevale Wilberforce and from Allambie Genivier, this magnificent young bull is so docile he can be haltered and led by Tanya and Ken's five-year-old daughter Sarah.

While good temperament is highly heritable in cattle, DJ's calm nature also is testament to the patient and painstaking training and handling that is a hallmark of Tanview Fitting Service.

Tanya's attraction to Lowlines started about five years ago when she prepared and showed animals for Weeroona and then Kougari Studs.

Deciding that Lowlines were the



RNA president Allan Warby sashes small breeds supreme interbreed bull at the Royal Queensland Show, the Lowline Tanview DJ, owned by Tanya (pictured) and Kenneth Falkenhagen, Tanview Stud, Boonah.

## Major show successes

**Tanview Fitting Service**

Where: Boonah

Property size: 220 hectare

Stud herd: 30 cows

First bought Lowlines: 2006

ideal combination of a hornless small breed that's easy to handle, the Falkenhagens formed their own stud in 2006 with foundation cows from Tammy Breuer's Allambie Stud, Dubbo, NSW.

Since then they have expanded with top genetic selections to build up a Lowline stud herd of around 30 cows and breeding such outstanding bulls as Tanview DJ and Tanview Country Boy on the property where they had already established Tanview Limousin Stud as well as a Pinzgauer stud more recently.

In addition to her numerous stud cattle successes, Tanya also took

the RNA champion middleweight steer carcass award with a steer by a Kougari Lowline bull used over a pure Limousin cow, the same carcass taking the middleweight jackpot award.

Accumulation of stud and commercial cattle points gave Tanview the Rabobank high achiever award at the 2010 Ekka.

Tanya also throws light on a subject that puzzles many people – the ability of small Lowline bulls to achieve romantic encounters with larger breed cows.

"They'll always get big cows in calf, make no mistake about that," she declares.

They'll always get big cows in calf. Make no mistake about that.

With characteristic modesty about her numerous successes with Tanview-owned and clients' animals, Tanya says there is no easy way to turn out animals for ribbon scoring.

"You just have to keep working with the animals, treat them well and be patient with training over and over again until the cattle know what is required of them and handle well," she said.

This sort of control is essential when large numbers of cattle are in her care, like the 46 she took for showing during the whole 2010 Brisbane Ekka, with the maximum for one day being 27 Lowlines and Dexters. She says careful feeding also is essential, exclusively using feed from her sponsoring company Mi-Feed at Yandina.

"If anyone else is preparing animals at home for my show teams they come under my guidance on what to feed them and three or four weeks out the animals come to me to get used to the feed we give," Tanya said.

With these cattle handling skills on tap from parents, it's no surprise that the Falkenhagen children, Nathan (8) and Sarah (5) already are highly confident animal paraders, with Sarah having taken champion handler in her age group.

● Full show coverage p37-43.

# ALLENS PRIMED FOR MORE SUCCESS

By BRAD COOPER

**VICTORIAN** Lowline breeders David and Pamela Allen are primed to enter more carcass competitions after posting an encouraging debut performance this year.

Out of 61 animals entered, the couple's steers from their DP Park operation finished 5th and equal 7th at the Noorat Hoof and Hook competition judged at Geelong and Camperdown in November. The result has given the Allens the confidence to try again next year.

"The idea was to enter one steer originally but that soon turned into four," David said. "We chose different types and raised them on grass only to see what results could be achieved and to give a

baseline for future carcass competitions."

The Allens entered two, 14-month old steers in the light-weight section and one, 19 and one, 21 months old in the middle weight section. The two 14-month old steers came first and third on the hook in their class out of 10. The first placegetter, the smallest and youngest steer in the competition, also came third on the hoof in its class.

The two steers in the middle weight class also finished in the top 10 on the hoof and came a very commendable equal sixth on the hook out of a class of 25. Other Lowline breeders entering the hoof part of the competition included Jeanette and Peter Stebbins, of Ardrossan, (one pure Lowline) and John Ryan, a commercial breeder, who also entered



Peter Stebbins, Ardrossan Stud, looks over the carcass entries in the chiller.

The idea was to enter one steer originally, but that soon turned into four.

one pure Lowline. The placings in the hoof section were John Ryan (2nd), Pam and Dave Allen (3rd) and Jeanette and Peter Stebbins (5th). Results of the hook section were: Class 1 – 1st Pam and David Allen, 2nd John Ryan, 3rd Pam and Dave Allen and equal 4th Jeanette and Peter Stebbins. Class 2 – Pam and David Allen two steers.

With 42 out of the 61 entrants scoring less than the Lowlines' overall score of 75, David said the breed was a long way from being outclassed.

"Considering the overall standard of the entrants, the Lowline steers upheld our expectations," David said. "It would be fantastic to see more Lowline breeders involved in this competition next year."

The Allens have been breeding Lowlines since 2003 from their DP Park Lowline Stud in south western Victoria. Prior to January 2008, they were known as Snowy Mountains Lowlines and were based at Jindabyne in the Snowy Mountains of NSW.

Since arriving in Victoria, the DP Park herd has grown from nine to 55 head of purebred Lowlines run on 52 hectares. Up until recently the Allens have just been focused on increasing the herd. They have now got to the stage where they finally have all types of stock for sale. They are also starting to sell their own meat, prepared by the local butcher to customer specifications.

Cattle are mainly strip grazed all year round, and only require a few bales of hay in the middle of winter if or when the grass dries off in summer.

● Anyone interested in entering the Noorat Hoof and Hook next year should call David Allen on (03) 5598 6220 or mobile 0417 354 405 for more information.

## David and Pamela Allen

DP Park

Where: South Western Victoria

Property size: 52 hectares

Number of head: 55

First bought Lowlines: 2003



# BLOCKA WOWS THEM

**A** MEATY, muscly steer aptly named Blocka has steamrolled the record-breaking field of 326 led steers to claim the top gong of grand champion led steer of the Royal Queensland Show.

The 486kg, 14-month-old champion was also champion medium-weight steer, exhibited by 14-year-old Shane Riehl on behalf of his parents, Bruce and Debbie Riehl, Fairview, Mt Tyson, Queensland.



Blocka was bred by the Riehl family on their commercial cattle property, sired by a Lowline bull, Lik Lik Blinky, and out of a Murray Grey/Charolais-cross cow.

Mrs Riehl said the family was overwhelmed with the win, which was their first in the five years they had been exhibiting steers at the Ekka.

lot, Texas, had the big task of whittling the huge field of steers down to just one champion. "What we're looking for is optimum fat cover, optimum muscling and optimum length of body and this steer has it," Mr Nolan said.

A big crowd turned out for the led steer judging on Wednesday, where they were treated to some fascinating insights into what makes a good steer not only on the hoof but on the hook.

In referencing the forthcoming federal election, judge Terry Nolan said he would do a Julia Gillard and "keep it real" in his judging responsibilities, and he and fellow judge Russell Handley, didn't disappoint, explaining the pros and cons of each steer as they went through the elimination process.

Mr Nolan said the steers on display were magnificent, with some "ripping steers" among the entries, particularly noting the impact of crossbreeding in producing many standout steers.

"Crossbreeding is alive and well in the country and it's great to see the quality of these hybrid

steers – the beef industry is in great shape," he said. – Story: MELISSA MARTIN. Picture: RODNEY GREEN. From Queensland Country Life, August 12, 2010.

Shane Riehl, Fairview, Mt Tyson, with his family's grand champion led steer of the 2010 Royal Queensland Show, Blocka, a 486kg, 14-month-old Lowline-cross.

What we are looking for is optimum fat cover, optimum muscling and optimum length of body and this steer has it.

Blocka was no stranger to the show ring this season having taken out grand champion at Toowoomba Royal, Wandoan and Chinchilla shows, and reserve champion at Roma and Taroom shows, with young Shane exhibiting while Travis Luscombe of Ace High Fitting Service, Toowoomba, made sure he looked his shiny-coated best.

Judges, Terry Nolan, Nolan Meats, and Russell Handley, livestock manager at Whyalla feed-

## Let our Lowline Genetics make your stud a winner



**Ardrossan Jamberoo**

In 2010 Jamberoo, and his sire Neron, have produced:  
**Grand Champion at Denver, USA**  
**First Junior Champion Heifer at Ohio**  
**First Junior Res. Champion Heifer at Ohio**  
Jamberoo semen now available in Australia and New Zealand.

**Genetics + Grass = Growth = \$\$\$Gain**



Jeanette & Peter Stebbins  
1109 The Boulevard  
Princetown, Vic 3269  
Ph (03) 5598 8000  
stebbins@bigpond.com.au  
www.ardrossanlowline.com.au

15-02743





By JULIAN LUKE

It doesn't take long for Tim Franzmann to tell you why he loves Lowlines. His passion for the breed is obvious.

"Temperament is everything – good temperament means good meat," he says.

But there are a few other reasons that have confirmed his love for the Lowlines, which he and wife Michelle breed and finish on their main block Timitch Hill, Cawarral, and another 60 hectare block at Ridgeland, in Central Queensland.

They have a stud, and also fatten steers which they sell through a unique farm-gate operation. But we'll get to that later.

"We actually started with a banana and papaya plantation, but that got burnt out in 2003," said Mr Franzmann, who is also a firefighter.

"We had an idea of running the cattle and doing the cropping at the same time; we weren't planning on getting as big as we have now. So we fenced the place off and started bringing the cows in."

Seven years later and they run about 50 head based on their main 10ha block at Cawarral. Mr Franzmann said the Lowlines were the perfect small acreage beast, but he said the breed needed to evolve from just handy "lawnmowers" to survive into the future. "We're coming out of the phase where everything was top dollar and everyone wanted to be a stud," he said.

"We have to look past what I call the 'ostrich phase'. Everyone got into ostriches in Australia and they made a million dollars a bird, but once they got past the glamour of the new idea that was the demise of the ostrich industry.

# Raising the Lowlin 'steaks' at Timitch

"So now we're coming out of the ostrich phase and we've got to start looking at the market. We don't attract top dollar in the ordinary beef market, so we've got to go another way. We have to start looking at the animals in more of a commercial sense."

Mr Franzmann said the breed had plenty going for it, including excellent calving rates, delicious meat and above all, amazing temperament.

He said Lowlines address persistent problems in the beef industry. One, they have small calves, between 15-25kg. "In the 50-odd calves we've had, we've only had one calving problem," he said.

The second benefit was their excellent fertility rates, with breeding females able to get back in calf within three months of calving.

Mr Franzmann said because the Lowlines were so much smaller than other cattle breeds, he simply was not getting what he considered the right price through conventional marketing channels.

"The problem with the Lowlines is people think that if the cattle are not big then they don't have any weight. That's been our big problem," he said. "So going through normal sale points, you tend to find you're down on the average price of the day simply because of the size and that's a real concern.

"In the last couple of years we've set up a meat market with basi-



Timitch Hill Alexander.

The breed had plenty going for it, including excellent calving rates, delicious meat and above all, amazing temperament.

cally on-farm-type selling. The customer rings us direct ... we basically marry customer to animal. A good mate of mine, Jason Knox at Knoxys Meat does the butchering and then the customer goes in and picks up the meat. It's all above-board and it's not farm-kill or anything like that.

"All we've really done is take out the middleman. So the customer deals with me direct and I deal with everything else that goes on."

Mr Franzmann said while they only sold about seven head in the

last financial year through this channel, he was aiming for 15 this financial year and has already sold eight since July.

The Franzmanns are aiming to increase this part of their business. They said this, or breed-specific butchers, might be what other smaller breeds need to do to survive long-term as meat cattle. "I think they will have to start going into breed-specific outlets," he said.

While Mr Franzmann has names for all of his animals and admits to being close to some in particular, like his second bull Santa Fe



# e Hill

Storm, he said he had no qualms about slaughtering from his herd. "I have no problems slaughtering them. If you have ever eaten Lowline meat, it is absolutely beautiful," he said.

Mr Franzmann and his wife, who is a geneticist, have two separate breeding lines – Santa Fe and Vitulus – and are currently introducing a third, Toro.

Mr Franzmann said the consistency across the steers was incredible. "There doesn't seem to be a lot of difference between our best and our worst steers and meat quality is exceptional," he said.

"So if you can stand a product up, irrespective of what it looks like on the hoof, and be fairly confident of the fact that it's going to present well to your customer, I think that's a big advantage."

RIGHT: Tim Franzmann walks with bull Santa Fe Storm on his property Timitch Hill at Cawarral, east of Rockhampton.



**Dp Park Lowline Stud**

David & Pamela Allen,  
1685 Cobden-Port Campbell Rd,  
Newfield, Victoria 3268, Australia  
Ph: (03) 5598 6220 mobile: 0417 354 405  
email: dp\_park@hotmail.com

**QUALITY STOCK AVAILABLE**

[www.dparklowlines.com](http://www.dparklowlines.com)

1548145

**BIG BOSS**

**LOWLINE MALENY**

Contact Ross French – Mobile: 0407 670 233  
raaneip@bigpond.com

1538378



# Labrie family Lowlines span paddock to plate

By MALCOLM McCOSKER

**B**Y spanning the full vertical integration spectrum from breeding and grazing cattle to putting premium grade branded beef on dinner plates, the Labrie family at Jandowae, on Queensland's Darling Downs, is well positioned to monitor quality indicators all along the way.

The Labries started breeding Lowlines on a property at Samsonvale, naming their stud Kobblevale after Kobble Creek, which ran through the place, and also running cattle on other country they leased at Mt Mee.

Foundation females came from The Glebe Stud at Peachester, from Don Burke's Binowee Stud at Moss Vale, NSW, and then from a stud at Narrabri. The family then selected bulls from Colomba Park at Shoreham, Victoria.

In 2000, the Labries moved their Lowline operations to the 648-hectare (1600-acre) Fairymount property on the old Rosevale Road near Jandowae which had been a cropping and bought-in steer operation. This land originally had been settled by German migrants to be operated as a dairy farm and Clydesdale Stud.

Lee Labrie, her husband Hugo (a former sea captain) and a son Phil now operate Kobblevale Lowlines on the property.

“We thought this would be a good cross for our country and in 2003 decided to start our own Brahman crossing program.”

Two other sons are also involved with the breed. Robert owns Longyard Lowline Stud and Ed has Eureka Stud and also works for Stanbroke Pastoral Co at Grantham.

While continuing to expand their pure Lowline breeding, they also became interested in crossing with Brahmans after buying 10 Lowline cows from Binnowee with Brahman-cross heifers at foot in 2001.

“We thought this would be a good cross for our country and in 2003 decided to start our own Brahman crossing program, using cows from the Cole family's Kenrol Stud near Rockhampton,” Lee said. “We then decided to take a step further and established a separate Brahman stud, which we named Jinghi Gully (after the original Jinghi Station on the Jimbour Plains).”

It didn't take long for that name to begin starring in show competition, with Jinghi Gully Valentine grand champion Brahman bull in Sydney in 2007 and more Jingi Gully broad



The distinctive Lowline/Brahman-cross, which the Labries call Brahmalsows.

ribbons at Sydney this year.

“We are now looking to keep steer production at about 50 percent Lowline and also mate a female herd of half Lowline and half Brahman, as well as three-quarter Lowline and quarter Brahman to give us greater versatility of breeding,” Lee said.

“We are also in the process of using a European cross, either

with Limousin or Charolais cows over the crossbred cows, thus ending up with a Lowline/Euro/Brahman as a terminal cross, with all the progeny for sale as slaughter cattle.”

To further vertically integrate their business, the Labries now have started marketing their own branded beef as Fairymount Fine Foods, selling to private buyers or through the



To further vertically integrate their business, the Labries now have started marketing their own branded beef as Fairymount Fine Foods, as shown by Lee and her son Phillip, selling to private buyers or through the Farmers Market in Toowoomba every second Sunday.

Farmers Market in Toowoomba every second Sunday.

To further streamline the operation they have bought a cool room transporter and next year hope to add a kitchen so that they can serve cooked beef cuts.

Following strict quality guidelines, the meat they sell as cuts must all be MSA graded above grade 5. Any carcasses below grade 5 end up as Lowline salami or biltong.

The Lowline and crossbred cattle on Fairymount graze on buffel, green panic and Rhodes grass pastures and wynn cassia, with access to forage crops and hay for the family's own use, plus increased plantings of old man saltbush that have now reached about 20ha to provide winter feed.

The property is in an average rainfall area of 650mm (26in) but in recent dry years before the latest wet, falls were as low as 250 to 300mm (10 to 12in).

Lee is in her second year as president of the Australian Lowline Cattle Association, which operates as a national body but has promotional groups in each state.

She played a major part in organising the large Lowline feature show at Sydney Royal last year which attracted 175 cattle.

Big things are ahead, with a breed feature show at Toogoolawah in 2011 and with a couple of big showings in 2012, which is the 20th anniversary of the Lowline breed derived in Australia.

## Windellama Downs Lowline Stud

Breeders of Purebred Australian Lowline Cattle

Champion Lowline Genetics



Top Quality Cattle for Small Acreages

Our cattle are all fully registered with ALCA & DNA typed.

Come and meet our quiet, friendly herd - on farm inspections always welcome!

**Christine Feldmanis & Peter Booth**

Masons - Owens Rd  
WINDELLAMA NSW 2580

GPS 35° 3' 17.34"S 149° 50' 46.69"E

Phone/Fax: 61 2 9798 5671 or 61 2 4844 5175

Mobile: 0416 047 488  
Email: windellamadowns@iinet.net.au

1542998



# Rocky Lowlines on the menu



ABOVE: George Birkbeck with Glenmore Jill at the Glenmore Homestead on the banks of the Fitzroy River.

If things go to plan, Lowline steaks will soon be gracing the plates of patrons at a new steakhouse at George and Judy Birkbeck's well-known Glenmore Homestead in Rockhampton.

Mr Birkbeck, who has a passion for the Lowline breed and has his own stud, now wants to trial a steakhouse at the Glenmore Homestead one night a week, featuring nothing but Lowline beef, sourced from Central Queensland breeders where possible.

Cattle have always been a fixture at the historical Glenmore Station, which was first selected as a 127 square mile (33,000ha) block in 1858 by John McCartney.

Samuel Birkbeck bought Glenmore in the 1860s and since then the station has remained in the Birkbeck family.

"The property suffered a lot of resumptions... it was a big block of dirt. It gradually went down to about 800 hectares and now the homestead sits on 8ha,"

Mr Birkbeck said.

"My great-grandfather drove 1500 head of cattle from the Queensland/NSW border overland to here, so that started cattle on Glenmore in 1865."

During the time the Birkbecks have owned the property it has been a cattle and dairy operation, but now the homestead is more run as a tourism venture, catering for functions and tours.

It's basically been cattle and dairy all the way through and now I've got hold of these little Lowlines. They're easy to handle; they're a really safe kind of cow and an old man like me can handle them... They're a perfect small acreage animal.

"It's basically been cattle and dairy all the way through and now I've got hold of these little Lowlines," he said.

"They're easy to handle; they're a really safe kind of cow and an old bloke like me can handle them."

The Birkbecks got into the Lowline breed about four years ago and while numbers have fluctuated since then, they currently have three – which Mr Birkbeck will increase.

"They're 60 percent the size of a

full-grown Angus but they're very nuggety, and all meat," he said.

"They're a perfect small acreage animal."

Mr Birkbeck candidly admits that he's never actually tasted a Lowline steak before. However this won't stop him from trialling the steakhouse.

"To me, the best thing I can do is create a market for Lowline beef here," he said. – *Story and pictures:*

*JULIAN LUKE.*



George and Judy Birkbeck's lowline cattle graze at Glenmore.



# Hong Kong export plan

By LEA COGHAN

**D**AVID Ritter's plan to export Australian Lowline beef to Hong Kong ticked all the boxes.

Wholesale primal cuts tested and approved under Hong Kong's quarantine protocols were dispatched to proposed distributors – a boutique supermarket chain owner and head chef of premium restaurants – in 2009.

They were well received, and terms and conditions between the parties were agreed.

Logistics and transport arrangements were in place, and a certified abattoir was appointed to carry out the slaughtering.

It was all systems go.

That was until the Australian dollar strengthened and the Hong Kong distributors became nervous about entering into a new contract in an uneasy economic climate.

The strong Aussie dollar – good for some businesses but disastrous for Australia's export, manufacturing and tourism industries – has put a dent in David's plan, but only temporarily.

David, a builder who runs more than 100 head of Lowline cattle at his family's 21-hectare property at Gobur, near Alexandra in Victoria, took up the opportunity to open up the new export market by chance.

"A relative who travelled the world regularly on other boutique food business saw a marketing opportunity for beef in Hong Kong," David said.



Dave Ritter, at his Gobur property near Melbourne, says export opportunities are ripe for the picking for Lowline beef.

"There is very little, if any, truly Australian beef in Hong Kong, and we thought there was an opportunity for a unique, Australian breed of cattle.

"As an Australian pure breed, there is definitely a market edge."

David said restaurateurs in Hong Kong recognised that they could sell smaller cuts of meat that cost less.

He said consumers were also becoming more aware about where their food came from.

"There is more global awareness of clean and green, and low carbon emissions," David said.

"People have moved on from steak hanging over the plate and Australia is in the box seat to offer the world quality, unadulterated premium food.

As an Australian pure breed, there is definitely a market edge.

"People are more conscious about the humane treatment of animals, and animals being grassfed, the way nature intended – free from steroids, hormones and GM feed."

It's the environmental features of Lowline cattle that attracted

David to the breed, a relatively new breed of cattle that was developed by the NSW Department of Agriculture from registered Angus stock at their research station in Trangie, NSW.

Seed stock was purchased from Scotland, Canada, America and selected Australian studs to form the foundation of the herd.

The first stock was sold to purchasers in August 1992.

David admits he had no farming background when he and wife Melissa started Abaminga Stud's foundation herd of 12 cows and calves, selected from some of the best studs in Australia, three and a half years ago.



# one out of the box



He was driven by a desire to show his three children – Amielle, 10, Sienna, 9, and Cooper, 7 – that “meat doesn’t just grow in polystyrene trays at the supermarket”.

The family splits its time between

the farm and a home on the Mornington Peninsula.

David says one the best attributes of the Lowline breed is its ability to finish off on grass.

“They are a placid animal and

compact – about two-thirds the size of a full Angus,” David said.

“They are very efficient feed converters and easy to handle, with minimal impact on fencing or carbon emissions.

“The meat is an environmentally conscious meat choice.”

While the strong Aussie dollar has halted the project for the time being, David found the lack of a guaranteed, quality supply of Lowline cattle was also a stumbling block.

“I started to establish a network of smaller acreage suppliers that could supply five to 10 animals each, once a year,” David said.

“The aim was to send 20 head of cattle a month to Hong Kong and they would be sourced from Victoria.

“But I haven’t been able to fill a year’s quota with producers prepared to provide cattle on my terms, even at attractive pricing.”

Another hurdle David is trying to overcome is finding markets for the second-grade cuts of meat – about 80 percent of the beast – as the distributors are only inter-

ested in primal cuts.

David hopes the project will get off the ground in 12 months.

“I am confident it will work,” David said.

“Everything depends on the Aussie dollar, and 10 US cents can make a huge difference.

“I need to work on securing a network of suppliers who are serious about commercial cattle.

“It will happen when commercial Lowline cattle are taken seriously by farmers, and producers realise they can provide an income stream, not just lawnmowing pets.”

David said there was enormous potential for Australian Lowline beef on the export market.

“We have also identified London as a potential market,” David said.

“And China is a massive market where there is enormous demand for good-quality food.

“In China and the new India, the explosion in manufacturing has created a lot of wealthy people.”

## Salisbury Park Stud

Breeding Quality Stud & Commercial Cattle



27 Salisbury Rd  
Blanket Flat NSW 2583  
Contact: Paul Phillips  
PH: 02 4835 2164  
www.salisburyparkstud.com.au

## MaraPark Lowlines

“Little Black Beauties”

MaraPark is situated on the Scenic Central Coast of New South Wales. We are interested in breeding quality animals and promoting the Lowline breed.

We have a selection of animals available For Sale.



For all enquiries contact: GAIL MARANIK  
604 Dicksons Road Phone: 02 4355 1093 Email:  
JILLIBY NSW 2259 Mobile: 0427 320 426 marapark@bigpond.com



# Be on guard against BVDV

**B**OVINE viral diarrhoea virus (BVDV) is a pestivirus that affects cattle. Two genotypes exist: type 1 and 2. Type 2 is not present in Australia and this article refers only to type 1.

Infection with BVDV is mild and usually goes unnoticed. After infection, a strong immunity develops. Vaccination with Pestigard can provide protection against infection.

The greatest impact BVDV has is when breeding females are infected. The outcome of infection is determined by the stage of

## VET TALK with John Jardine, BVSc

gestation at which infection occurs.

A wide range of effects can be observed, from reduced conception rates following infection around joining, embryonic death, abortion, still birth, birth of weak calves, or the birth of PI (persistently infected) calves if infection occurs during the first trimester and congenital effects if infected during the second trimester. PI cattle remain infected for their

lifetime, spreading the disease to other cattle. They are often poor doers and typically die between six and 24 months of age.

PI animals usually succumb to infection from a range of diseases including mucosal disease.

Mucosal disease is characterised by diarrhoea, high temperature, and ulcers in the mouth, vulva or on the feet, and is invariably fatal. Some PI calves appear normal and may live much longer. They remain the most important source of virus to other cattle, and if they survive to breeding age, they will always give birth to a PI calf.

The level of immunity and the stage of gestation at the time of introduction of BVDV determine the impact of introduction to a herd. For example, a herd that is unvaccinated that has never been




All beef producers' herds should consider BVDV control as a routine component of herd health management, says vet John Jardine.


exposed to the virus is highly susceptible. If the introduction occurs at a time when there are a significant number of early pregnant cows, the effects can be very serious.

All beef producers herds should consider BVDV control as a routine component of herd health management. Every herd has slightly different requirements and the initial step should be to talk to your veterinarian.

● Visit [www.bvdvaustralia.com.au](http://www.bvdvaustralia.com.au)



**Quiet, quality cattle for people to enjoy**



**Livestock and semen available**

Contact: Tim and Michele  
Phone: (07) 4935 4033  
Mobile: 0413 147 649  
351 Coorooman Creek Rd,  
Cawarral, Qld 4701.

**[www.tmhlowline.com](http://www.tmhlowline.com)**

1539182

**The Vet Group offers top service**



ESTABLISHED in July 2010, The Vet Group is the result of a merger between two successful veterinary groups, Allansford and Wollaston Veterinary Clinic (AWVC), and the Timboon Veterinary Group (TVG), based in Victoria.

Both have provided high-quality veterinary services to Victoria's South West since 1957 and 1971 respectively. The amalgamation of these two solid businesses has brought together 21 veterinarians with a diverse range of interests and expertise, providing the best possible veterinary service to their clients. Their practices provide high-quality, up-to-date large animal and small animal services to a broad range of clients over a wide geographical area. Services provided by The Vet Group include 24-hour veterinary service; herd health certification (EBL, JD); farm business, nutrition and pasture management and advice; disease investigation; pregnancy diagnosis services including ultrasound; fertility reports; embryo transfers; routine health products at competitive prices; and biosecurity.

● [www.thevetgroup.com.au](http://www.thevetgroup.com.au)





# Royal Canberra

Royal Canberra Show  
February 26-28, 2010  
Next show: February  
25-27, 2011

**BULL OVER 8 MONTHS AND NOT OVER 12 MONTHS**

1 173 Ellie Kay Excalibur, IA & LM Kulpers.  
BULL OVER 12 MONTHS AND NOT OVER 14 MONTHS

1 174 Daniels King Toby, D. Sadduna.  
BULL OVER 14 MONTHS AND NOT OVER 16 MONTHS

1 175 Ausbred Dynamite, International Animal Health Products Pty Ltd.

**BULL OVER 16 MONTHS AND NOT OVER 18 MONTHS**

1 176 Keimoi Dynasty, K & M Smith

2 177 Meszline The Don, S M Meszares.

**JUNIOR CHAMPION BULL**

176 KEIMOI DYNASTY, K & M SMITH.

Reserve Junior Champion Bull

175 Ausbred Dynamite, International Animal Health Products Pty Ltd.

**BULL OVER 20 MONTHS AND NOT OVER 24 MONTHS**

1 180 Serena Downs Captain Arthur, C & M Noel

2 178 Ausbred Dominator, International Animal Health Products Pty Ltd

3 179 Trungley Krytanite, BA & BA Higgins.

**BULL OVER 24 MONTHS AND NOT OVER 30 MONTHS**

1 181 Trungley Nuggett, BA & BA Higgins.

**BULL OVER 30 MONTHS**

1 182 Keimoi Kinsman, K & M Smith.

**SENIOR CHAMPION BULL**

190 Serena Downs Captain Arthur, C & M Noel.

**RESERVE SENIOR CHAMPION BULL**

181 Trungley Nuggett, BA & BA Higgins.

**GRAND CHAMPION BULL**

176 Keimoi Dynasty, K & M Smith.

**HEIFER OVER 8 MONTHS AND NOT OVER 12 MONTHS**

1 182 Serena Downs Tigerlily, C & M Noel.

**HEIFER OVER 12 MONTHS AND NOT OVER 14 MONTHS**

1 184 Keimoi Elle may, K & M Smith.

**HEIFER OVER 14 MONTHS AND NOT OVER 16 MONTHS**

1 186 Serena Downs Lady Abigail, C & M Noel

2 185 Keimoi Dream Girl, K & M Smith.

**HEIFER OVER 18 MONTHS AND NOT OVER 20 MONTHS**

1 190 Keimoi Dazzle, K & M Smith

2 189 Meszline Lily, S M Meszares

3 194 Serena Downs Surprise, C & M Noel

4 192 Salisbury Park Starlet, P Phillips

5 191 Elle Kay Honey-Belle, LA & LM Kulpers.

**JUNIOR CHAMPION FEMALE**

186 Serena Downs Lady Abigail, C & M Noel.



Junior and grand champion bull, Keimoi Dynasty; Keith and Moira Smith, Kei Moi, Goulburn, NSW.

**RESERVE JUNIOR CHAMPION FEMALE**

184 Keimoi Elle may, K & M Smith.

**COW OR HEIFER UNDER 24 MONTHS AND NOT OVER 30 MONTHS**

1 195 Keimoi Christabel, K & M Smith.

**COW OVER 30 MONTHS**

1 198 Trungley Turquoise, BA & BA Higgins

2 197 Ashdanvid Elizabeth, A Kulpers

3 196 Allambie Topar, P Phillip.

**SENIOR CHAMPION FEMALE**

195 Keimoi Christabel, K & M Smith.

**RESERVE SENIOR CHAMPION FEMALE**

198 Trungley Turquoise, BA & BA Higgins.

Grand Champion Female: 195 Keimoi Christabel, K & M Smith.

**SUPREME CHAMPION OF BREED**

195 Keimoi Christabel, K & M Smith.

**COW OVER 30 MONTHS**

1 201 K & M Smith

2 200 C & M Noel

3 633 International Animal Health Products.

## SYDNEY ROYAL



Winner of Sydney Royal Easter Show Lowline Feature Breed Herdsman Award for 2010, Georgia Davies, from New Zealand. Turn the page for the full Sydney Royal report.



Senior, grand and supreme champion female, Keimoi Christabel; Keith and Moira Smith, Kei Moi, Goulburn, NSW.



# Sydney Royal

Sydney Royal Easter Show  
April 1-14, 2010  
Next show: April 14-27,  
2011

**Female, 9 and not over 12 months**

- 1 180 VICKI & PHILIP GILBERT, CANN RIVER VIC 3890 – ROTHERWOOD ELEGANT GIRL
- 2 181 P & R MILLER & T BREUER, DUBBO NSW 2830 – ALLAMBIE ALESHA
- 3 182 THE WAMSLEY FAMILY TRUST, TAREE NSW 2430 – SHOWDOWN GEM

**Female, over 12 and not over 14 months**

- 1 189 G & J KNIGHT, MAJOR PLAINS VIC 3725 – WANAMARA GOANNA OPAL
- 2 188 MRS L P SENGER-WHITEHEAD, SHOREHAM VIC 3916 – COLOMBO PARK ELEKTRA
- 3 185 THE WAMSLEY FAMILY TRUST, TAREE NSW 2430 – SHOWDOWN BONNIE
- 4 192 MR R C LABRIE, JANDOWAE QLD 4410 – KOBBLEVALE FLEUR (ET)

**Female, over 14 and not over 16 months**

- 1 195 KEITH & MOIRA SMITH, GOULBURN NSW 2580 – KEIMOI ELLE MAY
- 2 1385 MR P A LABRIE, JANDOWAE QLD 4410 – KOBBLEVALE TRENDAH
- 3 196 MR G PODBURY, TYLDEN VIC 3444 – LILLIPUT LADY EXQUISITE

**JUVENILE CHAMPION FEMALE**

Winner 189 G & J KNIGHT, MAJOR PLAINS VIC 3725 – WANAMARA GOANNA OPAL

**Reserve Juvenile Champion Female**

Winner 180 VICKI & PHILIP GILBERT, CANN RIVER VIC 3890 – ROTHERWOOD ELEGANT GIRL

**Female, over 16 and not over 18 months**

- 1 202 P & R MILLER & T BREUER, DUBBO NSW 2830 – ALLAMBIE BO DEREK
- 2 203 MR H N HOLLIS, THERESA PARK NSW 2570 – RIVENMEAD DIAMANTE

**Female, over 18 and not over 19 months**

- 3 200 MR DANIEL SCICLUNA, SCHOFIELDS NSW 2762 – KOBBLEVALE ROMA
- 4 199 MR P A LABRIE, JANDOWAE QLD 4410 – KOBBLEVALE RIANA (ET)

**Female, over 19 and not over 20 months**

- 1 206 MRS C & DR M NOEL, WINDSOR DOWNS NSW 2756 – SERENA DOWNS LADY ABIGAIL
- 2 205 W J & H M BELTON, MERRICKS VIC 3916 – URILA DEVA

**Female, over 20 and not over 21 months**

- 3 209 KEITH & MOIRA SMITH, GOULBURN NSW 2580 – KEIMOI DREAM GIRL
- 4 208 MS MARGARET SMITH, BOONAH QLD 4310 – KOUGARI DANCING QUEEN

**Female, over 21 and not over 22 months**

- 1 222 P & R MILLER & T BREUER, DUBBO NSW 2830 – ALLAMBIE EVA
- 2 217 W J & H M BELTON, MERRICKS VIC 3916 – URILA DUCHESS

**Female, over 22 and not over 23 months**

- 3 216 KEITH & MOIRA SMITH, GOULBURN NSW 2580 – KEIMOI DAZZLE
- 4 215 MS CHRISTINE FELDMANIS, WNDPELLAMA NSW 2580 – WINDPELLAMA DOWNS WENDY

**Female, over 23 and not over 24 months**

- 5 230 MISS C E CHANDLER, TENNYSON NSW 2754 – ROTHERWOOD DELILAH
- 6 229 P & R MILLER & T BREUER, DUBBO NSW 2830 – ALLAMBIE CLAREVIEW

**Highly Commended:**

- 224 VICKI & PHILIP GILBERT, CANN RIVER VIC 3890 – ROTHERWOOD DESTINY
- 228 VICKI & PHILIP GILBERT, CANN RIVER VIC 3890 – ROTHERWOOD DREAM GIRL

**JUNIOR CHAMPION FEMALE**

Winner 222 P & R MILLER & T BREUER, DUBBO NSW 2830 – ALLAMBIE EVA

**Reserve Junior Champion Female**

Winner 206 MRS C & DR M NOEL, WINDSOR DOWNS NSW 2756 – SERENA DOWNS LADY ABIGAIL

**Female, over 24 and not over 25 months**

- 1 239 MRS S L FOUREUR, GLENCOE SA 5291 – KARLEE PARK DELTA DAWN
- 2 240 MR G TURNHAM, GISBORNE VIC 3437 – BARREGOWA DUSK



Senior and Grand Champion Bull, Yarra Ranges Jackeroo; John and Natarsha Canny, Yarra Ranges Stud, Yea, Vic.

- 3 241 STEBBINS ENTERPRISES PTY LTD T/A ARDROSSAN LOWLINE STUD, PRINCETOWN VIC 3269 – ARDROSSAN ONNA
- 4 232 MRS J M P SCHILLER, TOOWOOMBA QLD 4350 – LIK LIK DESTINY

**Highly Commended:**

- 231 MR P A LABRIE, JANDOWAE QLD 4410 – KOBBLEVALE QUEANBEYAN (ET)

**Female, over 24 and not over 30 months**

- (See explanatory note).
- 2 251 KEITH & MOIRA SMITH, GOULBURN NSW 2580 – KEIMOI CHRISTABEL
- 3 244 W J & H M BELTON, MERRICKS VIC 3916 – URILA DELIGHT

**Female, over 30 and not over 36 months**

- 4 243 MR P A LABRIE, JANDOWAE QLD 4410 – KOBBLEVALE SKYE (ET)

**Highly Commended:**

- 250 MRS G L MARANI, JILLIBY NSW 2259 MARAPARK CLOVER

**Female, over 36 and not over 48 months**

- 1 260 M HAYES, THORNTON QLD 4341 – VITULUS CHICKS RULE
- 2 265 J & D SAINSBURY, DUBBO NSW 2830 – ALLAMBIE PERFECT PRINCESS

**Female, over 48 months**

- 3 258 MR G & J HALLAM, THERESA PARK NSW 2570 – THE WINDMILL CECILIA
- 4 254 MRS C & DR M NOEL, WINDSOR DOWNS NSW 2756 – KEIMOI PRUDENCE

**Highly Commended:**

- 262 MS MARGARET SMITH, BOONAH QLD 4310 – KOUGARI CHAMPAGNE
- 1 266 K & G LORAINS, ZEERUST VIC 3634 – WHITBY FARM RUBY
- 2 267 K R & T L FALKENHAGEN, BOONAH QLD 4310 – TANVIEW BABY EVE

**Female, over 36 and not over 48 months**

- 3 269 MISS A M KUIPERS, MULGOA NSW 2745 – ASHDANVID ELIZABETH
- 4 268 MR P A LABRIE, JANDOWAE QLD 4410 – KOBBLEVALE VEE 'C'

**Female, over 48 months**

- 1 281 P & R MILLER & T BREUER, DUBBO NSW 2830 – ALLAMBIE MOONBEAM
- 2 293 MR G PODBURY, TYLDEN VIC 3444 – LILLIPUT DAME MARGO

**Highly Commended:**

- 3 290 MRS L P SENGER-WHITEHEAD, SHOREHAM VIC 3916 – COLOMBO PARK YAROSLAVNA
- 4 288 MRS C & DR M NOEL, WINDSOR DOWNS NSW 2756 – MONTE ALLEGRO ROBERTA

**Female, over 24 and not over 30 months**

- 5 283 MR P A LABRIE, JANDOWAE QLD 4410 – KOBBLEVALE TABITA (ET)
- 6 282 B A & B A HIGGINS, BUNDANOON NSW 2578 – TRUNGLEY SAPPHIRE

**Highly Commended:**

- 273 MRS PAULEEN SPACKMAN, WINGHAM NSW 2429 – TRALIN BLACK EMERALD
- 276 P & R MILLER & T BREUER, DUBBO NSW 2830 – ALLAMBIE JAZZMONT

**294 MRS J RISTROM, LANG LANG VIC 3984 – ELANDRA PARK EXOTIC (ET)**

**SENIOR CHAMPION FEMALE**

(See explanatory note).

**Reserve Senior Champion Female**

Winner 281 P & R MILLER & T BREUER, DUBBO NSW 2830 – ALLAMBIE MOONBEAM

**GRAND CHAMPION FEMALE**

(See explanatory note).

**Two Females, not over 20 months**

- 1 303 P & R MILLER & T BREUER, DUBBO NSW 2830
- 2 300 KEITH & MOIRA SMITH, GOULBURN NSW 2580

**Female, over 18 and not over 19 months**

- 3 302 W J & H M BELTON, MERRICKS VIC 3916

**Dam's progeny, 2 animals, either or both sexes**

- 1 318 MRS J RISTROM, LANG LANG VIC 3984 – TRANGIE J251

**2 321 MRS L P SENGER-WHITEHEAD, SHOREHAM VIC 3916 – MUGGA SABRINA**

**3 309 KEITH & MOIRA SMITH, GOULBURN NSW 2580 – BRAMBLETYE NUMIDA 2ND**

**Bull, 9 and not over 12 months.**

- 1 327 MRS J RISTROM, LANG LANG VIC 3984 – ELANDRA PARK ELVIS

- 2 325 MRS L P SENGER-WHITEHEAD, SHOREHAM VIC 3916 – COLOMBO PARK ENCORE
- 3 326 M HAYES, THORNTON QLD 4341 – VITULUS EXCEPTIONABULL

- 4 329 J & D SAINSBURY, DUBBO NSW 2830 – CASABLANCA JEBEL MUSA

**Bull, 12 and not over 14 months**

- 1 332 MR G PODBURY, TYLDEN VIC 3444 – LILLIPUT LORD ELLINGTON (ET)

**2 331 MRS L P SENGER-WHITEHEAD, SHOREHAM VIC 3916 – COLOMBO PARK EINSTEIN**

**3 330 MISS L A & L M KUIPERS, LONDONDERRY NSW 2753 ELLE KAY EXCALIBUR**

**4 334 MS E J BAKER, SOUTH MAROOTA NSW 2756 – HIDDEN VALLEY PINJARRA**

**Bull, 14 and not over 16 months**

- 1 335 P & R MILLER & T BREUER, DUBBO NSW 2830 – ALLAMBIE E DER JAZZMAN

**JUVENILE CHAMPION BULL**

Winner 335 P & R MILLER & T BREUER, DUBBO NSW 2830 – ALLAMBIE E DER JAZZMAN

**Reserve Juvenile Champion Bull**

Winner 327 MRS J RISTROM, LANG LANG VIC 3984 – ELANDRA PARK ELVIS

**Bull, over 16 and not over 18 months**

- 1 337 KEITH & MOIRA SMITH, GOULBURN NSW 2580 – KEIMOI DYNASTY

**2 336 INTERNATIONAL ANIMAL HEALTH PRODUCTS PTY LTD, SCHOFIELDS NSW 2762 – AUSBRED DYNAMITE**

**Bull, over 18 and not over 19 months**

- 1 342 VICKI & PHILIP GILBERT, CANN RIVER VIC 3890 – ROTHERWOOD DIABLO

**2 340 MR G PODBURY, TYLDEN VIC 3444 – LILLIPUT LORD DEAN**

**3 343 P & R MILLER & T BREUER, DUBBO NSW 2830 – ALLAMBIE DIAMOND BOY**

**4 341 MRS J M P SCHILLER, TOOWOOMBA QLD 4350 – LIK LIK DOUBLE OR NOTHING**

Continued on next page



### SYDNEY ROYAL EASTER SHOW

**Bull, over 19 and not over 20 months**  
 1 345 MR G & J HALLAM, THERESA PARK NSW 2570 – THE WINDMILL DONALD  
 2 344 STEBBINS ENTERPRISES PTY LTD T/A ARDROSSAN LOWLINE STUD, PRINCETOWN VIC 3269 – ARDROSSAN OLYMPUS  
**JUNIOR CHAMPION BULL**  
 Winner 342 VICKI & PHILIP GILBERT, CANN RIVER VIC 3890 – ROTHERWOOD DIABLO  
**Reserve Junior Champion Bull**  
 Winner 337 KEITH & MOIRA SMITH, GOULBURN NSW 2580 – KEIMOI DYNASTY  
**Bull, over 20 and not over 24 months**  
 1 348 INTERNATIONAL ANIMAL HEALTH PRODUCTS PTY LTD, SCHOFIELDS NSW 2762 – AUSBRED DOMINATOR  
 2 353 MR G TURNHAM, GISBORNE VIC 3437 BARREGOWA BENDIGO  
 3 346 P & R MILLER & T BREUER, DUBBO NSW 2830 – ALLAMBIE DYNAMITE  
 4 350 B A & B A HIGGINS, BUNDANOON NSW 2578 – TRUNGLEY KRYPTANITE  
**Bull, over 24 and not over 30 months**  
 1 360 NATARSHA & JOHN CANNY, MOLESWORTH VIC 3718 – YARRA RANGES JACKAROO  
 2 354 MRS C & DR M NOEL, WINDSOR DOWNS NSW 2756 – SERENA DOWNS CAPTAIN ARTHUR  
 3 356 B A & B A HIGGINS, BUNDANOON NSW 2578 – TRUNGLEY NUGGET  
 4 358 MR G & MRS D GUTHRIE, SHOREHAM VIC 3916 – COLOMBO PARK DVORAK  
**Bull, over 30 and not over 36 months**  
 1 363 VICKI & PHILIP GILBERT, CANN RIVER VIC 3890 – ROTHERWOOD CHEROKEE  
 2 365 G & J KNIGHT, MAJOR PLAINS VIC 3725 – SOUTHERN CROSS CASANOVA  
 3 366 P & R MILLER & T BREUER, DUBBO NSW 2830 – ALLAMBIE COMMIT  
 4 361 KEITH & MOIRA SMITH, GOULBURN NSW 2580 – KEIMOI KINSMAN

**SENIOR CHAMPION BULL**  
 Winner 360 NATARSHA & JOHN CANNY, MOLESWORTH VIC 3718  
 YARRA RANGES JACKAROO  
**Reserve Senior Champion Bull**  
 Winner 354 MRS C & DR M NOEL, WINDSOR DOWNS NSW 2756 – SERENA DOWNS CAPTAIN ARTHUR  
**GRAND CHAMPION BULL**  
 Winner 360 NATARSHA & JOHN CANNY, MOLESWORTH VIC 3718 – YARRA RANGES JACKAROO  
**Two Bulls, not over 24 months**  
 1 373 INTERNATIONAL ANIMAL HEALTH PRODUCTS PTY LTD, SCHOFIELDS NSW 2762  
 2 371 P & R MILLER & T BREUER, DUBBO NSW 2830  
 3 372 MRS L P SINGER-WHITEHEAD, SHOREHAM VIC 3916  
**Sire's Progeny, 3 animals representing both sexes**  
 1 377 P & R MILLER & T BREUER, DUBBO NSW 2830 – ALLAMBIE ARISTOCRAT  
 2 378 MRS L P SINGER-WHITEHEAD, SHOREHAM VIC 3916 – COLOMBO PARK TANNHAUSER  
 3 375 VICKI & PHILIP GILBERT, CANN RIVER VIC 3890 – ROTHERWOOD BOXER  
**Breeders Group, 3 animals, both sexes represented, bred and owned by exhibitor**  
 1 391 P & R MILLER & T BREUER, DUBBO NSW 2830  
 P & R MILLER & T BREUER, ALLAMBIE  
 2 381 MR G PODBURY, TYLDEN VIC 3444  
 MR G PODBURY, LILLIPUT LOWLINES  
 3 385 MRS C & DR M NOEL, WINDSOR DOWNS NSW 2756  
 MRS C & DR M NOEL, SERENA DOWNS  
**Explanatory note from ALCA Council:** The above results are the amended results from the Australian Lowline Feature Breed Show at the 2010 Sydney Royal Show as they appeared on the RAS website. Lilliput Lady Catherine, exhibited by Mr G Podbury,



LEFT: Juvenile champion female, Wanamara Goanna Opal; Greg and Julie Knight, Wanamara Stud, Major Plains, Vic.

RIGHT: Junior champion bull, Rotherwood Diablo; Philip and Vicki Gilbert, Rotherwood Stud, Cann River, Vic.



of Tylden, Victoria, no longer appeared as the winner of class 111 female over 24mths and not over 30mths, senior and grand champion female and supreme exhibit and winner of the Roger Barlow Perpetual Trophy. ALCA contacted the Royal Agricultural Society of New South Wales to request an explanation for the changes. This was their

reply: "Please be advised the RAS will not be able to provide any explanation for their decision. It is up to the Association to decide what they want to publish to their members." ALCA is extremely disappointed with the attitude shown by the RAS in not providing any explanation to support their actions. Your council is pursuing this matter.

## THE SADDLER'S COLLECTION



**The Saddler Diaries:** Beautifully handcrafted full leather diary – refillable A4 and A5 sizes. They are made to last.  
RRP A4: \$175 A5: \$145  
inc GST + \$7.50 P&H

**The Saddlers Travelling Pool Cue:** Ideal gift for the boys or 21st present. Made from quality WA Jarrah timber, presented in a beautiful leather bag made by the Saddler – create your own legend.  
RRP \$245  
inc GST + \$10 P&H



**The Saddlers Money Clip:** Cut from English saddle leather with logo on front – holds your banknotes in the middle with drivers licence and credit card pockets on front and back.  
RRP \$60 inc GST + \$5 P&H



**The Bit Bag:** This little number was the hit of the Brisbane Ekka. Beautifully crafted, made in Australia. Three colours available – tan, white, red. RRP \$245 inc GST + \$10 P&H



**The Saddler Wine Kit:** Add a touch of class to your drinks with this wine kit – includes corkscrew and bottle opener and comes complete in a Jarrah timber box with Saddler logo imprinted.  
RRP \$75 inc GST + \$10 P&H



**The Games Box:** Relax with this little box of fun, presented in beautiful Jarrah timber and embossed logo it comes complete with two packs of cards and dice.  
RRP \$45 inc GST + \$7.50 P&H

**The Music Box:** This beautiful Jarrah timber box keepsake plays Waltzing Matilda – one of our best loved songs. The ideal keepsake for the nostalgic gift.  
RRP \$45 inc GST + \$5 P&H

Orders to be accompanied by cheque, money order or credit card & remit to: Saddler Promotion Dept, OCL, PO Box 586 Cleveland Qld 4163

I enclose my cheque/money order for \$.....  
 or charge my Bankcard/Mastercard/Visa

Card no ..... Exp .....  
 Signature .....  
 Phone .....  
 Item ..... Qty .....  
 Item ..... Qty .....  
 Price \$ ..... P&H ..... Total \$ .....  
 Phone inquiries to Rachel Smith (07) 3826 8237

MAIL ORDER COUPON  
 Name .....  
 Address .....  
 Phone .....  
 Item ..... Qty .....  
 Item ..... Qty .....  
 Price \$ ..... P&H ..... Total \$ .....



# Royal Queensland

Royal Queensland Show  
(Ekka)  
August 5-14, 2010  
Next Show: August 11-20,  
2011.

- HEIFER, 8 MONTHS AND UNDER 12 MONTHS**
- 1 Pittsworth Electric, Pittsworth S H S
- 2 GVL Enya, KR & TL Falkenhagen
- 3 Kobblevale Isabella (ET), Kobblevale Enterprises
- HEIFER, 12 MONTHS AND UNDER 14 MONTHS**
- 1 Kobblevale Hazel, Cole Glen Stud
- HEIFER, 14 MONTHS AND UNDER 16 MONTHS**
- 1 GVL Effie, KR & TL Falkenhagen
- HEIFER, 16 MONTHS AND UNDER 18 MONTHS**
- 1 Pittsworth EQ, Pittsworth S H S
- 2 Kobblevale Essa, Cole Glen Stud
- HEIFER, 18 MONTHS AND UNDER 20 MONTHS**
- 1 Kobblevale Trenah, Kobblevale Enterprises
- 2 Tanview Delightful, KR & TL Falkenhagen
- JUNIOR CHAMPION HEIFER**
- Kobblevale Trenah, Kobblevale Enterprises
- RESERVE JUNIOR CHAMPION HEIFER**
- Pittsworth Electric, Pittsworth SHS
- HEIFER, 20 MONTHS AND UNDER 24 MONTHS**
- 1 Allambie Perfect Petal, KR & TL Falkenhagen
- 2 Kougari Dancing Queen, Margaret Smith
- HEIFER, 24 MONTHS AND UNDER 30 MONTHS**
- 1 Kobblevale Skye, Kobblevale Enterprises
- 2 Lik Lik Diamantina, JMP Schiller
- 3 Allambie Valentine, KR & TL Falkenhagen
- COW OR HEIFER, 30 MONTHS & UNDER 48 MONTHS**
- 1 Tanview Baby Eve, KR & TL Falkenhagen
- 2 Southern Cross Bellever, A Woodforde & C Burns
- SENIOR & GRAND CHAMPION COW OR HEIFER**
- Kobblevale Skye, Kobblevale Enterprises
- RESERVE SENIOR CHAMPION COW OR HEIFER**
- Allambie Perfect Petal, KR & TL Falkenhagen
- BULL, 8 MONTHS AND UNDER 12 MONTHS**
- 1 Kobblevale Ivan (ET), Kobblevale Enterprises
- 2 Goomburra Valley Mars, A Woodforde & C Burns
- BULL, 12 MONTHS AND UNDER 14 MONTHS**
- 1 Kougari El Toro, Margaret Smith
- BULL, 14 MONTHS AND UNDER 16 MONTHS**
- 1 Kougari Earthmover, Margaret Smith
- JUNIOR CHAMPION BULL**
- Kougari Earthmover, Margaret Smith
- RESERVE JUNIOR CHAMPION BULL**
- Kobblevale Ivan (ET), Kobblevale Enterprises
- BULL, 20 MONTHS AND UNDER 24 MONTHS**
- 1 Dunrossie Joseph, T & L Fisher
- 2 Kobblevale Quilpie, Kobblevale Enterprises
- 3 Lik Lik Double-or-Nothing, JMP Schiller
- BULL, 24 MONTHS AND UNDER 30 MONTHS**
- 1 Tanview DJ, KR & TL Falkenhagen
- BULL, 30 MONTHS AND UNDER 42 MONTHS**
- 1 Southern Cross Casanova, Nettle Creek Lowlines
- 2 Southern Cross Comet, A Woodforde & C Burns
- 3 Kougari Cromwell, Margaret Smith
- SENIOR & GRAND CHAMPION BULL**
- Tanview DJ, KR & TL Falkenhagen
- RESERVE SENIOR CHAMPION BULL**
- Southern Cross Casanova, Nettle Creek Lowlines
- PAIR OF FEMALES – ANY AGE**
- 1 Kobblevale Enterprises
- 2 KR & TL Falkenhagen
- 3 Cole Glen Stud
- BREEDERS GROUP**
- 1 Kobblevale Enterprises
- 2 KR & TL Falkenhagen
- 3 Margaret Smith
- GROUP OF THREE BULLS – ANY AGE**
- 1 Margaret Smith
- PROGENY STAKES GROUP**
- 1 Kobblevale Enterprises
- 2 Margaret Smith



Senior and Grand Champion Bull, Tanview DJ; Kenneth and Tanya Falkenhagen, Tanview, Boonah, Qld.



Senior and Grand Champion Female, Kobblevale Skye; Hugo, Philip and Lee LaBrie, Kobblevale, Jandowae, Qld.



Junior Champion Female, Kobblevale Trenah; Hugo, Philip and Lee LaBrie, Kobblevale, Jandowae, Qld.



Junior Champion Bull, Kougari Earthmover; Margaret Smith, Kougari, Ipswich, Qld.



# Royal Adelaide

Royal Adelaide Show  
September 3-11, 2010  
Next show: September  
2-10, 2011

- COW OR HEIFER, 10 MONTHS AND UNDER 16 MONTHS
- 1 148 P & S Foureur, Karlee Park, Erin Of The Glen
- 2 147 P & S Foureur, Karlee Park, Eugenie
- 3 146 P & S Foureur, Karlee Park, Ella
- COW OR HEIFER, 16 MONTHS AND UNDER 20 MONTHS
- 1 151 Lynda Senger-Whitehead, Colombo Park, Elektra ET
- 2 150 Yenolom Lowlines, Yenolom Ebony
- 3 149 Yenolom Lowlines, Yenolom Effe
- JUNIOR CHAMPION AUSTRALIAN LOWLINE COW OR HEIFER
- 1 151 Lynda Senger-Whitehead, Colombo Park, Elektra ET
- COW, 20 MONTHS AND UNDER 30 MONTHS
- 1 153 P & S Foureur, Karlee Park, Delta Dawn
- 2 152 Yenolom Lowlines, Yenolom Della
- SENIOR CHAMPION AUSTRALIAN LOWLINE COW
- 1 153 P & S Foureur, Karlee Park, Delta Dawn
- GRAND CHAMPION AUSTRALIAN LOWLINE FEMALE
- 1 151 Lynda Senger-Whitehead, Colombo Park, Elektra ET
- BULL, 10 MONTHS AND UNDER 16 MONTHS
- 1 155 Lynda Senger-Whitehead, Colombo Park, Encore
- 2 154 P & S Foureur, Karlee Park, Edinburgh
- JUNIOR CHAMPION AUSTRALIAN LOWLINE BULL
- 1 155 Lynda Senger-Whitehead, Colombo Park, Encore
- BULL, 20 MONTHS AND UNDER 30 MONTHS
- 1 157 P & S Foureur, Karlee Park, Desperado
- 2 158 Yenolom Lowlines, Karlee Park, Duntroon
- SENIOR CHAMPION AUSTRALIAN LOWLINE BULL
- 1 157 P & S Foureur, Karlee Park, Desperado
- GRAND CHAMPION AUSTRALIAN LOWLINE BULL
- 1 157 P & S Foureur, Karlee Park, Desperado
- SUPREME CHAMPION AUSTRALIAN LOWLINE EXHIBIT
- 1 151 Lynda Senger-Whitehead, Colombo Park, Elektra ET
- SIRE'S PROGENY GROUP
- 1 159 P & S Foureur
- BREEDERS' GROUP
- 1 160 P & S Foureur
- MOST SUCCESSFUL AUSTRALIAN LOWLINE EXHIBITOR
- 1 P & S Foureur



Junior and grand champion female Colombo Park Elektra; lynda Senger-Whitehead, Colombo Park, Shoreham, Vic.



Senior champion and grand champion bull Desperado; Peter and Sue Foureur, Karlee Park Lowlines, Glencoe, SA.



LEFT: Senior champion female Delta Dawn; Peter and Sue Foureur, Karlee Park Lowlines, Glencoe, SA.

RIGHT: Junior champion bull Colombo Park Encore; Lynda Senger-Whitehead, Colombo Park, Shoreham, Vic.





# Royal Melbourne

### HEIFER, 9 TO 12 MONTHS

- 1 WJ&HM Belton: Urtla Elza
- 2 WJ&HM Belton: Urtla Elle
- 3 Mrs S Herbig: Fairlawn Matilda
- 4 N&J Canny: Yarra Ranges Empress

### HEIFER, 12 TO 15 MONTHS

- 1 N&J Canny: Yarra Ranges Epiphany
- 2 G Podbury & B Crowley: Lilliput Dame Ellen
- 3 G&J Knight: Wanamara Kiss Me Quick
- 4 K&G Lorains: Whitby Farm Opal

### HEIFER, 15 TO 18 MONTHS

- 1 V&P Gilbert: Rotherwood Elegant Girl
- 2 G&J Knight: Wanamara Southern Star

### HEIFER, 18 TO 20 MONTHS

- 1 Mrs L Senger-Whitehead: Colombo Park Elektra (E.T)

### COW OR HEIFER, 24 TO 30 MONTHS

- 1 G&S Turnham: Barregowa Dusk
- 2 V&P Gilbert: Rotherwood Dream Girl
- 3 Miss M Croft: Rotherwood Destiny

### COW, OVER 30 MONTHS

- 1 G Podbury & B Crowley: Lilliput Dame Margo
- 2 Miss S Meszaros: Allambie Shine
- 3 N&J Canny: Monte Allegro zelma
- 4 Mr & Mrs A & J Ristrom: Elandra Park Contrast

### BULL, 9 TO 12 MONTHS

- 1 G Podbury & B Crowley: Lilliput Lord Eveready
- 2 Mr & Mrs A & J Ristrom: Elandra Park Edge

### BULL, 12 TO 15 MONTHS

- 1 G&J Knight: Wanamara Jack Daniel

### BULL, 15 TO 18 MONTHS

- 1 Mr & Mrs A&J Ristrom: Elandra Park Elvis
- 2 G&S Turnham: Barregowa Endeavour
- 3 G Podbury & B Crowley: Lilliput Lord Elroy
- 4 K&G Lorains: Whitby Farm Morgan

### BULL, 18 TO 20 MONTHS

- 1 G Podbury & B Crowley: Lilliput Lord Ellington (E.T)
- 2 Mrs L Senger-Whitehead: Colombo Park Einstein (E.T) (A.I)

### BULL, OVER 24 MONTHS

- 1 Mrs L Senger-Whitehead: Colombo Park

Royal Melbourne Show  
September 18-28, 2010  
Next Show:  
September 24-  
October 4, 2011

### Debussy

- 2 G Podbury & B Crowley: Lilliput Lord Dean
- 3 G&S Turnham: Barregowa Bendigo
- 4 V&P Gilbert: Rotherwood Cherokee

GROUP PRIZE: BEST THREE HEAD, ANY AGE, BOTH SEXES TO BE REPRESENTED AND ALL OWNED BY THE EXHIBITOR

- 1 Mr & Mrs A & J Ristrom:

- 2 G&S Turnham:

- 3 G Podbury & B Crowley:

SIRE'S PROGENY GROUP: BEST THREE HEAD, ANY AGE THE PROGENY OF ONE SIRE NOT NECESSARILY ALL OWNED BY THE EXHIBITOR

- 1 G&S Turnham: Group by Barregowa Lincoln
- 2 G Podbury & B Crowley: Group by Lilliput Lord

### Alkaloid

GROUP PRIZE: BEST TWO BULLS, TO BE BRED BY THE EXHIBITOR

- 1 K&G Lorains

- 2 V&P Gilbert

- 3 G&S Turnham

### JUNIOR CHAMPION HEIFER

- V&P Gilbert: Rotherwood Elegant Girl

### RESERVE JUNIOR CHAMPION HEIFER

- N&J Canny: Yarra Ranges Epiphany

### SENIOR CHAMPION COW

- G Podbury & B Crowley: Lilliput Dame Margo

### RESERVE SENIOR CHAMPION COW

- G&S Turnham: Barregowa Dusk



Senior Champion Female, Lilliput Dame Margo; Graeme Podbury and Bev Crowley, Lilliput Lowlines, Tylden, Vic.



Junior and Grand Champion Female and Supreme Exhibit, Rotherwood Elegant Girl; Philip and Vicki Gilbert, Rotherwood, Cann River, Vic.

### GRAND CHAMPION FEMALE

- V&P Gilbert: Rotherwood Elegant Girl

### JUNIOR CHAMPION BULL

- Mr & Mrs A&J Ristrom: Elandra Park Elvis

### RESERVE JUNIOR CHAMPION BULL

- G&J Knight: Wanamara Jack Daniel

### SENIOR CHAMPION BULL

- Mrs L Senger-Whitehead: Colombo Park Debussy

### RESERVE SENIOR CHAMPION BULL

- G Podbury & B Crowley: Lilliput Lord Dean

### GRAND CHAMPION BULL

- Mr & Mrs A&J Ristrom: Elandra Park Elvis

### SUPREME EXHIBIT

- V&P Gilbert: Rotherwood Elegant Girl

### MOST SUCCESSFUL EXHIBITOR, PROVIDING THERE ARE THREE OR MORE EXHIBITORS

- G Podbury & B Crowley.



Junior and Grand Champion Bull, Elandra Park Elvis; Andrew and Jane Ristrom, Elandra Park, Lang Lang, Vic.



Senior Champion Bull Colombo Park Debussy; Lynda Senger-Whitehead, Colombo Park, Shoreham, Vic.



# Canterbury

Canterbury Show  
November 10-12,  
2010  
Next show:  
November  
9-11, 2011



Senior Champion Female and Supreme Champion, Woolstone Park Black Mirage with heifer calf at foot; Philip and Kay Worthington, Woolstone Park Lowlines, Rangiora, New Zealand.

**COW WITH OR WITHOUT CALF AT FOOT – THREE YEARS AND OVER**  
1 Woolstone Park Black Jewel – P A & K I Worthington  
2 Woolstone Park Black Bonanza – P A & K I Worthington  
**COW, WITH OR WITHOUT CALF AT FOOT – 2 YEARS**  
1 Woolstone Park Black Mirage – P A & K I Worthington  
2 Ashmore Montana – G R & D A Guthrie  
3 Woolstone Park Black Barina – P A & K I Worthington  
**CHAMPION SENIOR FEMALE**  
Woolstone Park Black Mirage – P A & K I Worthington  
**RESERVE CHAMPION SENIOR FEMALE**  
Woolstone Park Black Jewel – P A & K I Worthington  
**HEIFER JUNIOR YEARLING**  
1 Woolstone Park Glentui – P A & K I Worthington  
2 Ashmore Jemima – G R & D A Guthrie  
3 Woolstone Park Summerlea – P A & K I Worthington

**CHAMPION YEARLING HEIFER**  
Woolstone Park Glentui – P A & K I Worthington  
**RESERVE CHAMPION YEARLING HEIFER**  
Ashmore Jemima – G R & D A Guthrie  
Bull two years and over  
1 Woolstone Park Black Statesman – P A & K I Worthington  
2 Woolstone Park Black Cadillac – P A & K I Worthington  
**CHAMPION SENIOR BULL**  
Woolstone Park Black Statesman – P A & K I Worthington

**RESERVE CHAMPION SENIOR BULL**  
Woolstone Park Black Cadillac – P A & K I Worthington  
Bull Senior Yearling  
1 Woolstone Park Ranfurly – P A & K I Worthington  
**BULL JUNIOR YEARLING**  
1 Woolstone Park Richmo P A & K I Worthington  
2 Woolstone Park Lobum – P A & K I Worthington  
**CHAMPION YEARLING BULL**  
Woolstone Park Richmo P A & K I Worthington

**RESERVE CHAMPION YEARLING BULL**  
Woolstone Park Lobum – P A & K I Worthington  
**SUPREME CHAMPION LOWLINE**  
Woolstone Park Black Mirage – P A & K I Worthington  
**TWO YEARLINGS, ANY SEX, BRED BY EXHIBITOR, JUDGED AS A PAIR**  
1 Woolstone Park Lowlines – P A & K I Worthington  
2 Woolstone Park Lowlines – P A & K I Worthington  
3 Woolstone Park Lowlines – P A & K I Worthington  
**GROUP, BULL AND TWO FEMALES, ANY AGE**  
1 Woolstone Park Lowlines – P A & K I Worthington  
**TWO ANIMALS BY ONE SIRE OR ONE DAM**  
1 Woolstone Park Lowlines – P A & K I Worthington  
2 Woolstone Park Lowlines – P A & K I Worthington  
3 Woolstone Park Lowlines – P A & K I Worthington  
**BEEF ALL BREEDS**  
Pair of Yearlings owned by one exhibitor  
2 Woolstone Park Lowlines  
**CANTERBURY BEEF YOUTH SHOW**  
8 students entered from Rangiora High-School with Woolstone Park Lowlines  
**BEEF JUNIOR HANDLERS, AGED UNDER 17 YRS**  
5th – Amber Millward  
6th – Stephanie Whitehouse  
**BEEF JUNIOR HANDLERS, 17 & UNDER 24YRS**  
2 Georgia Davies  
**INTER-SCHOOL JUNIOR BEEF HERDSPERSON AND PARADERS COMPETITION**  
1 Rangiora High School  
2 Rangiora High School

# ROYAL PERTH

**FEMALE BORN BETWEEN 1/1/2009 AND 31/12/2009**  
1 David & Stacey Collins, Harcourt Lowline Stud (Harcourt Minippa)  
2 David & Stacey Collins, Harcourt Lowline Stud (Harcourt Rocket)  
**JUNIOR CHAMPION FEMALE**  
1 David & Stacey Collins, Harcourt Lowline Stud (Harcourt Minippa)  
**FEMALE BORN ON OR BEFORE 31/12/2009**  
1 David & Stacey Collins, Harcourt Lowline Stud (Harcourt Junipa)  
2 David & Stacey Collins, Harcourt Lowline Stud (Harcourt Solitaire)  
**SENIOR CHAMPION FEMALE**  
1 David & Stacey Collins, Harcourt Lowline Stud (Harcourt Junipa)  
**GRAND CHAMPION FEMALE**  
1 David & Stacey Collins, Harcourt Lowline Stud (Harcourt Junipa)

Royal Perth Show  
September 3-11,  
2010  
Next show: October  
1-8, 2011



LEFT: Junior champion female Harcourt Minippa, David and Stacey Collins, Harcourt Lowline Stud, Wongamine, WA.

RIGHT: Grand Champion Female – judges Lachlan James (NSW) and Alan Wilson (SA), sash senior and grand champion female and small breed interbreed supreme champion female of the Royal Perth Show, Harcourt Junipa, presented by David Collins, Harcourt Lowline Stud, Wongamine, WA, and held by Emma Boyd, Esperance Senior High.





## MERCHANDISE



Lowline caps: \$15.

## Cover yourself ... with Lowline merchandise

DVDs of the Sydney Royal Easter Show are available for \$25 (including GST and postage). To order your Lowline merchandise, email Paul Phillips at: paulphillips@unwired.com.au or contact the Lowline office at ABRI: lowline@abri.une.edu.au



Lowline breed vests: \$50.



Lowline badges: \$5.



Lowline stubbie holders: \$6.



Lowline travel mugs: \$12.



Lowline keyrings: \$5.

**VALLEY VIEW**  
LOWLINE STUD

*Stud and Commercial  
Lowline Breeders*

Greg & Margaret Omond  
600 Running Creek Rd  
Arthurs Creek  
Victoria, 3099

1542894

**Rancho  
Radiata Stud**

Christine & David Clee  
348 Mahurangi West Road  
RD3 Warkworth Northland  
**(09) 422 0492**  
cleedavid@gmail.com

1542898

**Compak Black  
Stud**

M Harnett & K McDowell  
PO Box 767  
Palmerston North, 301  
**Bus: (06) 358 3543**  
**A/H: (06) 357 4976**  
harnett@clear.net.nz

1542895

**Margaret Park  
Lowline Stud**

*"Where Quality  
Meats the Market"*

637 Undullah Rd  
Allenview, Qld 4285  
Via Beaudesert  
Ph: (07) 5543 1486  
Mobile: 0408 516 425  
lynellfisher@bigpond.com

1542843

**Kobblevale  
Artificial Breeding**

- AI programmes
- Flushing programmes
- Embryo implanting – our recip's or yours
- Semen collected

**Contact: Phil Labrie**  
**(07) 4668 5852**  
kobblevale@wideband.net.au

1542878

**Fairymount  
Fine Foods**

- Gourmet Lowline Beef
- MSA graded for quality assurance
- Also Lowline Salami, Pastrami and Biltong

*We can deliver Australia wide*

**Contact: Phil Labrie**  
**(07) 4668 5852**  
kobblevale@wideband.net.au

1542878

**Casablanca  
Stud**

J Sainsbury  
148 Kauri Crescent  
RD1 Kumeu  
**+64 9 412 2341**  
lowline@casablanca.co.nz

1542899

**KARLEE PARK  
LOWLINES**

*Broad ribbon winners*

**Stock for Sale**

**Sue & Peter Foureur**  
Glencoe West, SA  
(08) 8739 4174  
0407 251 041  
psfoureur@internode.on.net

1542700

**Lik Lik  
Lowlines**

Jacqui and Colin Schiller  
PO Box 230  
Cambooya, Qld 4358  
**(07) 4634 3047**  
**0419 686 254**  
colin.schiller@bigpond.com

1542827

**Ashmore  
Stud**

**GR & DA Guthrie**

729 Methven Highway  
RD6, ASHBURTON  
Ph: +64 3 302 4964  
gguthrie@xtra.co.nz

1542888

**LOWLINE  
BREEDERS DIRECTORY**

To place your advertisement  
in the next issue of

**LOWLINE JOURNAL**

**Contact Jane Lowe**  
**Phone (07) 4633 9904**  
**Email: jane.lowe@ruralpress.com**

1544987





# Lowlines blitz Brisbane

**T**HE grand champion bull and female from the Royal Queensland Show's powerful Australian Lowline section stormed to double triumph with both grands in the small interbreed judging.

Interbreed champions were selected by a panel of three small breeds judges, Stephen Hayward on Lowlines, Englishman David Martin on Dexters and Margo Hayes on Miniature Galloways, Miniature Belted Galloways and Miniature Greys.



LEFT: Reece Clark, Gympie, walks past Lowline judge, Stephen Hayward, Advance Charolais, Allora, with Kougari Estee.



ABOVE: Class 11 winner in the Lowline 20 months and under 24 months, Allambie Perfect Petal, which is owned by Tanya and Kenneth Falkenhagen, Tanview Lowlines, Boonah. Pictured here with handler Sam Bochow.



Kim Burns and Debby Woodforde of Goomburra Valley Lowlines, co-owners of Goomburra Valley Mars.



Rebecca Janke, Pittsworth State High School, with Pittsworth EQ.

RIGHT: Genevieve McAulay, Rabobank, Brisbane, presents the reserve champion junior heifer ribbon to Pittsworth Electric, and handler Sandy-Lea Riehl, Pittsworth State High School.



**KIWI** 

**LOWLINE BREEDERS DIRECTORY**

### Compak Black Stud

M Harnett & K McDowell  
PO Box 767  
Palmerston North, 301  
**Bus: (06) 358 3543**  
**A/H: (06) 357 4976**  
harnetti@clear.net.nz

### Casablanca Stud

J Sainsbury  
148 Kauri Crescent  
RD1 Kumeu  
**+64 9 412 2341**  
lowline@casablanca.co.nz

### Ashmore Stud

G & DA Guthrie  
729 Methven Highway  
RD6, Ashburton  
**+64 3 302 4964**  
gguthrie@xtra.co.nz

### Rancho Radiata Stud

Christine & David Clew  
348 Mahurangi West Road  
RD3 Warkworth Northland  
**(09) 422 0492**  
clew david@gmail.com

1944983



# Melbourne Show all 'Elegant'

**A**N extraordinary heifer rose from the ranks to nab supreme Australian Lowline exhibit at this year's Melbourne Royal.

RIGHT: Vicki Gilbert, Rotherwood, Cann River, at the Melbourne Royal. Rotherwood secured grand champion female and supreme exhibit with their heifer entrant.



The 15-month-old winning female, Rotherwood Elegant Girl, claimed junior and grand champion female, before going on to be awarded the top award by judge Corey Ireland, Kyeamba, NSW.

Exhibitors Vicki and Phil Gilbert, Rotherwood, Cann River, expressed genuine shock at the results against a large line-up of 44 entries.

"To win against the cow and calf and then to go on to win supreme is amazing," Mrs Gilbert said. "We are very surprised, but we knew she had it in her."



ABOVE LEFT: Handler Ali Hilli holds the supreme Australian Lowline exhibit, Rotherwood Elegant Girl. Pictured at rear (from left) are associate judge Jake Taylor and judge Corey Ireland, beside the owners of the winning animal, Vicki and Phil Gilbert.

ABOVE: Sisters Monica Meszaros, 10, and Sarah, 18, Meszline Lowline stud, Agnes, Banks, NSW, hold Allambie Shine and seven-week-old calf Sharny.

LEFT: Gavin Croft, Iron Ridge, Windsor, NSW, with daughter Brooke, 10 and son Luke, 13, with their heifer and cow (with calf at foot).



RIGHT: Nartasha and John Canny, Yarra Ranges Lowlines, Molesworth, at the Melbourne Royal.

LEFT: Chris Noel, Serena Downs, Windsor Downs, NSW, enjoys a break after showing.



# We've got you covered



## ALCA announces great new general insurance partnership with FERME – for all your general insurance needs

- Special offer for you and financial benefit to ALCA on many insurance policies placed through FERME.
- 13 months' insurance for 12 months' premium (for qualifying products) if you register your interest by 30 June 2011.
- Professional discreet advice on your insurance needs and 24/7 specialist claims support from business and agricultural insurance specialists.

FERME are experts in business, agricultural and domestic insurance. As authorised representatives of CGU Insurance, they have support from Australia's largest regional and rural insurer.

The new partnership between ALCA and FERME enables you to gain access to one of the FERME insurance professionals, all of whom have many years insurance experience.

FERME's Paul Griffin is the key contact point and he and his team are ready to assist you to review not only your farm insurance but any other insurance needs you may have, such as business insurance, insurance for property investments or professional and public liability.

ALCA has established an arrangement providing a special 13 months' insurance for 12 months' premium offer to you and financial support back to ALCA for most insurance policies placed through this partnership before 30 June 2011.

To access this great new membership benefit and qualify for the 13 month for 12 months' premium offer, contact FERME on (02) 9290 7450 or register on the ALCA website today.

- Business Insurance
- Agricultural Insurance
- Domestic Insurance
- Office
- Farm
- Home and Contents
- Commercial Investments
- Farm Motor
- Private Motor
- Commercial Motor
- Livestock
- Travel
- Cargo
- Crop
- Landlords Home
- Public Liability
- Seasonal Fire
- Boat
- Professional Indemnity

Contact us now for a free appraisal of your insurance needs – simply go to the ALCA website or call FERME on (02) 9290 7450.



Insurer  
CGU Insurance Limited  
ABN 27 004 478 371

# ✓ ITULUS LOWLINE STUD

"Small Cattle with a **BIG** Steak in the Future"

## LEADING THE BREED IN CARCASS COMPETITIONS

- 2010: Champion Heavyweight Carcass Warwick Hoof & Hook
- 2009: Grand Champion Carcass Royal Brisbane Show
- 2007: Grand Champion Carcass Royal Brisbane Show
- 2006: 1st MSA Eating Quality Awards Royal Brisbane Show
- 2005: 1st Light Weight Warwick Hoof & Hook Competition

## LEADING THE WORLD IN LOWLINE EXPORT

- 2010: First shipment embryos & semen to Italy
- 2009: Second shipment of embryos to England
- 2008: Siring Grand Champion Bull and Female. Denver. Colorado. USA.
- 2008: Second Shipment of live cattle to Thailand
- 2006: First Shipment of live cattle to Thailand
- 2006: First shipment of embryos to England and Ireland
- 2005: Australian Record for semen rights to the USA
- 2003: First shipment of semen to Thailand

## SHOWING A SAMPLE OF OUR UNBEAT-A-BULL RECORD

- 2009, 2008, 2006 Grand Champion Female Royal Brisbane Show
- 1999-2006, Grand Champion Bull Royal Brisbane Show
- 2007, 2006, 2005, 2002, 2000 Royal Toowoomba Show Grand Champion Bull & Female

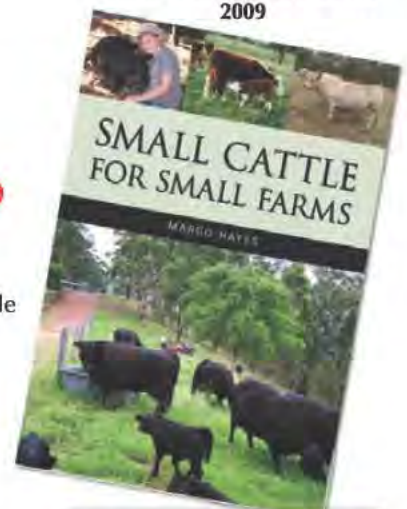
## OFFERING MUCH MORE THAN GREAT CATTLE

**Our website is a complete resource centre with everything from gestation calendars, commercial cattle, scientific data, meat production, events, semen lists, course dates and lots lots more.**

- 'Small Cattle for Small Farms' Best seller, and now in its second print, published by CSIRO. Presented in a unique format with lots of practical tips covering everything from behaviour, husbandry, nutrition, infrastructure, marketing and showing to Government regulations.
- **Small Cattle Care & Management Course:** Practical on-farm beginners guide to becoming involved with cattle. Held monthly.



Grand Champion Carcass  
2009



1536405

**Margo Hayes: 221 Mulgowie Rd. Thornton. Laidley. Qld. 4341  
Ph: 0413 153754 Email: margo@lowline.com.au**

**www.lowline.com.au**