



Australian Lowline Cattle Association Inc.  
Website: [www.lowlinecattleassoc.com.au](http://www.lowlinecattleassoc.com.au)

E-mail: [office@lowlinecattleassoc.com.au](mailto:office@lowlinecattleassoc.com.au)

## Happy Holidays

Another year is ending and many of us are very pleased to see the end of it. But who knows what 2022 will bring.

Your ALCA Council is making plans for new projects for the coming year.

The NSW Promotion Group is asking for NSW members to participate in a brief survey so they can find where members want the promotion to focus. Member input is needed so please take time to participate because the results will be to your benefit.

Educating members has been identified as a major need in our association as many of our membership are new to cattle, farming and the beef industry.

The ALCA Newsletter always includes items of interest to assist in this area so take time to read and follow up with research of your own. There are plenty of places to find information online these days. Let me know what you would like to see in the newsletters next year. And send in your photos and articles.

The ALCA Council wish all members and families a very Happy Christmas and a safe New Year.  
Best wishes

Julie Knight  
ALCA President



### Inside This Issue

Happy Holidays	1
ALCA Office Holiday Dates	1
Chemvet Newsletter – Cattle management this season	2
School's In At Wanamara Farm	2
Year Letter for 2022 is T	2
Best Practice Pain Relief in Cattle	3/4
Welcome to New Members	5
Testimonials Needed	5
Virtual Beef Show, Canterbury, NZ	6
Let's Talk Lowline	7
Cattle Structure – the Shoulders	7
CAPA Beef Youth Day	8
2022 Royal Melbourne Show – Australian Lowline Feature	9
Flashback – 2000 Royal Melbourne Show	9
2022 Royal Canberra Show	9
2022 Toowoomba Royal Show	9
2022 Royal Sydney Easter Show	9

## ALCA Office Holiday Dates

The ALCA Office will be closed for Christmas the close of business **on Friday 17<sup>th</sup> December & will reopen on Tuesday 4<sup>th</sup> January 2022.**

Your Executive Officer, Katrina McKemey will be available from 4<sup>th</sup> January 2021.

The ALCA Registrar, Claudia Scott will be available until 20<sup>th</sup> December and will return on Tuesday 11<sup>th</sup> January 2022.

A big 'Thank You' to Katrina & Claudia for all their work throughout the year.

NOTE: Please allow a 2 week turnaround for registrations once DNA/PV results and payment have been submitted to the office.

This is important to remember following the Christmas break.



## Chemvet Newsletter - Important information for cattle management this summer

Dear Clients

Predictions in our last newsletter for persistent rainfall throughout summer into next autumn, in virtually all pastoral areas, has so far come to fruition. The good news being pastoral conditions will remain strong throughout this period. However, the bad news is, parasites will really require managing.

Worms, especially in weaner cattle and sheep, are going to be an issue throughout this period through to early winter next year. Therefore, sound worming programs, combining good strategic grazing management along with correct drench selection and timing of drenching, are going to be really important.

Setting up 'clean' paddocks to calve and lamb onto next year is going to be problematic and will require thought and action now and throughout the rest of the summer and autumn. For relatively clean paddocks with low worm burdens to be available to lamb and calve down, the message here is prepare now and do not leave things to the last minute.

Likewise, flystrike and tick seasons are going to be problems over an extended period. Sound management strategies, including applying the correct chemicals at the correct time, again will be super important if troubles with these parasites are to be avoided. It is very likely that the shorter acting fly prevention products commonly used in the new year are not going to last through to the end of the flystrike season.

Chemvet's product range has been extended again. The Fluazuron based Tickmaster and Tickmaster Plus Ivermectin for the strategic control of cattle tick is currently under production and should be available mid to late December.

On behalf of everyone at Chemvet I would like to thank you for supporting us throughout 2021 and wish you all a very happy and safe Christmas and New Year.

Kind regards  
Murray and the team at Chemvet

*(Editor: Thanks to Jeanette Stebbins for sharing this newsletter with us)*

## School's in at Wanamara Farm



For the past three years, 1<sup>st</sup> year Agriculture students from the Melbourne University Dookie College Campus, have been using Wanamara Farm for a session of their Animal Production Course.

Their visits have covered the topic of beef cattle production at our farm and Australian Lowlines have been their focus. It gives the students a wider understanding of the beef cattle industry which includes breeds other than mainstream Angus.

The students are instructed on cattle breeding techniques, animal husbandry, pasture management, steer production and farm biodiversity.

A professional video of Wanamara Farm covering all these topics has been produced to be used with tutorials for students in the future.

*Julie Knight  
Wanamara Farm*

# Year Letter for all calves born in 2022 will be the letter

# T



## Best Practice Pain Relief in Cattle

This e-Booklet is a must-read for all cattle producers. With changes regulations concerning the management of pain relief for many common practices, it is now very important to follow *the Cattle Code of Ethics* regulations & use appropriate pain relief for common animal husbandry practices, eg. Castration & Freeze Branding.

By Meat & Livestock Australia (MLA)

Complete Booklet can be downloaded through this link - [pain relief | Meat & Livestock Australia \(mla.com.au\)](http://painrelief.meatandlivestock.com.au)

### INTRODUCTION

This booklet is a resource to achieve the outcomes and requirements of the *Australian Model Code of Practice for the Welfare of Animals: Cattle*, 2nd Edition – hereafter referred to as ‘The Cattle Code’. ‘The Cattle Code’ documents agreed standards of animal welfare; all those handling cattle should be aware of, and comply with, ‘The Cattle Code’ to ensure they meet their responsibilities and duty of care requirements under the various state and territory animal welfare legislations.

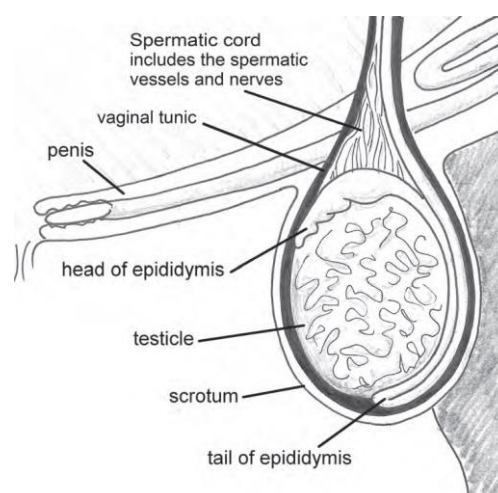
Information on the relationship between ‘The Cattle Code’ and legislation is contained in Appendices A and C. Relevant excerpts from ‘The Cattle Code’ are contained in each section of this booklet, and are repeated in Appendix A.

Currently, if the procedures covered in this booklet are performed at the specified ages, there is no legal requirement for the use of anaesthesia or analgesia. If the procedures are carried out on older animals, the use of anaesthetics and analgesics by or under the direction of a veterinarian is recommended, and mandatory in some cases. While it is presently not logistically or economically feasible to routinely use anaesthetics and analgesics, this may change in the future as better techniques become available.

After extensive consultation with a wide range of interested parties, this ‘best practice’ booklet provides practical, easy-to-follow advice.

*The following Chapters relate to procedures that are common practice with Australian Lowline cattle in Australia.*

<b>1. Some basic principles of surgery and wound healing</b>	<b>1</b>
Before surgery	1
During surgery	1
After surgery	2
<b>2. Branding</b>	<b>3</b>
What is branding?	3
Why brand?	3
When to brand	3
Facilities and equipment	4
How to brand	6
<b>3. Castrating</b>	<b>8</b>
What is castration?	8
Why castrate?	8
When to castrate	8
Facilities and equipment	8
The bull's reproductive anatomy	10
Anatomical abnormalities	11
How to castrate	12
Surgical castration – using a blade	12
Non-surgical castration with Elastrator® ring	16
Non-surgical castration with a Burdizzo®	18
What after-care is required?	19



## Best Practice Pain Relief in Cattle cont.

### Key messages when branding and castrating

#### General

- Be mindful of the animal's health and welfare at all times.
- Be aware of the requirements of 'The Cattle Code' and of your particular state/territory legislation – refer to Appendix C.
- Perform all procedures with cattle as young as possible.
- Minimise stress to the animal by:
  - quiet, calm mustering and handling
  - ensuring access to water before and after the procedures
  - minimising the time that cows and calves are separated
  - doing the procedures in the coolest part of the day
  - releasing cattle from yards as soon as possible, into a shaded, grassed holding paddock with access to water
  - avoiding wet, humid weather, and dusty conditions.
- Use adequate numbers of well-trained and experienced staff, and good planning and process – brand, then castrate, then dehorn.
- Ensure cattle have adequate protection against tetanus.
- Good hygiene is essential – always wash hands and instruments, keeping separate containers with antiseptic for washing hands and storing instruments, and change antiseptic after every 15–20 calves.
- Inspect animals daily for 10 days after castrating or dehorning to check for complications such as infection and fly-strike, and provide appropriate treatment if necessary
  - consult your veterinarian.

#### Branding

- Good restraint is essential – use a cradle for calves and a squeeze crush for older cattle.
- Ensure branding irons are well maintained and heating equipment is adequate to reach and hold the required temperature.
- Hot branding – irons must be at the correct temperature
- Never brand wet, weak or emaciated cattle.

#### Castration

- To minimise pain and stress to the animal and the resultant production loss, always castrate calves as young as possible.
- Good restraint is essential – use a calf cradle.
- Change antiseptic solution and replace scalpel blades after every 15–20 calves.
- Do not castrate an animal unless two normal, freely moving testicles can be palpated in the scrotum – otherwise, consult your veterinarian

#### Occupational Health & Safety

- Get well organised, and plan the process well in advance.
- Use well-designed and maintained yards and equipment, especially the calf cradle.
- Handle cattle quietly and calmly, and be especially aware of the risk of kicks from calves in a calf cradle.
- Always make castration cuts **away** from the hand.
- Work in the coolest part of the day, for the welfare of both the operators and cattle.
- Ensure vaccinations of staff for Q Fever and tetanus are up to date.
- Keep dust to a minimum, and avoid contact with cattle blood, urine and other fluids to minimise risk of Q Fever and Leptospirosis.
- Wear gloves when handling hot branding irons.

## Welcome to New Members

We welcome the following new members to our Association & our Australian Lowline family. It is great to see so many new members from New Zealand in the past month.

### **Full Membership**

KB & AJ Walker  
Cambridge, Waikato, NZ – RIVERMONTE

Therese Norman  
Doon Doon, NSW – ORGANTIC

Tabitha Cooper  
Clinton, Otago, NZ – ASHLEY DOWNS

### **Lifestyle Membership**

Warren & Suzanne Reid  
Kaukapakapa, Auckland, NZ – OBSERVATORY HILL

Elias Khoury  
Penrose, NSW – FLORENCER

### **Commercial Membership**

Jocelyn Smith & Alan Smith  
Quorrobong, NSW

### **School Membership**

Rangiora High School Farm  
Rangiora, NZ – WHAKATIPU



## Testimonials Needed



A few years ago, testimonials were collected and collated in PDF form to put on the ALCA website for members to download and print to use in the promotion of their cattle.

These testimonials were from people who have used Australian Lowline bulls over beef and dairy herds and from those who have eaten Lowline beef or have processed it.

It is time for the testimonials to be updated.

Do you sell Australian Lowline bulls to dairy or beef farmers to use over heifers?

What have your customers said about the Lowline bulls?

Have they produced low birthweight calves?

Have calving problems been solved in the herd?

Will they continue using a Lowline bull?

Do you sell your Lowline beef to family or friends?

Ask them to give you an opinion of your beef – how good was it?

Were they happy with the taste and flavour?

Would they buy it again?

Have you purchased and eaten Lowline beef?

What did you think of the beef?

Ken Lorains would like members to send in any testimonials to him so these can be updated – [kenlorains57@gmail.com](mailto:kenlorains57@gmail.com)



## Virtual Beef Show, Canterbury, NZ

We had a busy day here at Woolstone yesterday. Because the NZ Agricultural Show is not going ahead – thanks to Covid – we are running (by we, I mean the Canterbury A&P Assn which owns the NZ Agricultural Show) a Virtual Beef Show. This involves three still photos – front side and rear – plus a 30-45 second video of the animal being led. We had all but one of our Rangiora High School cattle handling team here, plus a couple from Oxford who are also regularly in the team, and a young lad who has joined this year after his Mum read about the HS team (he is actually home schooled). We also had two of the team's past members, and the fiancé of one who also now shows with us, here to help. It went off pretty well and the entries are now in.



The really exciting part of it all for the youngsters was that the Canty A&P has gained a 1-hour slot on TV 1 (for you in Aust that is a leading channel screened nationwide) to boost the showing movement and keep contact with the general public.



They chose to include our cattle preparation and video-taking in this programme, which will screen on TV1 on 12 DEC at 11am and then it will be on TVNZ on Demand and The NZ Ag Show online show site. This meant we had a crew of three – camera man, sound lady, and director, plus a well-known TV front person, Ali Pugh – here for about four hours yesterday. It might mean only four minutes in the hour programme will actually be here, but I know the film team was very impressed with the youngsters, interviewed several of them face to face (as well as Kay and I individually) and also miked up the others when they were leading. They will have a lot of footage and audio.

Photos show our mob after the afternoon was finished; Ali Pugh helping to prepare our senior bull, Woolstone Park Kauri; Ali interviewing young Fletcher Fawcett (13 and home schooled); and Kay taking the video of the heifer and calf on the ring we had to mow so that the judges can get a good look at feet.

A lot of fun ! 😊

Philip Worthington  
Woolstone Park



## Let's Talk Lowline

Are you on Facebook?

Would you like to find out more about the Australian Lowline breed and what other cattle breeders are doing?

Have you joined the Australian Lowline Cattle Discussion Group?

This is the place to share photos, stories & funnies about what is happening in the Lowline world.

You don't have to be a 'stud' breeder. All you need to do is look and join in. There are plenty of interesting and educational posts and you can leave comments too. It is a very friendly environment to be involved with.

Perhaps you can share photos of your new calves or the beef you have just had packaged from your steer.

Or you might be looking for information about what type of cattle yards you should look at buying to suit your Lowlines or maybe, what is the best way to wean your calves.

There are plenty of experienced cattle breeders in the group as well as plenty of cattle newbies, so you will find many members who can assist you with your queries.

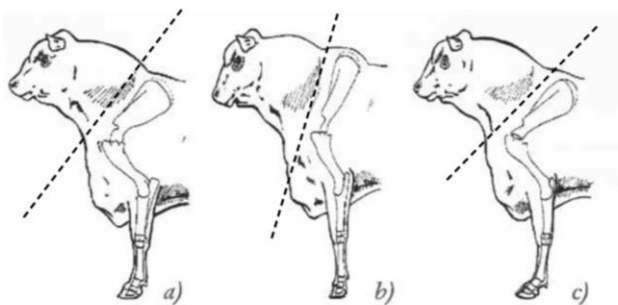
So why don't you join the Discussion Group.

Don't forget to answer the simple questions and agree to the group rules when you apply to join up.



## Cattle Structure - the Shoulders

**Shoulders:** The shoulders are naturally sloping. A slope of 45-60 degrees is considered acceptable. A beast whose shoulder blade is tipped forward (straight shouldered) has less angle at the shoulder joint and elbow joint. This reduces the shock-absorbing ability of these front joints.



**Front leg and shoulder structure of the bull**  
a) Correct b) Too straight c) Too much angle

The shoulder should lie smoothly against the rib cage. Bulls whose shoulders are wide at the point of the shoulder (the base of the neck) or wide between the shoulder blades (when observed from above) may throw heavily-shouldered calves. This increases the chance of calving problems.

Have you wondered why some of your cattle walk with their heads down?

Or what is meant by the comment – 'breeding bulls need to have smooth shoulders so they don't cause calving problems'.

Good structure is something all cattle breeders should aim for with their breeding and the SHOULDERS are an important part of this equation.



## CAPA Beef Youth Day, NZ

The weather gods did not get the memo about the Canterbury A & P Association's Beef Youth Day, normally part of the New Zealand Agricultural Show, but the show must go on – and it did.

The super Sarah's organised the event held at Woolstone, the Fernside farm of Philip and Kay Worthington, on November 27.

Sarah O'Connell ran the organisation and points collation with Sarah Heddell judging in the ring. This meant Sarah O got to sit under cover in the haybarn beside the ring while Sarah H had to brave the elements with the competitors.

In the end the weather wasn't too bad and the haystack provided a brilliant impromptu grandstand. Fifteen young competitors, ranging from 9 to 19, took part in three age groups in cattle parading, beef stock judging and angora goat judging.

*Kay Worthington  
Woolstone Park*



## Australian Lowline Feature Show - 2022 Royal Melbourne Show

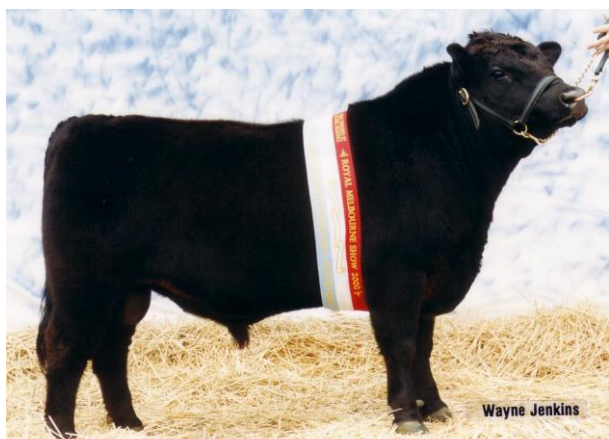
It will be a matter of 'third time lucky' for the Royal Melbourne Show in 2022. After cancellations in 2020 & 2021, it is hoped the show next year will proceed.

As originally planned, Australian Lowlines will be the Feature Breed so preparations are underway to make this show one to remember.

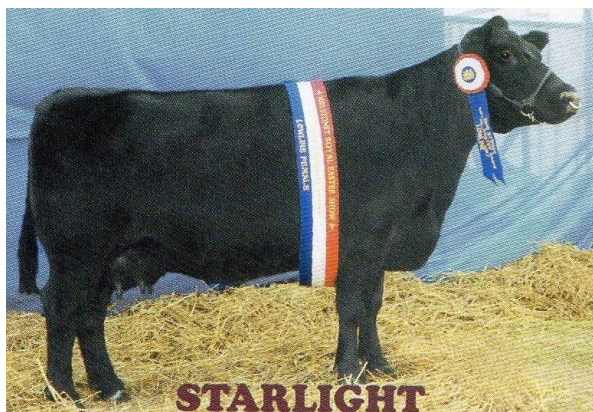
Dates are still to be confirmed but the show is held at the end of September so add it to your diary.

It might be a great opportunity for overseas members to plan a trip 'down under' if Covid travel restrictions are lifted.

### Flashback - 2000 Royal Melbourne Show - Australian Lowline Feature



Junior & Grand Champion Bull – Ardrossan Findon  
Owners: Julie & Greg Knight, Wanamara



Senior & Grand Champion Cow – Broken Arrow Starlight  
Owners: Jane & Andrew Ristrom, Elandra Park

## 2022 Royal Canberra Show

Entries are now open for the Royal Canberra Show to be held from Friday 25<sup>th</sup> February to Sunday 27<sup>th</sup> February 2022.

**Entries Close: 29<sup>th</sup> January 2022**

<https://www.rncas.org.au/rncas-ausmectin-cattle-show.html>

## 2022 Toowoomba Royal Show

The Toowoomba Royal Show is to be held from Friday 25<sup>th</sup> April to Sunday 27<sup>th</sup> April 2022.

**No further details are available as yet.**

<https://www.toowoombashow.com.au/royal-show/schedule/>

## 2022 Royal Sydney Easter Show

Entries are now open for the Royal Sydney Show to be held from 8<sup>th</sup> April to 19<sup>th</sup> April 2022.

**Entries Close: 16<sup>th</sup> February 2022**

<https://www.rasnsn.com.au/sydney-royal-competitions/competitions/cattle/key-dates--schedule/>

