

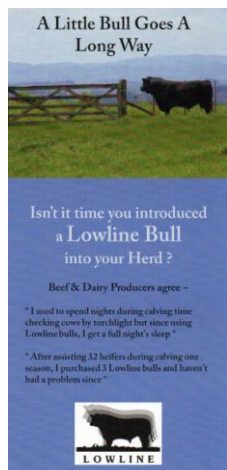
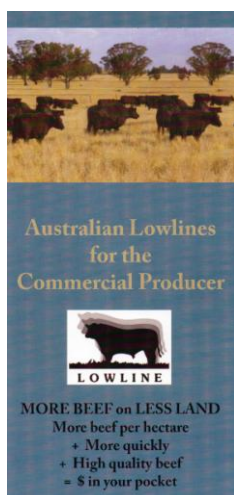


Australian Lowline Cattle Association Inc.  
Website: [www.lowlinecattleassoc.com.au](http://www.lowlinecattleassoc.com.au)

E-mail: [office@lowlinecattleassoc.com.au](mailto:office@lowlinecattleassoc.com.au)

## Promotional Material

ALCA has available for all members 5 promotional DL flyers that have been designed to attract buyers for your cattle and your Lowline beef.



### Inside This Issue

Promotional Material	1
2018 Canberra Show Results	2/3
Practical Biosecurity for Purchasing Beef Cattle	4
DNA Testing – what you need to know	5
Black Label Lowlines – selling to ‘Char Char Char’	6
Allflex Tissue Sampling Unit (TSU)	7
Kiwi at Canberra Show	8
2018 Royal Sydney Show judging	8
National Livestock Assurance (LPA) Program	9
2018 Pittsworth Show results	10
25 <sup>th</sup> Anniversary Book	10

These flyers have been produced for the benefit of our members to promote their cattle & their studs or businesses.

They are great promotion to give to visitors to your farm or for people enquiring about your Lowlines.

If you are going to a local show or field event, take some flyers to give out.

So please take advantage of this offer & order some for yourselves.

Available FREE to members & can be ordered through the ALCA Shop – all you have to pay is minimal postage.

Got to the ALCA website

[www.lowlinecattleassoc.com.au](http://www.lowlinecattleassoc.com.au)

=> MEMBERSHIP => SHOP to put in an order

or go directly to

[www.lowlineshop.com](http://www.lowlineshop.com)



## 2018 Canberra Show Results



Canberra Show winning bulls - Rotherwood Maelstrom, Platinum Park The Red Baron & Rotherwood Masterpiece with Vicki Gilbert & Matt Cooney

The Royal Canberra Show was held from 23rd – 25th February, 2018 at Exhibition Park in Canberra.

An impressive line-up of Australian Lowlines from New South Wales & Victoria were exhibited before the judge, Stuart Glover.  
Congratulations to all who participated.

### **BULLS**

**Bull, 12 – 16 mths**

- 1<sup>st</sup> Rotherwood Maelstrom – Vicki Gilbert
- 2<sup>nd</sup> Whitby Farm P.T – Ken & Gill Lorains
- 3<sup>rd</sup> Serena Downs Nutcracker –  
Christine & Michael Noel

**Bull, 16 – 20 mths**

- 1<sup>st</sup> Serena Downs Magnitude –  
Christine & Michael Noel
- 2<sup>nd</sup> Ardeen Laviathan – Alexie & Steve O'Brien

**Junior Champion Bull:**

Rotherwood Maelstrom – Vicki Gilbert

**Reserve Junior Champion Bull:**

Serena Downs Magnitude –  
Christine & Michael Noel

**Bull, 20 – 24 mths**

- 1<sup>st</sup> Rotherwood Masterpiece – Vicki Gilbert

**Bull, 24 – 30 mths**

- 1<sup>st</sup> Tarrawarra Eclipse – Jacqui Feagan

**Bull, 30 – 36 mths**

- 1<sup>st</sup> Platinum Park The Red Baron – Vicki Gilbert
- 2<sup>nd</sup> Cann Valley Momentous –  
Megan McNamara & Garry Urquhart

**Senior Champion Bull:**

Rotherwood Masterpiece – Vicki Gilbert

**Reserve Senior Champion Bull:**

Platinum Park The Red Baron – Vicki Gilbert

**Grand Champion Bull:**

Rotherwood Masterpiece – Vicki Gilbert

**Pair of Bulls**

- 1<sup>st</sup> Rotherwood Maelstrom & Rotherwood  
Masterpiece – Vicki Gilbert

### **FEMALES**

**Heifer, 8– 12months**

- 1<sup>st</sup> Rotherwood Number One Girl– Vicki Gilbert
- 2<sup>nd</sup> Cann Valley Nefertiti Girl – Matt Cooney
- 3<sup>rd</sup> Ardeen Mystique – Alexie & Steve O'Brien

**Heifer, 12 – 16 mths**

- 1<sup>st</sup> Rotherwood Nova Girl – Vicki Gilbert



## 2017 Canberra Show Results cont.

Heifer, 16 – 20 mths

- 1<sup>st</sup> Tarrawarra Fantasia – Jacqui Feagan
- 2<sup>nd</sup> Tarrawarra Faith – Jacqui Feagan
- 3<sup>rd</sup> Shadow Park Magnolia – Gorman Family

**Junior Champion Heifer:**

Tarrawarra Fantasia – Jacqui Feagan

**Reserve Junior Champion Heifer:**

Rotherwood Number One Girl – Vicki Gilbert

Female, 30 months & over

- 1<sup>st</sup> Cann Valley Lunar Eclipse – Matt Cooney
- 2<sup>nd</sup> Whitby Farm Lovely – Ken & Gill Lorains
- 3<sup>rd</sup> Serena Downs Jingle Bells –  
Christine & Michael Noel
- 4<sup>th</sup> Whitby Farm Diamond – Alexie & Steve O'Brien
- 5<sup>th</sup> Shadow Park Zoom Zoom – Gorman Family

**Senior Champion Cow:**

Cann Valley Lunar Eclipse – Matt Cooney

**Reserve Senior Champion Cow:**

Whitby Farm Lovely – Ken & Gill Lorains

**Grand Champion Female:**

Cann Valley Lunar Eclipse – Matt Cooney

Pair of Heifers under 24 months

- 1<sup>st</sup> Rotherwood – Vicki Gilbert

Sires or Dams Progeny

- 1<sup>st</sup> Rotherwood – Vicki Gilbert

Breeders Group

- 1<sup>st</sup> Rotherwood – Vicki Gilbert

**Supreme Exhibit – Rotherwood Masterpiece**

– Vicki Gilbert



Reserve Senior Champion Female – Whitby Farm Lovely  
& calf Whitby Farm Handsome



Junior Champion Heifer – Tarrawarra Fantasia



Reserve Junior Champion Heifer – Rotherwood  
Number One Girl



Senior & Grand Champion Female –  
Cann Valley Lunar Eclipse



# Practical Biosecurity for Purchasing Beef Cattle

## Livestock Biosecurity Network

**By Dr Pat Kluver, Livestock Biosecurity Network Manager Biosecurity & Extension**

We employ biosecurity practices to reduce the risk of every day threats from endemic diseases and, just as importantly, from rare but costly exotic disease incursions.

By far the greatest threat of introducing disease is the purchase of cattle. Which diseases are important to you will depend upon your operation, the availability of low risk cattle and the market you are supplying.

For instance, Johne's disease (JD) may not be as important to a trading operation compared to a breeding operation.

These threats can be reduced with simple practices that are easy to implement, inexpensive and the payoff is ongoing and cumulative.

The best approach to purchasing cattle can be broken down into three phases; **pre-farm gate, receival and on-farm**. It's as much about stopping the spread as it is its entry to the farm.

**Pre-farm gate** is where we do all preliminary checks to make sure that the cattle we are buying are healthy and unlikely to be carrying any disease that may affect the rest of your herd.

Check the [National Herd Health Declaration](#) for information on disease status and previous treatments including vaccinations for clostridials and lepto (7 in 1), drenches.

Check all cattle look healthy. Pestivirus carrier animals are usually, but not always, poor doers and look less than healthy. They usually die before two years of age.

The Australian beef industry introduced a new, [national approach to JD in cattle](#) in 2016. Make sure you're across the new risk profiling tools like Johne's Beef Assurance Score (J-BAS) – the higher the score the lower the risk. If you're buying bulls, pestivirus antigen negative is a must along with history of vibrio vaccination.

**Receival** is when we do all preventative treatments as cattle enter the farm.

All cattle get a quarantine drench to remove resistant worms with a mixture of three different actives and then allowed to clean out for 48–72 hours in the yards if possible.

If they have come from a fluke area then a combination drench with Triclabendazole should also be used. Any other health treatments that are required should be given now, such as vaccinations or trace element supplementation.

Once **on-farm** keep the new arrivals separate from the rest of the herd for a period of at least a month to ensure they are healthy.

The quarantine paddock should not allow nose to nose contact with the rest of the herd so should be separated with a laneway or shelter belt. At this stage any illness or death should be investigated by a vet.

This is by no means an exhaustive list of disease management recommendations.

For a more comprehensive approach, download the biosecurity planning tool from our website [www.lbn.org.au](http://www.lbn.org.au) or visit the Farm Biosecurity website.

To bolster biosecurity on your farm, download the free Farm Biosecurity app.

Dr Pat Kluver is one of LBN's Biosecurity & Extension Managers.



## DNA Testing - what you need to know

As you will be aware, there have been recent changes with DNA testing which is now causing confusion for members.

ALCA Council will be discussing options over the next few months & members will be informed.

**At the moment, there are now 2 ways to DNA & PV your animals – the usual MiP testing or the newer process of SNP testing.**

**Both processes will be acceptable by ALCA for the registration of Lowline cattle.**

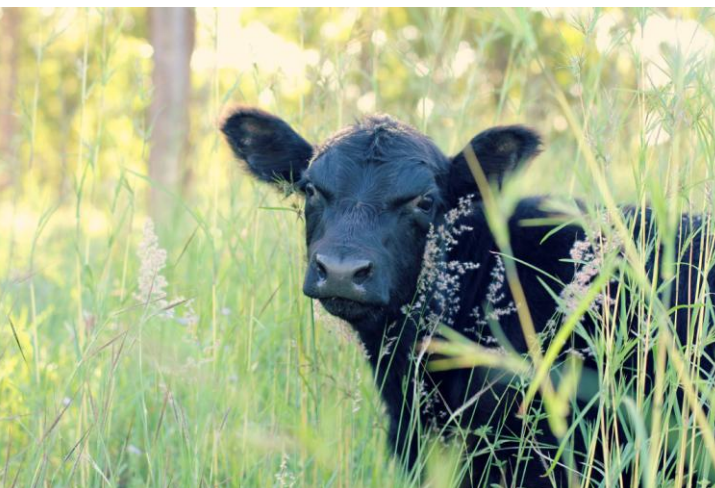
It seems that due to new technology, the DNA processing laboratories will eventually be changing over to the new SNP testing but this will happen over the next few years & not immediately.

In the early days of ALCA, Blood typing was used to process DNA for our Lowlines but as technology improved, this process was changed to the testing we use today – MiP testing.

So changes have been successfully made in the past & any changes in the future will be taken slowly to make the transition as easy as possible for members.

If you are unsure of what you should do, contact Carole Johns at the ALCA office or one of your Councillors.

At the moment there is no right or wrong way to have your DNA processed, it is up to your personal preference.



### NEOGEN

The University of Queensland Animal Genetics Laboratory was purchased by American company Geneseek last year. Geneseek has now changed the name of this part of their business to NEOGEN.

So any DNA & Parent Verification processed at the University of Queensland Laboratory will be done by NEOGEN.

As soon as new DNA forms are available from NEOGEN, Carole will email to members.

NEOGEN will be phasing out the process of MiP testing over the next 3 years. MiP testing is what we have been using for our usual DNA & PV testing up until now, using tail hair samples.

The newer & more accurate testing process called SNP testing will eventually replace the MiP tests for DNA & PV.

It can be done by taking a tissue sample from the ear or by tail hairs (as long as the tail hair sample is clean with no faecal matter).



### ZOETIS

Some members are using ZOETIS for their DNA & PV.

ZOETIS will continue to offer the usual MiP tests as well as the newer SNP testing & have no plans to phase out the MiP testing at the moment.

But they have told Carole that as the older machinery breaks down they will no longer be able to get parts for repair so the newer SNP testing process will eventually take over. This is not expected within the next 5 years though.



## Black Label Lowlines - selling beef to 'Char Char Char' Melbourne's first Low & Slow Butcher Shop



Black Label Lowline principals, Craig Davis & Sue Pace, of Coimadai in Victoria, have every right to be proud of this review of their AUSTRALIAN LOWLINE BEEF by Esilio Benedetti, proprietor of 'Char Char Char'. Congratulations !

-----  
We are very proud to be getting these sort of reviews of our beef and so happy that our beef is being appreciated for what it is. Huge thanks to Glenn, Maria and Luke at Char Char Char and to the Wolfpack.  
Great cookup and Pics Esilio.

*Craig Davis*  
*Black Label Lowlines*

When you get such a good quality product, there is no need to do anything but add some salt and pepper and chuck it on the bbq. A lowline beec tomahawk from Mr Craig Davis, a small farm producer cut by the team at #charcharcharbutcher sprinkled with black sea salt and green peppercorn. Reverse seared to a rare temp then scorched on Sputnik2. Sliced finely and plated along side a Vietnamese/Lebanese fusion of Fatoush salad. Healthy, tasty and homely.

*Esilio Benedetti*  
*'Char Char Char'*  
*Melbourne*



I just had one of the greatest steak moments of my life. Australian Lowline sourced by the best butchers in Australia. Char Char Char!

*Betsy the BBQ*



## Allflex Tissue Sampling Unit (TSU) - for DNA SNP testing

If you decide to change to SNP DNA testing, this Allflex Ear Tagger is designed to take a tissue sample when the NLIS or NAIT tag is applied to the ear of your cow.

The following information can be found on the Allflex website –

<https://www.allflex.com.au/our-products/tissue-sampling/product/tissue-sampling-unit-tsu>

Are you looking for a quick and easy DNA sampling method that is reliable, easy to transport, user-friendly and efficient to process at the lab?

Allflex Tissue Sampling Units (TSU) provide all of this and much more. These units take an ear punch which can replace tail hair, blood, semen or other sample types used for DNA, Pestivirus or other serology testing.



TSU Applicator

**Fast, high performance sample collection.** Samples can be collected in seconds with minimal animal restraint. A single-squeeze motion collects a sample with minimum distress to the animal.

**Clean, uncontaminated sampling.** The genetic material is sealed in a specially designed preservative.

**Minimise retesting.** Tissue samples contain a large quantity of high quality DNA for genetic analysis, yielding excellent lab results.

**Sample integrity.** The TSU is fully sealed and positively identified with both a 2D barcode and ID panel. The TSU can be paired to matching NLIS and Management tags, creating an absolute sample-to-animal linkage.



Tube loading apparatus & cutter



TSU with a sample

**The following laboratories are currently accepting TSU for animal health diagnostics and genomic testing.**

NSW DPI Diagnostic & Analytical Services

Swans Veterinary Services

Geneseek Australasia (NEOGEN) / UQ Gatton

Zoetis Genetics Australia



## Kiwi at Canberra Show



Hard on the heels of her Lowline scholarship from New Zealand's Canterbury Show to attend the 2017 Royal Brisbane Show at the Ekka, Georgia Rhodes has just completed another cattle scholarship trip to Australia.

Georgia, 18, attended the Royal Canberra Show as a representative for the Canterbury A&P Association.

She competed in the open age group handlers where she placed second leading a Hereford called Princess.

Across the age groups 289 young handlers competed.

In the stock judging she was called in the top six in her age group to speak on the microphone.

This trip was the Lady Diana Isaac Scholarship which is one of the Premier Youth Awards at the Canterbury Show.

Georgia says she spent a whole day washing cattle for Canberra exhibitors which was a great way to get to know people. She also did time as a steward with 200 heifers in the ring at once. The class numbers were an eye-opener, being much higher than in New Zealand.

Georgia also headed back to Queensland on her journey to catch up with friends she made last year when Pittsworth High School and the South Qld Lowline Promotion Group hosted her at the EKKA.

She attended the Milmerran Show with Ebony Lowlines, experiencing a Queensland country show. She brought home ribbons from that show also with third in paraders and second in judging.

Georgia started her cattle showing with the Rangiora High School team at Woolstone Park Lowlines in 2013 and has been a regular handler with Woolstone since then.

*Philip Worthington  
Woolstone Park*

## 2018 Royal Sydney Easter Show

**Lowline judging will be on Friday 23<sup>rd</sup> March – time to be advised**

Lowline studs from New South Wales & Victoria will be exhibiting their cattle so please come along and show your support.

This is also a great opportunity to meet & chat to ALCA members you might normally not have contact with.....and see some great Lowline cattle!



Sienna Smith (Red Lily Lowlines) with Lily & Ella Falkenberg (Quartz Hill Lowlines) at 2017 Royal Sydney Show





## Livestock Production Assurance (LPA) Program

Being a cattle producer, either stud or commercial, requires a number of processes & paperwork in order to buy & sell your cattle. This is regulated by Meat & Livestock Australia (MLA)

Australia has the Livestock Production Assurance (LPA) Program which is the industry's on-farm assurance program covering food safety, animal welfare and biosecurity. It provides evidence of livestock history and on-farm practices when transferring livestock through the value chain.

### PIC Number

Each property with livestock needs a Property Identification Code (PIC).

A PIC is an 8-character code used to identify a property in the National Livestock Identification System (NLIS).

You must have a PIC to move cattle on & off your property.

### NLIS Tags

These ear tags are individual identification tags for each animal born on a property, unique to the property of origin (with the PIC number) & registered on the National Livestock Identification System database. The **NLIS tags** are used to track movement of cattle from property to property.

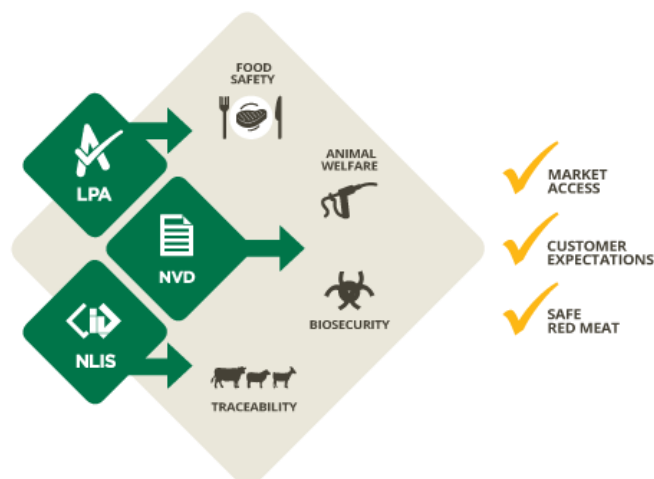


### NVDs

In Australia, National Vendor Declarations (NVDs) are required for all cattle when they are sold &/or transported to or from your property.

NVDs are incorporated with NLIS tags when cattle NLIS tags are moved on or off properties on the NLIS database.

Further information can be found on – <https://www.mla.com.au/meat-safety-and-traceability/red-meat-integrity-system/about-the-livestock-production-assurance-program>



**If you purchase cattle you need to make sure of the following –**

If you are buying any livestock, do you have a Property Identification Code (PIC) for where they will be kept? This is a legal requirement even if you only have one animal.

If you are buying cattle are they correctly tagged with National Livestock Identification Scheme (NLIS) tags?

Is the vendor providing you with accurate NLIS paperwork to ensure you can correctly transfer the animals from their property to yours?

Do the NLIS numbers on the paperwork match the numbers on the eartags in the animals' ears?

**Other things to consider when buying livestock is their history.**

If you are buying cattle, ask the vendor to provide a **National Herd Health Statement**. This is a legal document that provides additional health information with respect to pests and diseases such as Johne's disease, Enzootic Bovine Leucosis, pestivirus, and cattle ticks.

It also details health treatments carried out within the previous six months such as drenching, vaccinations, and treatments for external parasites such as lice.

Health statements are freely available from the Farm Biosecurity website [www.farmbiosecurity.com.au](http://www.farmbiosecurity.com.au)



## 2018 Pittsworth Show, QLD

The 2018 Pittsworth Show was held on 9–10 March.

Five studs attended: Vern Park Lowlines, Lik Lik Lowlines, Sunrise Lowlines, Pittsworth State High School, Ebony Lowlines – 11 head

The judge was Mr Donald Patch

### Class 3000 Bull 6mths & under 12mths

1<sup>st</sup> – Lik Lik Notorious (C & J Schiller)

### Class 3100 Bull 12mths & under 16mths

1<sup>st</sup> – Vern Park Nero (Jamie & Susan Smith)

2<sup>nd</sup> – Lik Lik Maximus (C & J Schiller)

### Class 3200 Bull 16mths & Under 20mths

1<sup>st</sup> – Pittsworth Model (Pittsworth State High)

### Junior Champion Bull: Vern Park Nero

(Jamie & Susan Smith)

Reserve Junior Champion Bull: Lik Lik Notorious  
(C & J Schiller)

### Class 3400 Bull 2yrs & Over

1<sup>st</sup> – Vern Park Legacy (Jamie & Susan Smith)

### Senior & Grand Bull: Vern Park Legacy

(Jamie & Susan Smith)

### Class 3500 Female 6mths & Under 12mths

1<sup>st</sup> – Pittsworth Naraji (Pittsworth State High)

2<sup>nd</sup> – Lik Lik Necessity (C & J Schiller)

### Class 3600 Female 12mths & under 16mths

1<sup>st</sup> – Pittsworth Modem (Pittsworth State High)

2<sup>nd</sup> – Alycam Midnight (Wendy & Travis Caesar)

3<sup>rd</sup> – Sunrise Milan (Christina Schiller)

4<sup>th</sup> – Lik Lik Midori (C & J Schiller)

### Class 3950 Female 30mths & Over

1<sup>st</sup> – Alycam Lucerne (Wendy & Travis Caesar)

### Senior & Grand Champion Female: Alycam Lucerne

(Wendy & Travis Caesar)

### Class 3998 Supreme Interbreed Exhibitors Group

3<sup>rd</sup> – C & J Schiller (Lik Lik Lowlines)

*Christina Schiller  
Sunrise Lowlines*

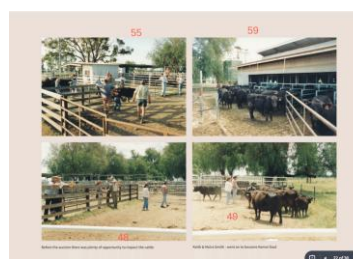
## 25<sup>th</sup> Anniversary Book

Preparations began for this Anniversary Book in June 2017. Sandra Price & I have put in hundreds of voluntary hours collecting & collating information, photos & documents to include, & not forgetting the emails & phone calls looking for information.

There has been so much important information collected, much previously unknown to most of us. It is now being collated into the book which will be the printed history of the association for future reference. This book will not only be a historical view of the association and the breed, it should be used as a marketing tool to promote Australian Lowlines.



It will be visually appealing, full of information and stories about the breed and the people who breed Lowlines, making it an interesting read to the wider public as well as past & present members.



Due to the volume of work involved, the collation of this anniversary book has taken longer to prepare than first expected. Final preparations for publication are now underway.

You will be able to pre-order your copies shortly. The book will be for sale through the Lowline Shop – ALCA website => SHOP or direct from [www.lowlineshop.com](http://www.lowlineshop.com)

We would like to thank all the contributors – without your photos & stories this book would not have begun.

*Julie Knight*

