



Australian Lowline Cattle Association Inc.  
Website: [www.lowlinecattleassoc.com.au](http://www.lowlinecattleassoc.com.au)

E-mail: [office@lowlinecattleassoc.com.au](mailto:office@lowlinecattleassoc.com.au)

## ALCA Newsletter

The ALCA Newsletter has been running for over 12 months now & I hope members are enjoying the various articles, member stories, show results & other information that make up each issue.

The newsletters are produced to keep members up-to-date with what is happening in the Lowline world & I hope it is beneficial.

A big 'Thank You' to everyone who has shared their stories, ideas, photos and articles. We love to hear from you so keep sending them in.

Julie Knight

[wanamara@westnet.com.au](mailto:wanamara@westnet.com.au)

### Inside This Issue

Lowline Social Media	1
Lowline News on the Web	1
Welcome to the latest member of the Lowline family	2
Welcome to our New ALCA Members	2
A New Approach to Johnes Disease (JD)	3
What does this mean to Lowline Breeders?	3
Do You have a Farm Biosecurity Plan?	4
Showtime in Queensland – Ridgeland & Yeppoon	5
2017 Rockhampton Show results	6/7
2017 Royal Melbourne Show – Entries Open	8
2017 Toogoolawah Show results	8/9
Pioneer Valley Show, Qld	9
ALCA Facebook Features	10
Beware – Grass Tetany	10
Triplet Bull Calves born in Illowa, Vic.	11
Certified Lowline Beef Poster	11

## Lowline News on the Web

Whether you like it or not, Social Media plays a big part in everyone's lives these days.

Lowline news on the internet is everywhere!

The **ALCA website** is a great place to start your search for Lowline information, is where you can track cattle pedigrees, look for cattle for sale & much more.

[www.lowlinecattleassoc.com.au](http://www.lowlinecattleassoc.com.au)

You may have noticed that there's a new Lowline page on Facebook –

**Australian Lowline Cattle Discussion Group**

If you'd like to have the opportunity to discuss all things Lowline whilst getting to network with other breeders and Lowline-addicts-in-the-making then this is the link for you

<https://www.facebook.com/groups/179549385908692/>

The Lowline Discussion page has been created to compliment the **Australian Lowline Cattle Association** page which can be found here

<https://www.facebook.com/AustralianLowlineCattleAssociationInc/>

So keep an eye on these pages and you'll be kept up to date with the happenings and maybe even learn some new tricks or a bit of information you didn't know.

And if that's still not enough for you, then yes we have more! You can find us on **Instagram** too.



Join the herd on

**Instagram**

@australianlowlinecattle

So if you have an Instagram account then please follow us and we can follow you.

Let's get the word out about our fabulous breed of cattle the Australian Lowline !

See more on Page 10



## Welcome to the newest member of the Lowline Family



A big congratulations to Emma & Jason Germany on the arrival of their beautiful son, Thomas Barrymore Germany on 5<sup>th</sup> June 2017.

He is the long awaited brother for excited big sisters, Megan & Pattie.

Blue Jem Lowlines now has another cattle handler to help Mum & Dad. We will look forward to seeing the Blue Jem team back in the show ring in the future.



Timitch Hill Bakari , 11 yrs old, with  
Brandon Beck- such a gentle bull!

## Welcome to New Members

ALCA would like to welcome our latest new members from Australia, New Zealand & USA.

John & Helen Pearce (Commercial Membership)  
Echuca, Vic.

Kathleen Smith (Full Membership)  
Goochland, VA, USA. – Hickamore Hill

Tania Paget (Full Membership)  
The Summit, Qld – Platinum Park Lowlines

Randy & Rebecca Miller (Full Membership)  
Delmar, NY, USA. – Lime Kiln

Andrew & Jodie Loughnan (Full Membership)  
Modewarre, Vic. – Lauriston Park Lowlines

Pauline & Lui Teder (Full Membership)  
Sarina, Qld. – Talking Trees Lowlines

Nick & Briony Vial Partnership (Full Membership)  
Havelock North, Hawke's Bay, NZ – Mokoepka

Nigel Shanks & Jonny Rudduck (Full Membership)  
Maungaturoto, Nth Island, NZ. –Oakridge Lowlines

Tony Freeman & Louise Livingstone  
Upper Barron, Qld. (Commercial Membership)

Toby & Nia Noble-Webb (Youth Membership)  
Dysart, Tas. – The Basin Lowlines

Bryce Barker (Full Membership)  
Berthoud, CA, USA. – Star View Farm



## A New Approach to Johnes Disease (JD)

### What is Johnes Disease

JD is an incurable bacterial infection that may cause serious wasting and chronic diarrhoea in cattle. It also affects sheep, goats, camelids and deer in Australia.

JD in cattle is caused by the bacterium, *Mycobacterium paratuberculosis*, which lives mainly in animal intestines, but can survive in the outside environment for several months. Affected animals lose weight & eventually starve to death.

Cattle infected with JD excrete the bacteria in their manure. The bacteria contaminate pasture and watercourses, spreading infection to other cattle sharing the same paddocks or yards.

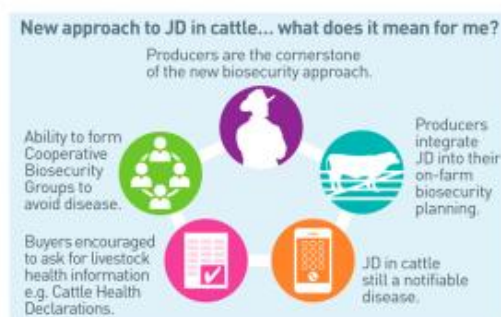
### Transition from JD CattleMAP

The Australian Johnes's Disease Market Assurance Program for Cattle (CattleMAP) is now transitioning to alternative industry assurance systems. This outcome follows a review of CattleMAP, undertaken by Herd Health P/L. The new arrangements for CattleMAP participants is the final step in the wider BJD Review process.

The JD in Cattle Framework is now in the implementation phase. A previous JD Status of MN1, 2, 3 or Beef Only will no longer be recognised & will be replaced by a JD Beef Assurance Score known as a J-BAS Score

For further information contact your local Cattle Vet, your state Department of Agriculture Or

<https://www.animalhealthaustralia.com.au/jd-cattle-tools/>



### What does this mean to Lowline Breeders?

A Biosecurity Plan is not only to help stop the transfer of Johnes Disease from property to property, it will also assist in the control of other livestock diseases.

It will assist in the control of the spread of weeds and other pasture contaminants as the farmer will become more aware of who comes and goes from his property and the precautions to take to lower the risk of weed spread.

**If you plan to show cattle in any national shows you will now be required to have a J-BAS score of 6 or higher. J-BAS 7 & 8 require a Cattle vet to 'sign-off' on your paperwork.**

You can do a Biosecurity Plan online that will give you a J-BAS score of 6 which does not require a vet signature.

If you need to have a Biosecurity Plan of J-BAS 7 or 8 you will need to contact your Cattle Veterinarian.

You do not need to send your Farm Biosecurity Plan anywhere. It should be carefully filed so that it can be produced if you have declared on a National Cattle Health Declaration that your herd is J-BAS 6, 7 or 8. A potential purchaser could ask to see your Farm Biosecurity Plan to be assured that your Biosecurity Plan for Johnes Disease minimises the risk of infection of your herd with Johnes Disease.



## Do you have a Farm Biosecurity Plan?

### Biosecurity focus - the way of the future for livestock producers

- The voluntary Johne's Beef Assurance Score (J-BAS) has been developed to assist beef cattle producers in identifying the risk of Johne's disease (JD) occurring in a herd.
- Transitional arrangements for J-BAS end on 30 July 2017 and cattle producers across Australia are urged to implement an on-farm biosecurity plan in order to maintain their current J-BAS. J-BAS is managed by Animal Health Australia (AHA) on behalf of the Cattle Council of Australia (CCA), who represent the industry.
- In an important update for producers, herds with a transition score of J-BAS 7 or 8 will revert to a J-BAS 6, if no on-farm biosecurity plan is in place by 30 October 2017.
- "CCA have taken on-board feedback and altered the J-BAS score to alleviate producer concerns regarding loss of domestic market sales. This doesn't change the focus of the new direction – cattle producers are still encouraged to treat JD as one of the many diseases they must manage within their business," says Dr Rob Barwell, Acting Executive Manager Biosecurity and Product Integrity Services at AHA.
- "We'd like to acknowledge all livestock stakeholders, including agents, for their excellent work in spreading the on-farm biosecurity message to Australian cattle producers – a message we're keen for all invested parties to continue sharing.
- "It's important to remember that key to this new framework is the implementation of robust biosecurity practices; practices which will safeguard the profitability of the cattle producer," says Dr Barwell.
- To assist producers with developing their biosecurity plans, AHA has updated its [Farm Biosecurity Plan page](#) to include a range of biosecurity planning resources. The same on-farm planning template can be used for the Livestock Production Assurance program and J-BAS, with producers who have a JD focus required to complete the optional JD questions.
- As the Australian cattle industry finalises the transition to a new framework for managing JD, producers are encouraged to implement their on-farm biosecurity plans.

-----  
Further information can be found –

- Animal Health Australia - <https://www.animalhealthaustralia.com.au/news/everything-need-know-jd-cattle/>
- Queensland Government On-Farm Biosecurity - <https://www.daf.qld.gov.au/animal-industries/animal-health-and-diseases/protect-your-animals/property-biosecurity>
- Farm Biosecurity - <http://www.farmbiosecurity.com.au/>

N.B – The updated 'NATIONAL CATTLE HEALTH DECLARATION' form with the instructions is now on the ALCA website in FORMS & DOWNLOADS





## It's Showtime in Queensland

### Ridgeland's Show



Lowline youth participants at Ridgeland's Show



The Beck boys



### Yeppoon Show



Sharon Coome, Crimson Park Lowlines, & Ayden Barton-Barnes with Allambie Gladys and calf who won Grand Champion Compact Breed



## 2017 Rockhampton Show, Qld



Lowlines on parade at Rocky Show

Rockhampton Show was well supported by Lowline breeders, with 6 studs exhibiting over 30 head of cattle. There was a real spirit of cooperation – from borrowing clippers and hoses to helping each other out cleaning and feeding and maintaining cattle – and that huge clean up job, everyone worked together! And what a great group of youngsters we have, helping each other, giving advice and sharing experiences and success! The future looks very bright...

### **Results:**

#### **Female under 9mths**

- 1st Crimson Park Megan – Crimson Park Lowlines
- 2nd Desire Red Malia – Rock.Girls Grammar Sch (RGGS)

#### **Female 12months & under 15 months**

- 1st Timitch Hill Mahalia – Timitch Hill Enterprises
- 2nd M&M Meredith – Brandon Beck

#### **Champion Female Calf Compact Breed**

Crimson Park Megan – Crimson Park Lowlines

#### **Reserve Champion Calf Compact Breed**

Desire Red Malia – RGGS

#### **Bull 9mth & under 12 months**

- 1st Langley Park Mr Mick Maverick – Brandon Beck
- 2nd Timitch Hill Mac – Timitch Hill Enterprises

#### **Bull 12 months & under 15 months**

- 1st McIntosh Creek Mondaroo – RGGS

#### **Champion Male Calf Compact Breeds**

Langley Park Mr Mick Maverick

#### **Reserve Champion Calf Compact Breeds**

McIntosh Creek Mondaroo

#### **Female 15mths & under 17 mths**

- 1st McIntosh Creek Mystery Girl – RGGS
- 2nd Gigi Maybe Midnight – RGGS
- 3rd Whispers Gria – RGGS
- 4th Desire Red Mini – RGGS

#### **Female 19mths & under 21 months**

- 1st Crimson Park Legacy – Crimson Park Lowlines
- 2nd Crimson Park Luana – Crimson Park Lowlines
- 3rd Timitch Hill Lazuli – Timitch Hill Enterprises





## Rockhampton show cont.

### **Champion Female Junior Compact Breeds**

Crimson Park Legacy

### **Reserve Champion Female Junior**

McIntosh Creek Mystery Girl

### **Bull 15mths & under 17 months**

1st Serena Downs Merlin the Magician – Crimson Park

### **Champion Junior Male Compact Breeds**

Serena Downs Merlin the Magician

### **Female 24months & under 39 months**

1st Gigi Lilac shown by RGGS

2nd Crimson Park Kaye – Brandon Beck

3rd Whitby Farm Heidi – RGGS

### **Female 30 months & older**

1st Allambie Gladys – Crimson Park Lowlines

2nd Crimson Park Krystal – Crimson Park Lowlines

3rd Serena Downs Hannah Lilly – Brandon Beck

### **Champion Senior Female Compact Breeds**

Gigi Lilac

### **Reserve Champion Calf Compact Breeds**

Allambie Gladys

### **Bull 30 months & older**

1st Crimson Park Keigh – Crimson Park Lowlines

2nd Crimson Park Justajolly – Crimson Park Lowlines

3rd Crimson Park Krypton – Crimson Park Lowlines

4th Timitch Hill Khaleesi – Timitch Hill Enterprises



### **Champion Senior Bull Compact Breeds**

Crimson Park Keigh

### **Reserve Champion Bull Compact Breeds**

Crimson Park Justajolly

### **Grand Champion Female Compact Breeds**

Crimson Park Magic Megan – Crimson Park

### **Grand Champion Male Compact Breeds**

Crimson Park Keigh

### **Breeders Group**

Crimson Park Lowlines

### **Sires Progeny**

Timitch Hill with Timitch Hill Alexander

### **Dams Progeny**

Crimson Park Lowlines with Tanview Grace



## Reminder for all show entries -

**Members who wish to show animals in any up-and-coming Royal Shows, please have the animals DNA'd & Registered in plenty of time before the event, to avoid any problems and disappointment.**

**All entries need to be fully registered to be entered.**

## Other requirements -

- **All exhibits & calves to be Pestivirus tested**
- **All exhibits must come from a property with a J-BAS of 6, 7 or 8**

## 2017 Royal Melbourne Show Entries are Open



2017 Royal Melbourne Show entries are now open. Lowline cattle will be exhibited from 28<sup>th</sup> September to 3<sup>rd</sup> October 2017. Come along & join in!

Lowline judging will be on Sunday 1<sup>st</sup> October 2017 at 9am.

**Entries Close: Friday 28 July 2017**

For further information, catalogues & forms:  
[http://rasv.com.au/Events/RMS\\_Home/RMS\\_Bee\\_fCattle\\_Home/RMS\\_Bee\\_fCattle\\_Entries/RMS\\_Bee\\_fCattle\\_Schedules-Forms/](http://rasv.com.au/Events/RMS_Home/RMS_Bee_fCattle_Home/RMS_Bee_fCattle_Entries/RMS_Bee_fCattle_Schedules-Forms/)

## 2017 Toogoolawah Show, Qld

Toogoolawah Show saw 40 Lowlines exhibited by 9 studs – Pittsworth State High School, Dakabin State High School, Lockyer District High School, Ebony Lowlines, SarahLea Lowlines, Lik Lik Lowlines, Sunrise Lowlines, Tanview Lowlines & Vern Park Lowlines

The lowlines were judged as a combined Small Breed Competition by Judge, Mr Ben Drain.

### Results as follows:

Class 1: Bull 6mths & Under 12mths

1st – Pittsworth Model

2nd – Lik Lik Maximus

Class 2: Bull 12mths & Under 16mths

1st Tanview Master

2nd Dakabin Max

3rd Loc-Hi Marvellous Hero

**Junior Champion Bull:** Pittsworth Model

**Reserve Junior Champion Bull:** Tanview Master

Class 4: Bull 20mths & Under 24mths

1st – Lik Lik Legend

3rd – Dakabin Lester

Class 5: Bull 24mths & Under 30mths

1st Tanview Kingdom

Class 6: Bull 30mths & Over

1st Tanview Jaguar – Jamie Smith (Vern Park Lowlines)

2nd Tanview Jackaroo

3rd Dakabin Keith

**Senior Champion Bull:** Tanview Jaguar – Jamie Smith (Vern Park Lowlines)

**Reserve Senior Champion Bull:** Tanview Jackaroo

**Grand Champion Bull:** Tanview Jaguar – Jamie Smith (Vern Park Lowlines)



## Toogoolawah Show results..cont

### Class 7: Heifer 6mths & Under 12mths

- 1st Lik Lik Midori
- 2nd Sunrise Milan – Christina Schiller (Sunrise Lowlines)
- 3rd Pittsworth Modem
- 4th Lik Lik Majestic

### Class 8: Heifer 12mths & Under 16mths

- 1st Tanview Matilda
- 2nd Dakabin Molly
- 3rd Dakabin Madisyn

### Class 9 Heifer 16mths and Under 20mths

- 1st Tanview Lovebird
- 2nd Lik Lik Lunar (AI) (ET)
- 3rd Lik Lik Mia

**Junior Champion Female:** Tanview Matilda

**Reserve Junior Champion Female:**

Lik Lik Midori

### Class 10: Heifer 20mths & Under 24mths

- 1st Loc-Hi Liberty
- 2nd Lik Lik Liberty
- 3rd Lik Lik Lotus

### Class 11: Cow 24mths & Under 30mths

- 1st Dakabin Lucy
- 2nd Dakabin Katrina
- 3rd Tanview Lorikeet

### Class 12: Cow 30mths & Over

- 1st Loc-Hi Gravity
- 2nd Dakabin Infinity
- 3rd Loc-Hi Jordie

**Senior Champion Female:** Loc-Hi Gravity

**Reserve Senior Champion Female:**

Dakabin Infinity

**Grand Champion Female:** Loc-Hi Gravity

### Interbreed British Exhibitors Group

- 1st Tanview Lowlines
- 2nd Lik Lik Lowlines

Christina Schiller, Sunrise Lowlines

## Pioneer Valley Show, Qld



Cloudbreak Magneto – Reserve Champion Bull in the All-Breeds Competition at Pioneer valley Show



(Above) Three Lowline exhibits at Pioneer Valley Show – Cloudbreak Magneto, Cloudbreak Lilac & Roulette Red Delight



Lik Lik Luna at Toogoolawah Show



## ALCA Facebook Features

August 2017 marks the 25<sup>th</sup> Anniversary of the formation of the Australian Lowline Cattle Association and to mark this momentous occasion a commemorative book will be published later this year.

To help celebrate ALCA's 25<sup>th</sup> year, we have a few new segments coming to the ALCA Face Book Page.

The first is "**Meet The Breeder**" featured on Fridays. So if you happen to receive an email with a questionnaire attached, well don't be alarmed, but get excited ! It's a wonderful opportunity to not only showcase your own stud and involvement with the breed but to also network both within the ALCA community and around the world! Now that's got to be good !

Starting next Sunday will be "**Sales Sunday**". There's a few rules to this one though!



We will be linking to the **Saleyards** page on the website. Also, you the breeder, will have this **one day** in which you can post either a link to your own website where you have stock listed for sale or in the comments section you may write a few words about the animal you have for sale.

So now for the rules :

1. It will only be on Sunday. Posts added on any other day will not be accepted.
2. It's only for ALCA registered stock – please add relevant information to your post (Reg. Number)
3. Have fun doing it !



## Beware - Grass Tetany

Like it or not, winter is here and there are a few things we need to do to keep our cattle comfortable and healthy for the next few months.

For those who calve in Autumn/Winter, remember that cows need good feed to keep up a milk supply. During cold weather available dry feed (hay) is even more important so the cows can keep themselves warm as well as produce enough milk for their growing calves. Breeding cows need to maintain reasonable body condition so they can get back into calf and maintain a pregnancy, as well as feed a calf.

In the southern states of Australia, Grass Tetany is a problem some farmers will face when the weather is continuously cold & available pasture is short and green.

Although low blood magnesium levels (hypomagnesaemia) are always involved with Grass Tetany, the disorder is complex and can occur under a variety of circumstances. Low levels of blood magnesium are usually associated with low levels of blood calcium in late pregnant cows and cows with calves at foot. These low levels mean that the muscles of the body cannot work properly, so the animal dies as it cannot breathe.

Feeding hay and having magnesium lick blocks can help avoid this.

A more informative explanation about Grass Tetany can be found in HERD HEALTH of the ALCA website.





## Triplet bull calves born in Illowa, Vic.



Illowa Poll Hereford breeder Clinton Baulch has had good luck come in threes with a rare birth of triplet calves at his property.

Mr Baulch, who established Jaclinton Poll Herefords in 2008, said all of the triplet calves were bulls, which he understood was about a one in 400,000 chance.

He said the cow delivered the triplets with a natural birth and he found them soon after they had been born.

He said the cow had been artificially inseminated and then later serviced by the bull Kerlson Pines Highway.

He was inclined to believe the natural service had been the one that led to the triplet's conception.

"There are three different ones. There is a small one, a medium one and a bigger one," Mr Baulch said.

He said the same cow had twins two years ago.

Mr Baulch said he hoped to rear the calves to reach good condition and one day take them to the Australian Hereford Show and Sale at Wodonga.

Mr Baulch enjoyed success at this year's national Hereford sale at Wodonga, selling six bulls for an average price of \$6000 with a top of \$10,000.

By Everard Himmelreich  
The Land newspaper 18 May 2017

## Certified Lowline Beef Poster

This poster has been designed after requests from CLB producers for use in promotion in butcher's shops – or at any other events – promoting CLB to consumers. It will be available to those that have signed the CLB Producer's Agreement by contacting Carole, the ALCA Executive Officer and will be sent via email to be printed by the producer to the size that they require.

It is a high resolution image and will be able to be printed poster size.

There is a complementary series of DL brochures also being developed, with space for producer details, that will be given to consumers and feature a variety of recipes. So if you have an amazing recipe for Lowline beef and would like to share, please send them in!

Both these publications are for ALCA members, by ALCA members, to support you in promoting your wonderful Certified Lowline Beef products.

Many thanks to Sandra Price for her many hours of work on both these publications – and her tolerant and supportive family!

Please contact Carole if you would like a copy or have any queries!

More news on the brochures and other CLB developments coming soon .....

