

What is a Lowline?

..... A true Aberdeen Angus

2015 ALCA Journal

Australian Lowlines are one of the few breeds that retain pure genetics from the original herds in the countries of origin. This is something UNIQUE in the beef world today but with changing climate, producers wanting efficiency and consumers preferring healthy living, these original genetics tick all the boxes.

When the NSW Department of Agriculture purchased cattle for their Trangie Agricultural Experimental Farm they chose a shipment of top stud Aberdeen Angus from the Glencarnock Estate of Mr James Duncan McGregor at Brandon, Manitoba, Canada, comprised of the 1927 Glencarnock show team, including 2 bulls, a cow and calf, and 17 heifers.

The cattle embarked on the steam ship 'Huraki' in December 1928 making it the first shipment of any cattle breed from Canada to Australia. After their arrival, the 'show team' was paraded at the 1929 Sydney Royal Show & later at the Melbourne and Brisbane Royal Shows



Figure 1: 1929 Glencarnock Revolution 6th

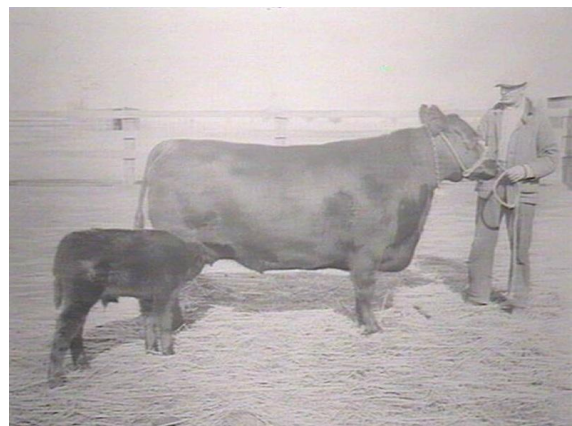


Figure 2: Blackcap Bixie 2nd with calf Glencarnock Blackcap Eric

These females belonged to the fashionable Angus families – Blackbirds, Blackcaps, Elba Ericas, Miss Burgess, Elsa Ericas, Enchantress Ericas, Georginas and several more lines from leading genetic families of the day. The bulls, Glencarnock Revolution 6th and Brave Edward Glencarnock were progeny of the great sires Blackcap Revolution & Edward Glencarnock. Further bulls were imported as sires in 1936, 1941 and a Scottish sire, Pro Ben of Balfron was introduced in 1956. These Aberdeen Angus were to be the forebears of our Australian Lowline cattle of today.

In 1993, Greg Rhodes, together with his brother, Peter, formed Broken Arrow Lowline Stud after the purchase of Lowline stock from Trangie. As Broken Arrow Genetics, using their Broken Arrow Lowlines and Bell Brae Lowlines owned by Harry Weaver, their idea was to produce a replica of the world's most efficient cow, Erica 843, with their ultimate objective to see if the Erica Angus-type genetics for high milk producing, easy doing animals had a positive impact on the modern beef raising practices and on the environment.

What is a Lowline?

..... A true Aberdeen Angus



Figure 3: Broken Arrow Diamond Princess 1



Figure 4: Broken Arrow Kaptain Midnight

In 1995, Broken Arrow Stud produced *Broken Arrow Kaptain Midnight* - a line-bred Erica Lowline Angus bull, whose pedigree contained at least 7001 unique identified animals and with Erica 843 appearing thousands of times.

Kaptain Midnight won broad ribbons at Sydney, Canberra and Melbourne Royal Shows and has produced award winning progeny.

Sadly, Greg Rhodes passed away in 2013 after a long illness but his theories, facts and figures regarding the results from the Trangie research and his own research can be found online at **The Linebred Erica (TM) website – Re-Creating Erica.**

Over the years they also produced a newsletter called **Lowline:Online** where subscribers could read about the history of the Angus/Lowline breed with interesting anecdotes, facts and much useful information. Greg Rhodes was a man with exceptional genetic knowledge and his expertise about the world of the Ericas and Angus will be missed but he leaves a legacy of his research for future Lowline enthusiasts.

The fact that our Lowline cattle are DNA typed and Parent verified before registration and our closed Herd Book has resulted in a line of pure Aberdeen Angus cattle now named '**Australian Lowline**'. They can be traced back to the origins of the breed in Canada and Scotland – a fact UNIQUE in the cattle world of breed improvement by 'breeding up' and 'genetic infusion'.

Next time you are asked 'What is a Lowline?' you can reply that they are pure original Aberdeen Angus genetics and 'More Angus than most Angus'.

So if you want a unique, medium framed, docile, easily managed heritage breed – buy registered Australian Lowline Cattle - you know exactly what you are buying.

Julie Knight
Wanamara Lowlines
Major Plains, Vic.